

## Product datasheet

### Anti-Syndecan-1 antibody [B-A38] ab34164

★★★★★ [10 Abreviews](#) [49 References](#) [1 Image](#)

#### Overview

<b>Product name</b>	Anti-Syndecan-1 antibody [B-A38]
<b>Description</b>	Mouse monoclonal [B-A38] to Syndecan-1
<b>Host species</b>	Mouse
<b>Tested applications</b>	<b>Suitable for:</b> Flow Cyt
<b>Species reactivity</b>	<b>Reacts with:</b> Human
<b>Immunogen</b>	Tissue, cells or virus corresponding to Syndecan-1. U266 cell line.
<b>Positive control</b>	Bone Marrow
<b>General notes</b>	<p>This antibody stains all plasma cells and plasma cell lines. No staining of other leucocytes is seen in peripheral blood or bone marrow, although some ALL cell lines express the antigen weakly. Some staining of epithelial and endothelial cells may be seen in immunohistology.</p> <p>The Life Science industry has been in the grips of a reproducibility crisis for a number of years. Abcam is leading the way in addressing this with our range of recombinant monoclonal antibodies and knockout edited cell lines for gold-standard validation. Please check that this product meets your needs before purchasing.</p> <p>If you have any questions, special requirements or concerns, please send us an inquiry and/or contact our Support team ahead of purchase. Recommended alternatives for this product can be found below, along with publications, customer reviews and Q&amp;As</p>

#### Properties

<b>Form</b>	Liquid
<b>Storage instructions</b>	Shipped at 4°C. Store at +4°C short term (1-2 weeks). Upon delivery aliquot. Store at -20°C long term. Avoid freeze / thaw cycle.
<b>Storage buffer</b>	Preservative: 0.09% Sodium azide Constituents: PBS, 1% BSA
<b>Purity</b>	Ion Exchange Chromatography
<b>Purification notes</b>	Purified IgG prepared by ion exchange chromatography
<b>Primary antibody notes</b>	This antibody stains all plasma cells and plasma cell lines. No staining of other leucocytes is seen in peripheral blood or bone marrow, although some ALL cell lines express the antigen weakly. Some staining of epithelial and endothelial cells may be seen in immunohistology.

<b>Clonality</b>	Monoclonal
<b>Clone number</b>	B-A38
<b>Myeloma</b>	x63-Ag8.653
<b>Isotype</b>	IgG1

## Applications

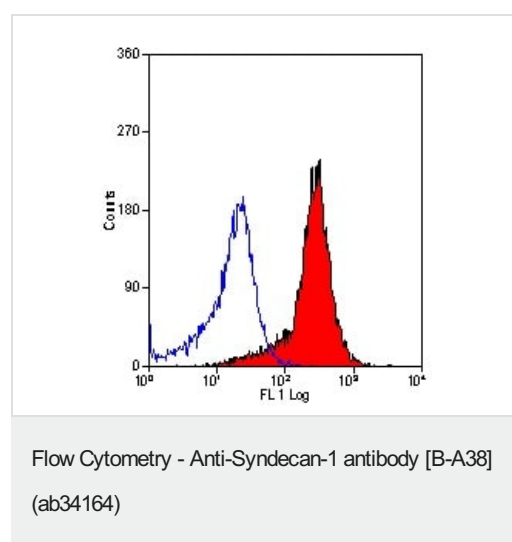
**The Abpromise guarantee** Our **Abpromise guarantee** covers the use of ab34164 in the following tested applications. The application notes include recommended starting dilutions; optimal dilutions/concentrations should be determined by the end user.

Application	Abreviews	Notes
Flow Cyt		Use 10µl for 10 <sup>6</sup> cells. <b>ab170190</b> - Mouse monoclonal IgG1, is suitable for use as an isotype control with this antibody.

## Target

<b>Function</b>	Cell surface proteoglycan that bears both heparan sulfate and chondroitin sulfate and that links the cytoskeleton to the interstitial matrix.
<b>Sequence similarities</b>	Belongs to the syndecan proteoglycan family.
<b>Cellular localization</b>	Membrane.

## Images



Flow cytometry analysis of U266 cell line using ab34164

**Please note:** All products are "FOR RESEARCH USE ONLY. NOT FOR USE IN DIAGNOSTIC PROCEDURES"

**Our Abpromise to you: Quality guaranteed and expert technical support**

- Replacement or refund for products not performing as stated on the datasheet
- Valid for 12 months from date of delivery
- Response to your inquiry within 24 hours
- We provide support in Chinese, English, French, German, Japanese and Spanish
- Extensive multi-media technical resources to help you
- We investigate all quality concerns to ensure our products perform to the highest standards

If the product does not perform as described on this datasheet, we will offer a refund or replacement. For full details of the Abpromise, please visit <https://www.abcam.com/abpromise> or contact our technical team.

#### **Terms and conditions**

---

- Guarantee only valid for products bought direct from Abcam or one of our authorized distributors