


Anti-Syndecan 4 antibody ab74139

[6 References](#) [3 Images](#)

Overview

Product name	Anti-Syndecan 4 antibody
Description	Rabbit polyclonal to Syndecan 4
Host species	Rabbit
Tested applications	Suitable for: ELISA, WB, IHC-P, ICC/IF
Species reactivity	Reacts with: Human Predicted to work with: Mouse, Rat 
Immunogen	Synthetic non-phosphopeptide from human Syndecan 4 around the phosphorylation site of serine 179 (E-G-S ^P -Y-D).
Positive control	Human brain tissue. Extracts from HepG2 cells. HeLa cells.
General notes	<p>The Life Science industry has been in the grips of a reproducibility crisis for a number of years. Abcam is leading the way in addressing this with our range of recombinant monoclonal antibodies and knockout edited cell lines for gold-standard validation. Please check that this product meets your needs before purchasing.</p> <p>If you have any questions, special requirements or concerns, please send us an inquiry and/or contact our Support team ahead of purchase. Recommended alternatives for this product can be found below, along with publications, customer reviews and Q&As</p>

Properties

Form	Liquid
Storage instructions	Shipped at 4°C. Store at -20°C. Stable for 12 months at -20°C.
Storage buffer	<p>pH: 7.40</p> <p>Preservative: 0.02% Sodium azide</p> <p>Constituents: 50% Glycerol (glycerin, glycerine), 0.87% Sodium chloride, PBS</p> <p>Without Mg²⁺ and Ca²⁺</p>
Purity	Immunogen affinity purified
Clonality	Polyclonal
Isotype	IgG

Applications

The Abpromise guarantee

Our **Abpromise guarantee** covers the use of ab74139 in the following tested applications.

The application notes include recommended starting dilutions; optimal dilutions/concentrations should be determined by the end user.

Application	Abreviews	Notes
ELISA		Use at an assay dependent concentration.
WB		1/500 - 1/1000. Detects a band of approximately 22 kDa (predicted molecular weight: 22 kDa).
IHC-P		1/50 - 1/100.
ICC/IF		1/500 - 1/1000.

Target

Function

Cell surface proteoglycan that bears heparan sulfate.

Tissue specificity

Expressed in epithelial and fibroblastic cells.

Sequence similarities

Belongs to the syndecan proteoglycan family.

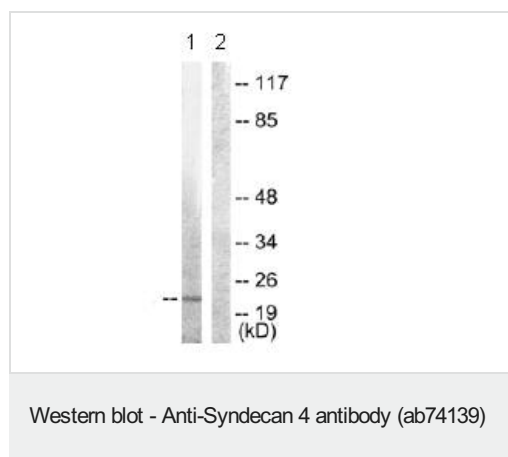
Post-translational modifications

Shedding is enhanced by a number of factors such as heparanase, thrombin or EGF. Also by stress and wound healing. PMA-mediated shedding is inhibited by TIMP3.

Cellular localization

Membrane. Secreted. Shedding of the ectodomain produces a soluble form.

Images



All lanes : Anti-Syndecan 4 antibody (ab74139) at 1/500 dilution

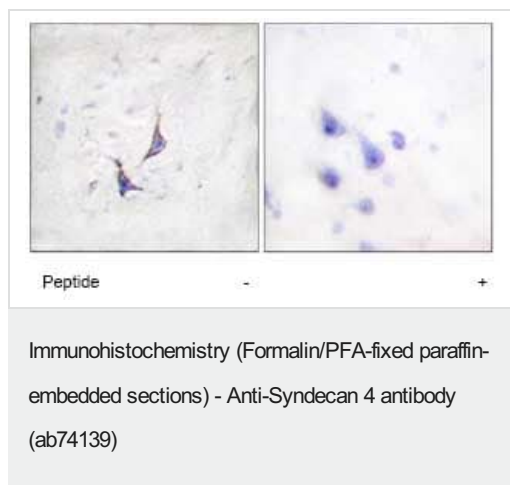
Lane 1 : Extracts from HepG2 cells

Lane 2 : Extracts from HepG2 cells with immunising peptide at 5 µg

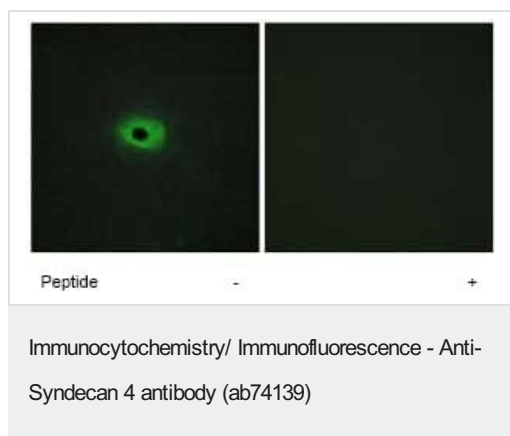
Lysates/proteins at 5 µg per lane.

Predicted band size: 22 kDa

Observed band size: 22 kDa



Immunohistochemistry analysis of human brain tissue using ab74139, at 1/50 dilution, in the presence (right panel) or absence (left panel) of immunising peptide.



Immunofluorescence analysis of HeLa cells using ab74139, at 1/500 dilution, in the presence (right panel) or absence (left panel) of immunising peptide.

Please note: All products are "FOR RESEARCH USE ONLY. NOT FOR USE IN DIAGNOSTIC PROCEDURES"

Our Abpromise to you: Quality guaranteed and expert technical support

- Replacement or refund for products not performing as stated on the datasheet
- Valid for 12 months from date of delivery
- Response to your inquiry within 24 hours
- We provide support in Chinese, English, French, German, Japanese and Spanish
- Extensive multi-media technical resources to help you
- We investigate all quality concerns to ensure our products perform to the highest standards

If the product does not perform as described on this datasheet, we will offer a refund or replacement. For full details of the Abpromise, please visit <https://www.abcam.com/abpromise> or contact our technical team.

Terms and conditions

-
- Guarantee only valid for products bought direct from Abcam or one of our authorized distributors