



Anti-Synphilin 1 antibody ab6179

[3 References](#) [1 Image](#)

Overview

Product name	Anti-Synphilin 1 antibody
Description	Rabbit polyclonal to Synphilin 1
Host species	Rabbit
Specificity	Immunohistochemical analysis of human brain indicates a high level of specificity for this antiserum. Cross reactivity: This antibody is known to react with rat and human. Cross reactivity with other species has not been tested yet.
Tested applications	Suitable for: IHC-P
Species reactivity	Reacts with: Rat
Immunogen	Synthetic peptide: CASKGKNKAA conjugated to KLH by a Glutaraldehyde linker, corresponding to amino acids 911-919 of Human Synphilin 1. <div>  Run BLAST with  Run BLAST with </div>
General notes	<p>This antibody stains Lewy bodies in Dorsal raphe nucleus of Parkinson's diseased human brain.</p> <p>The Life Science industry has been in the grips of a reproducibility crisis for a number of years. Abcam is leading the way in addressing this with our range of recombinant monoclonal antibodies and knockout edited cell lines for gold-standard validation. Please check that this product meets your needs before purchasing.</p> <p>If you have any questions, special requirements or concerns, please send us an inquiry and/or contact our Support team ahead of purchase. Recommended alternatives for this product can be found below, along with publications, customer reviews and Q&As</p>

Properties

Form	Liquid
Storage instructions	Shipped at 4°C. Store at +4°C short term (1-2 weeks). Add glycerol to a final volume of 50% for extra stability and aliquot. Store at -20°C or -80°C. Avoid freeze / thaw cycle.
Storage buffer	pH: 7
Purity	Whole antiserum
Clonality	Polyclonal

Isotype

IgG

Applications

The Abpromise guarantee

Our **Abpromise guarantee** covers the use of ab6179 in the following tested applications.

The application notes include recommended starting dilutions; optimal dilutions/concentrations should be determined by the end user.

Application	Abreviews	Notes
IHC-P		Use at an assay dependent concentration.

Target

Function

Isoform 2 inhibits the ubiquitin ligase activity of SIAH1 and inhibits proteasomal degradation of target proteins. Isoform 2 inhibits autoubiquitination and proteasomal degradation of SIAH1, and thereby increases cellular levels of SIAH. Isoform 2 modulates SNCA monoubiquitination by SIAH1.

Tissue specificity

Detected in brain (at protein level). Widely expressed, with highest levels in brain, heart and placenta.

Involvement in disease

Parkinson disease

Sequence similarities

Contains 6 ANK repeats.

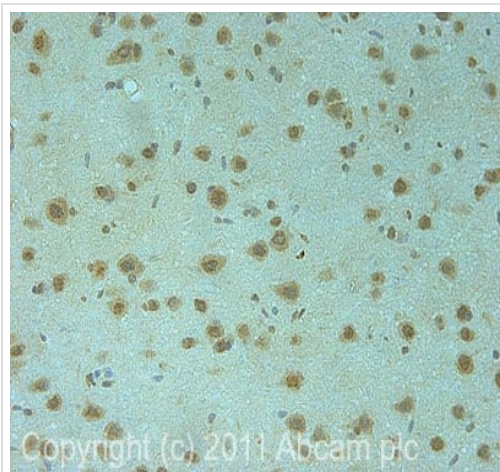
Post-translational modifications

Ubiquitinated; mediated by SIAH1, SIAH2 or RNF19A and leading to its subsequent proteasomal degradation. In the absence of proteasomal degradation, ubiquitinated SNCAIP accumulates in cytoplasmic inclusion bodies. Isoform 2 is subject to limited ubiquitination that does not lead to proteasomal degradation.

Cellular localization

Cytoplasm. Detected in cytoplasmic inclusion bodies, together with SNCA.

Images



Immunohistochemistry (Formalin/PFA-fixed paraffin-embedded sections) - Anti-Synphilin 1 antibody (ab6179)

IHC image of ab6179 staining in rat normal brain formalin fixed paraffin embedded tissue section, performed on a Leica Bond™ system using the standard protocol F. The section was pre-treated using heat mediated antigen retrieval with sodium citrate buffer (pH6, epitope retrieval solution 1) for 20 mins. The section was then incubated with ab6179, 5µg/ml, for 15 mins at room temperature and detected using an HRP conjugated compact polymer system. DAB was used as the chromogen. The section was then counterstained with haematoxylin and mounted with DPX.

For other IHC staining systems (automated and non-automated) customers should optimize variable parameters such as antigen retrieval conditions, primary antibody concentration and antibody incubation times.

Please note: All products are "FOR RESEARCH USE ONLY. NOT FOR USE IN DIAGNOSTIC PROCEDURES"

Our Abpromise to you: Quality guaranteed and expert technical support

- Replacement or refund for products not performing as stated on the datasheet
- Valid for 12 months from date of delivery
- Response to your inquiry within 24 hours
- We provide support in Chinese, English, French, German, Japanese and Spanish
- Extensive multi-media technical resources to help you
- We investigate all quality concerns to ensure our products perform to the highest standards

If the product does not perform as described on this datasheet, we will offer a refund or replacement. For full details of the Abpromise, please visit <https://www.abcam.com/abpromise> or contact our technical team.

Terms and conditions

- Guarantee only valid for products bought direct from Abcam or one of our authorized distributors