

Product datasheet

Anti-Syntaxin 6 antibody [3D10] - Golgi Membrane Marker ab12370

★★★★☆ [3 Abreviews](#) [25 References](#) [4 Images](#)

Overview

Product name	Anti-Syntaxin 6 antibody [3D10] - Golgi Membrane Marker
Description	Mouse monoclonal [3D10] to Syntaxin 6 - Golgi Membrane Marker
Host species	Mouse
Tested applications	Suitable for: Flow Cyt, WB, IP
Species reactivity	Reacts with: Mouse, Rat
Immunogen	Recombinant full length protein corresponding to Rat Syntaxin 6. Database link: Q63635
Epitope	The epitope for this antibody has been localized to the amino terminus (residues 1-25) of Syntaxin 6.
Positive control	Mouse Brain Tissue Extract, rat Brain Tissue Extract.
General notes	<p>This product was changed from ascites to tissue culture supernatant on 5th July 2019. Lot numbers higher than GR3173630 are from tissue culture supernatant. Please note that the dilutions may need to be adjusted accordingly. If you have any questions, please do not hesitate to contact our scientific support team.</p> <p>The Life Science industry has been in the grips of a reproducibility crisis for a number of years. Abcam is leading the way in addressing this with our range of recombinant monoclonal antibodies and knockout edited cell lines for gold-standard validation. Please check that this product meets your needs before purchasing.</p> <p>If you have any questions, special requirements or concerns, please send us an inquiry and/or contact our Support team ahead of purchase. Recommended alternatives for this product can be found below, along with publications, customer reviews and Q&As</p>

Properties

Form	Liquid
Storage instructions	Shipped at 4°C. Upon delivery aliquot and store at -20°C. Avoid freeze / thaw cycles.
Storage buffer	Preservative: 0.09% Sodium azide Constituents: PBS, 50% Glycerol (glycerin, glycerine)
Purity	Protein G purified

Purification notes	Purified from TCS
Clonality	Monoclonal
Clone number	3D10
Isotype	IgG1
Light chain type	kappa

Applications

The Abpromise guarantee Our **Abpromise guarantee** covers the use of ab12370 in the following tested applications. The application notes include recommended starting dilutions; optimal dilutions/concentrations should be determined by the end user.

Application	Abreviews	Notes
Flow Cyt		Use 2µg for 10 ⁶ cells. ab170190 - Mouse monoclonal IgG1, is suitable for use as an isotype control with this antibody.
WB	★★★★★ (2)	1/1000. Detects a band of approximately 35 kDa (predicted molecular weight: 30.6 kDa).
IP		Use at an assay dependent concentration.

Target

Function	Involved in intracellular vesicle trafficking.
Sequence similarities	Belongs to the syntaxin family. Contains 1 t-SNARE coiled-coil homology domain.
Post-translational modifications	Phosphorylated upon DNA damage, probably by ATM or ATR.
Cellular localization	Golgi apparatus membrane.

Images



Western blot - Anti-Syntaxin 6 antibody [3D10] - Golgi Membrane Marker (ab12370)

All lanes : Anti-Syntaxin 6 antibody [3D10] - Golgi Membrane

Marker (ab12370) at 1 µg/ml

Lane 1 : Brain (Mouse) Tissue Lysate

Lane 2 : Brain (Rat) Tissue Lysate

Lysates/proteins at 10 µg per lane.

Secondary

All lanes : Goat Anti-Mouse IgG H&L (HRP) preadsorbed

(**ab97040**) at 1/5000 dilution

Developed using the ECL technique.

Performed under reducing conditions.

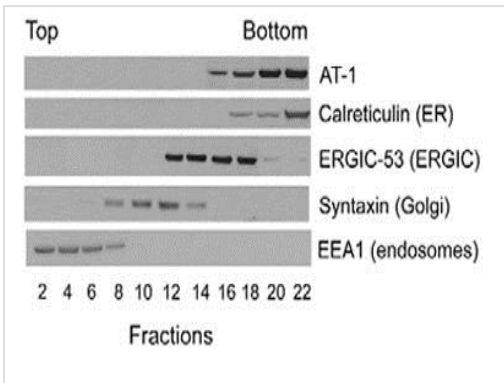
Predicted band size: 30.6 kDa

Observed band size: 30.6 kDa

Additional bands at: 26 kDa. We are unsure as to the identity of these extra bands.

Exposure time: 8 minutes

This image was generated using the ascites version of the product.

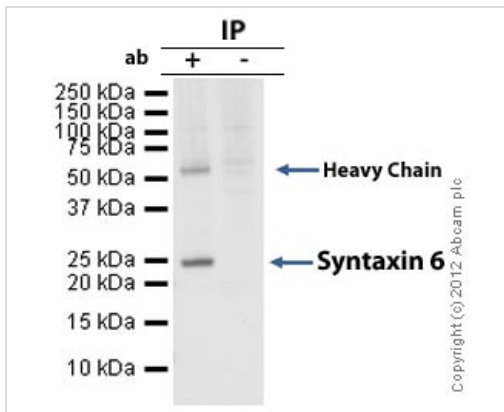


Western blot - Anti-Syntaxin 6 antibody [3D10] - Golgi Membrane Marker (ab12370)

Image from Jonas MC et al, J Cell Sci. 2010 Oct 1;123(Pt 19):3378-88. Epub 2010 Sep 7, Fig 1, doi:10.1242/jcs.068841.

Intracellular membranes from CHO cells were separated on a 10–24% discontinuous Nycodenz gradient. Western Blotting was then performed using a range of antibodies including ab12370 at a 1/1000 dilution. An HRP-conjugated anti-mouse secondary was used at a 1/6000 dilution.

This image was generated using the ascites version of the product.



Immunoprecipitation - Anti-Syntaxin 6 antibody
[3D10] - Golgi Membrane Marker (ab12370)

Syntaxin 6 was immunoprecipitated using 0.5mg Mouse Brain whole tissue lysate, 10µg of Mouse monoclonal to Syntaxin 6 and 50µl of protein G magnetic beads (+). No antibody was added to the control (-).

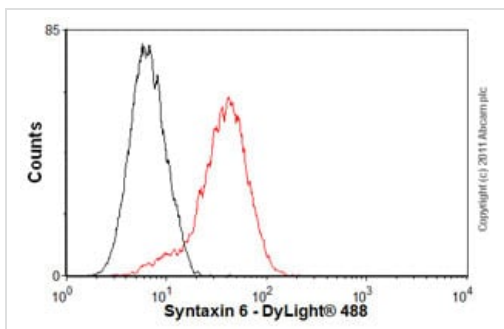
The antibody was incubated under agitation with Protein G beads for 10min, Mouse Brain whole tissue lysate lysate diluted in RIPA buffer was added to each sample and incubated for a further 10min under agitation.

Proteins were eluted by addition of 40µl SDS loading buffer and incubated for 10min at 70°C; 10µl of each sample was separated on a SDS PAGE gel, transferred to a nitrocellulose membrane, blocked with 5% BSA and probed with ab12370.

Secondary: Protein G-HRP at 1/500 dilution.

Band: 25kDa:Syntaxin 6.

This image was generated using the ascites version of the product.



Flow Cytometry - Anti-Syntaxin 6 antibody [3D10] -
Golgi Membrane Marker (ab12370)

Overlay histogram showing PC12 cells stained with ab12370 (red line). The cells were fixed with 4% paraformaldehyde (10 min) and then permeabilized with 0.1% PBS-Tween for 20 min. The cells were then incubated in 1x PBS / 10% normal goat serum / 0.3M glycine to block non-specific protein-protein interactions followed by the antibody (ab12370, 2µg/1x10⁶ cells) for 30 min at 22°C. The secondary antibody used was DyLight® 488 goat anti-mouse IgG (H+L) ([ab96879](#)) at 1/500 dilution for 30 min at 22°C. Isotype control antibody (black line) was mouse IgG1 [ICIGG1]([ab91353](#), 2µg/1x10⁶ cells) used under the same conditions. Acquisition of >5,000 events was performed.

This image was generated using the ascites version of the product.

Please note: All products are "FOR RESEARCH USE ONLY. NOT FOR USE IN DIAGNOSTIC PROCEDURES"

Our Abpromise to you: Quality guaranteed and expert technical support

- Replacement or refund for products not performing as stated on the datasheet
- Valid for 12 months from date of delivery
- Response to your inquiry within 24 hours
- We provide support in Chinese, English, French, German, Japanese and Spanish
- Extensive multi-media technical resources to help you

- We investigate all quality concerns to ensure our products perform to the highest standards

If the product does not perform as described on this datasheet, we will offer a refund or replacement. For full details of the Abpromise, please visit <https://www.abcam.com/abpromise> or contact our technical team.

Terms and conditions

- Guarantee only valid for products bought direct from Abcam or one of our authorized distributors