

Anti-SYTL2/SLP2 antibody ab231133

[1 References](#) [4 Images](#)

Overview

Product name	Anti-SYTL2/SLP2 antibody
Description	Rabbit polyclonal to SYTL2/SLP2
Host species	Rabbit
Tested applications	Suitable for: IHC-P, WB
Species reactivity	Reacts with: Mouse, Human, Pig
Immunogen	Recombinant fragment (His-T7-tag) corresponding to Human SYTL2/SLP2 aa 329-880. Expressed in E.coli. N-terminal tags. Database link: Q9HCH5
Positive control	WB: Recombinant human SYTL2/SLP2; mouse cerebrum tissue lysate; pig cerebrum tissue lysate. IHC-P: Human spleen tissue.
General notes	<p>The Life Science industry has been in the grips of a reproducibility crisis for a number of years. Abcam is leading the way in addressing this with our range of recombinant monoclonal antibodies and knockout edited cell lines for gold-standard validation. Please check that this product meets your needs before purchasing.</p> <p>If you have any questions, special requirements or concerns, please send us an inquiry and/or contact our Support team ahead of purchase. Recommended alternatives for this product can be found below, along with publications, customer reviews and Q&As</p>

Properties

Form	Liquid
Storage instructions	Shipped at 4°C. Store at +4°C short term (1-2 weeks). Upon delivery aliquot. Store at -20°C long term. Avoid freeze / thaw cycle.
Storage buffer	pH: 7.40 Preservative: 0.02% Sodium azide Constituents: 44.12% PBS, 55.77% Glycerol (glycerin, glycerine)
Purity	Protein A purified
Purification notes	Antigen-specific affinity chromatography followed by Protein A affinity chromatography
Clonality	Polyclonal
Isotype	IgG

Applications

The Abpromise guarantee

Our **Abpromise guarantee** covers the use of ab231133 in the following tested applications.

The application notes include recommended starting dilutions; optimal dilutions/concentrations should be determined by the end user.

Application	Abreviews	Notes
IHC-P		Use a concentration of 5 - 20 µg/ml.
WB		Use a concentration of 0.2 - 2 µg/ml.

Target

Function

Isoform 1 acts as a RAB27A effector protein and plays a role in cytotoxic granule exocytosis in lymphocytes. It is required for cytotoxic granule docking at the immunologic synapse. Isoform 4 binds phosphatidylserine (PS) and phosphatidylinositol-4,5-bisphosphate (PIP2) and promotes the recruitment of glucagon-containing granules to the cell membrane in pancreatic alpha cells. Binding to PS is inhibited by Ca(2+) while binding to PIP2 is Ca(2+) insensitive.

Tissue specificity

Isoform 1 is expressed in hematopoietic lineages with a strong expression in CD4 and CD8 T-lymphocytes. It is also widely expressed in nonhematopoietic tissues. Isoform 5 is expressed only in nonhematopoietic tissues. Isoform 4 is expressed in pancreatic alpha cells.

Sequence similarities

Contains 2 C2 domains.
Contains 1 RabBD (Rab-binding) domain.

Domain

The RabBD domain mediates interaction with RAB27A and recruitment on to vesicular structures in cytotoxic T-lymphocytes (CTL).
The C2 1 domain mediates binding to phosphatidylserine (PS) and phosphatidylinositol-4,5-bisphosphate (PIP2) and localization to the cell membrane.

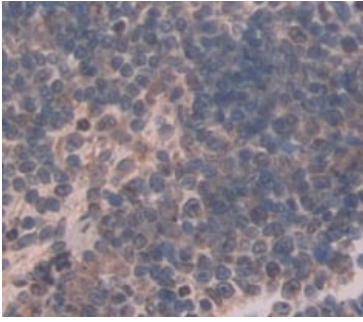
Post-translational modifications

Isoform 1 is highly susceptible to proteolytic degradation and is stabilized by the interaction with RAB27A.

Cellular localization

Cell membrane. In the pancreatic alpha cells distributed in both peripheral and anterior regions. Localizes on the glucagon granules in the cell periphery and Cytoplasm. Cell membrane. Recruited on vesicular structures in cytotoxic T-lymphocytes (CTL) by RAB27A.

Images



Immunohistochemistry (Formalin/PFA-fixed paraffin-embedded sections) - Anti-SYTL2/SLP2 antibody (ab231133)

Formalin-fixed, paraffin-embedded human spleen tissue stained for SYTL2/SLP2 with ab231133 at 20 µg/ml in immunohistochemical analysis. DAB staining.



Western blot - Anti-SYTL2/SLP2 antibody (ab231133)

Anti-SYTL2/SLP2 antibody (ab231133) at 1 µg/ml + Mouse cerebrum tissue lysate

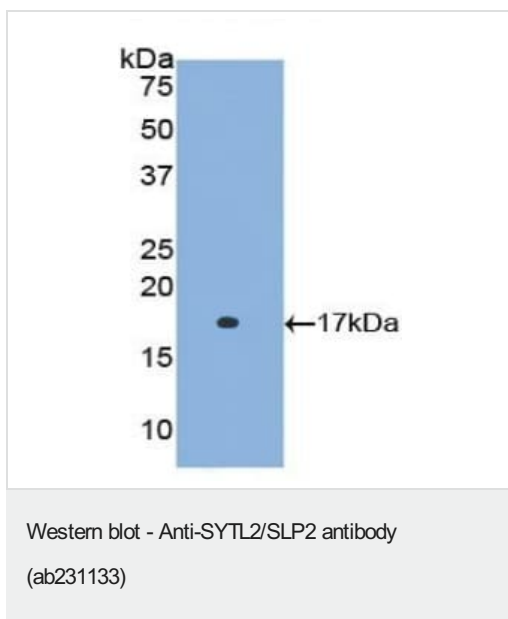
Secondary

HRP-Linked Guinea pig anti-Rabbit at 1/1000 dilution



Western blot - Anti-SYTL2/SLP2 antibody (ab231133)

Anti-SYTL2/SLP2 antibody (ab231133) at 2 µg/ml + Pig cerebrum tissue lysate



Anti-SYTL2/SLP2 antibody (ab231133) at 2 µg/ml + Recombinant human SYTL2/SLP2

Please note: All products are "FOR RESEARCH USE ONLY. NOT FOR USE IN DIAGNOSTIC PROCEDURES"

Our Abpromise to you: Quality guaranteed and expert technical support

- Replacement or refund for products not performing as stated on the datasheet
- Valid for 12 months from date of delivery
- Response to your inquiry within 24 hours
- We provide support in Chinese, English, French, German, Japanese and Spanish
- Extensive multi-media technical resources to help you
- We investigate all quality concerns to ensure our products perform to the highest standards

If the product does not perform as described on this datasheet, we will offer a refund or replacement. For full details of the Abpromise, please visit <https://www.abcam.com/abpromise> or contact our technical team.

Terms and conditions

- Guarantee only valid for products bought direct from Abcam or one of our authorized distributors