

### Anti-T-bet / Tbx21 antibody ab53174

[2 References](#) [2 Images](#)

#### Overview

<b>Product name</b>	Anti-T-bet / Tbx21 antibody
<b>Description</b>	Rabbit polyclonal to T-bet / Tbx21
<b>Host species</b>	Rabbit
<b>Tested applications</b>	<b>Suitable for:</b> IP, WB
<b>Species reactivity</b>	<b>Reacts with:</b> Mouse, Human
<b>Immunogen</b>	Synthetic peptide conjugated to KLH derived from within residues 200 - 300 of Human T-bet/Tbx21. Read Abcam's proprietary immunogen policy (Peptide available as <a href="#">ab69655</a> .)
<b>Positive control</b>	This antibody gave a positive signal in the following lysates: Jurkat Whole Cell, Jurkat Nuclear, Jurkat Whole Cell - Staurosporine Treated (24hr, 500nM), E14Tg2a Whole Cell
<b>General notes</b>	<p>The Life Science industry has been in the grips of a reproducibility crisis for a number of years. Abcam is leading the way in addressing this with our range of recombinant monoclonal antibodies and knockout edited cell lines for gold-standard validation. Please check that this product meets your needs before purchasing.</p> <p>If you have any questions, special requirements or concerns, please send us an inquiry and/or contact our Support team ahead of purchase. Recommended alternatives for this product can be found below, along with publications, customer reviews and Q&amp;As</p>

#### Properties

<b>Form</b>	Liquid
<b>Storage instructions</b>	Shipped at 4°C. Store at +4°C short term (1-2 weeks). Upon delivery aliquot. Store at -20°C or -80°C. Avoid freeze / thaw cycle.
<b>Storage buffer</b>	<p>pH: 7.40</p> <p>Preservative: 0.02% Sodium azide</p> <p>Constituent: PBS</p> <p>Batches of this product that have a concentration &lt; 1mg/ml may have BSA added as a stabilising agent. If you would like information about the formulation of a specific lot, please contact our scientific support team who will be happy to help.</p>
<b>Purity</b>	Immunogen affinity purified
<b>Clonality</b>	Polyclonal

Isotype

IgG

## Applications

### The Abpromise guarantee

Our **Abpromise guarantee** covers the use of ab53174 in the following tested applications.

The application notes include recommended starting dilutions; optimal dilutions/concentrations should be determined by the end user.

Application	Abreviews	Notes
IP		Use a concentration of 5 µg/ml.
WB		Use a concentration of 1 µg/ml. Detects a band of approximately 53 kDa (predicted molecular weight: 58 kDa).

## Target

### Function

Transcription factor that controls the expression of the TH1 cytokine, interferon-gamma. Initiates TH1 lineage development from naive TH precursor cells both by activating TH1 genetic programs and by repressing the opposing TH2 programs.

### Tissue specificity

T-cell specific.

### Involvement in disease

Genetic variations in TBX21 are associated with susceptibility to asthma with nasal polyps and aspirin intolerance (ANPAI) [MIM:208550]. A condition consisting of asthma, aspirin sensitivity and nasal polyposis. Nasal polyposis is due to chronic inflammation of the paranasal sinus mucosa, leading to protrusion of edematous polyps into the nasal cavities.

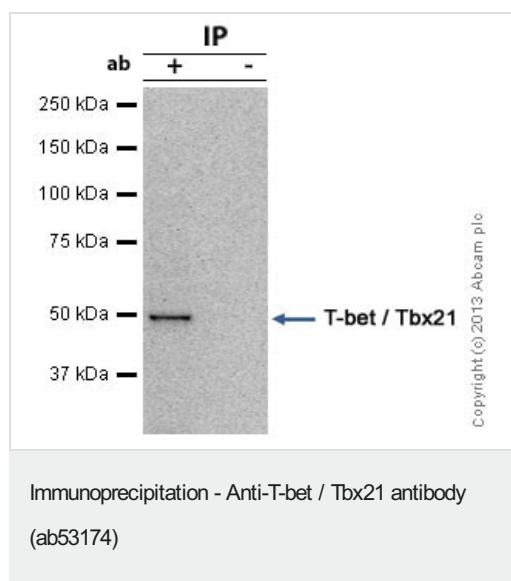
### Sequence similarities

Contains 1 T-box DNA-binding domain.

### Cellular localization

Nucleus.

## Images



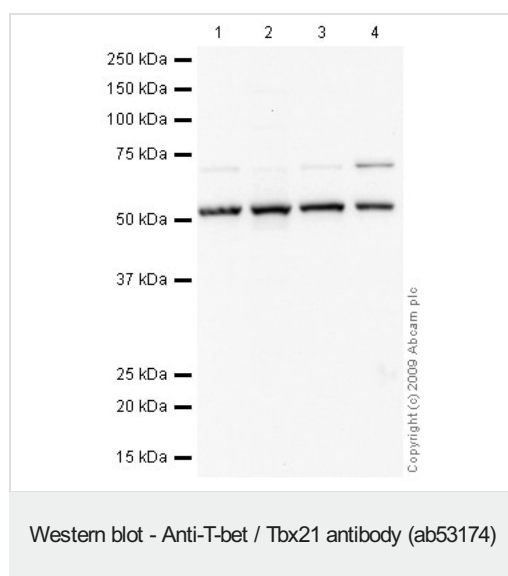
T-bet / Tbx21 was immunoprecipitated using 0.5mg Jurkat whole cell extract, 5µg of Rabbit polyclonal to and 50µl of protein G magnetic beads (+). No antibody was added to the control (-).

The antibody was incubated under agitation with Protein G beads for 10min, Jurkat whole cell extract lysate diluted in RIPA buffer was added to each sample and incubated for a further 10min under agitation.

Proteins were eluted by addition of 40µl SDS loading buffer and incubated for 10min at 70°C; 10µl of each sample was separated on a SDS PAGE gel, transferred to a nitrocellulose membrane, blocked with 5% BSA and probed with ab53174.

Secondary: Mouse monoclonal [SB62a] Secondary Antibody to Rabbit IgG light chain (HRP) ([ab99697](#)).

Band: 53kDa; T-bet / Tbx21



**All lanes :** Anti-T-bet / Tbx21 antibody (ab53174) at 1 µg/ml

**Lane 1 :** Jurkat (Human T cell lymphoblast-like cell line) Whole Cell Lysate

**Lane 2 :** Jurkat nuclear extract lysate (**ab14844**)

**Lane 3 :** Jurkat Whole Cell Lysate - Staurosporine Treated (24hr, 500nM)

**Lane 4 :** E14Tg2a (Mouse embryonic stem cell line) Whole Cell Lysate

Lysates/proteins at 10 µg per lane.

### Secondary

**All lanes :** Goat polyclonal to Rabbit IgG - H&L - Pre-Adsorbed (HRP) at 1/3000 dilution

Performed under reducing conditions.

**Predicted band size:** 58 kDa

**Observed band size:** 53 kDa

**Additional bands at:** 70 kDa. We are unsure as to the identity of these extra bands.

**Exposure time:** 3 minutes

**Please note:** All products are "FOR RESEARCH USE ONLY. NOT FOR USE IN DIAGNOSTIC PROCEDURES"

### Our Abpromise to you: Quality guaranteed and expert technical support

- Replacement or refund for products not performing as stated on the datasheet
- Valid for 12 months from date of delivery
- Response to your inquiry within 24 hours
- We provide support in Chinese, English, French, German, Japanese and Spanish
- Extensive multi-media technical resources to help you
- We investigate all quality concerns to ensure our products perform to the highest standards

If the product does not perform as described on this datasheet, we will offer a refund or replacement. For full details of the Abpromise, please visit <https://www.abcam.com/abpromise> or contact our technical team.

### Terms and conditions

- Guarantee only valid for products bought direct from Abcam or one of our authorized distributors