


Anti-TAB2 antibody ab153882

[2 References](#) [1 Image](#)

Overview

Product name	Anti-TAB2 antibody
Description	Rabbit polyclonal to TAB2
Host species	Rabbit
Tested applications	Suitable for: WB
Species reactivity	Reacts with: Mouse Predicted to work with: Human 
Immunogen	Recombinant fragment, corresponding to a region within amino acids 17-296 of Human TAB2.
Positive control	NIH3T3 whole cell lysate.
General notes	<p>The Life Science industry has been in the grips of a reproducibility crisis for a number of years. Abcam is leading the way in addressing this with our range of recombinant monoclonal antibodies and knockout edited cell lines for gold-standard validation. Please check that this product meets your needs before purchasing.</p> <p>If you have any questions, special requirements or concerns, please send us an inquiry and/or contact our Support team ahead of purchase. Recommended alternatives for this product can be found below, along with publications, customer reviews and Q&As</p>

Properties

Form	Liquid
Storage instructions	Shipped at 4°C. Upon delivery aliquot. Store at -20°C or -80°C. Avoid freeze / thaw cycle.
Storage buffer	pH: 7.00 Preservative: 0.01% Thimerosal (merthiolate) Constituents: 1.21% Tris, 0.75% Glycine, 10% Glycerol (glycerin, glycerine)
Purity	Immunogen affinity purified
Clonality	Polyclonal
Isotype	IgG

Applications

The **Abpromise guarantee** Our **Abpromise guarantee** covers the use of ab153882 in the following tested applications.

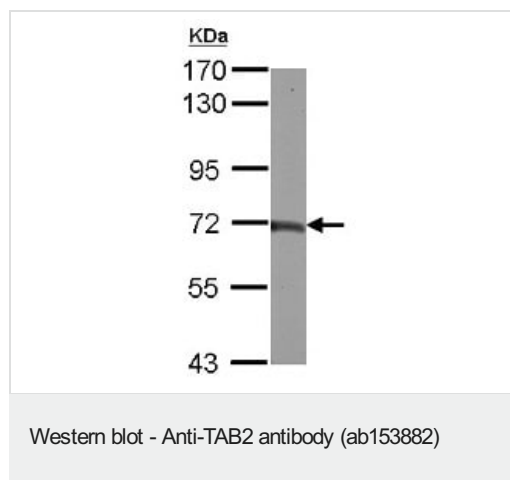
The application notes include recommended starting dilutions; optimal dilutions/concentrations should be determined by the end user.

Application	Abreviews	Notes
WB		1/500 - 1/3000. Predicted molecular weight: 76 kDa.

Target

Function	Adapter linking MAP3K7/TAK1 and TRAF6. Promotes MAP3K7 activation in the IL1 signaling pathway. The binding of 'Lys-63'-linked polyubiquitin chains to TAB2 promotes autophosphorylation of MAP3K7 at 'Thr-187'. Involved in heart development.
Tissue specificity	Widely expressed. In the embryo, expressed in the ventricular trabeculae, endothelial cells of the conotruncal cushions of the outflow tract and in the endothelial cells lining the developing aortic valves.
Involvement in disease	Defects in TAB2 are the cause of congenital heart disease non-syndromic type 2 (CHTD2) [MIM:612863]. It is a disease characterized by congenital developmental abnormalities involving structures of the heart. Clinical features include left ventricular outflow tract obstruction, subaortic stenosis, residual aortic regurgitation, atrial fibrillation, bicuspid aortic valve and aortic dilation. Note=A chromosomal aberration involving TAB2 has been found in a family with congenital heart disease. Translocation t(2;6)(q21;q25).
Sequence similarities	Contains 1 CUE domain. Contains 1 RanBP2-type zinc finger.
Post-translational modifications	Ubiquitinated; following IL1 stimulation or TRAF6 overexpression. Ubiquitination involves RBCK1 leading to proteasomal degradation. Phosphorylated.
Cellular localization	Membrane. Cytoplasm > cytosol. Following IL1 stimulation, translocation occurs from the membrane to cytosol.

Images



Anti-TAB2 antibody (ab153882) at 1/500 dilution + NIH3T3 whole cell lysate at 30 µg

Predicted band size: 76 kDa

7.5% SDS PAGE

Please note: All products are "FOR RESEARCH USE ONLY. NOT FOR USE IN DIAGNOSTIC PROCEDURES"

Our Abpromise to you: Quality guaranteed and expert technical support

- Replacement or refund for products not performing as stated on the datasheet
- Valid for 12 months from date of delivery
- Response to your inquiry within 24 hours

- We provide support in Chinese, English, French, German, Japanese and Spanish
- Extensive multi-media technical resources to help you
- We investigate all quality concerns to ensure our products perform to the highest standards

If the product does not perform as described on this datasheet, we will offer a refund or replacement. For full details of the Abpromise, please visit [**https://www.abcam.com/abpromise**](https://www.abcam.com/abpromise) or contact our technical team.

Terms and conditions

- Guarantee only valid for products bought direct from Abcam or one of our authorized distributors