




Product datasheet

Anti-TAB2 antibody ab222214

[1 References](#) [1 Image](#)

Overview

Product name	Anti-TAB2 antibody
Description	Rabbit polyclonal to TAB2
Host species	Rabbit
Tested applications	Suitable for: ICC/IF
Species reactivity	Reacts with: Human Predicted to work with: Mouse, Rat 
Immunogen	Recombinant fragment corresponding to Human TAB2 aa 300-400. Database link: Q9NYJ8  Run BLAST with  Run BLAST with
Positive control	ICC/IF: MCF7 cells.
General notes	<p>The Life Science industry has been in the grips of a reproducibility crisis for a number of years. Abcam is leading the way in addressing this with our range of recombinant monoclonal antibodies and knockout edited cell lines for gold-standard validation. Please check that this product meets your needs before purchasing.</p> <p>If you have any questions, special requirements or concerns, please send us an inquiry and/or contact our Support team ahead of purchase. Recommended alternatives for this product can be found below, along with publications, customer reviews and Q&As</p>

Properties

Form	Liquid
Storage instructions	Shipped at 4°C. Store at +4°C short term (1-2 weeks). Upon delivery aliquot. Store at -20°C long term. Avoid freeze / thaw cycle.
Storage buffer	pH: 7.20 Preservative: 0.02% Sodium azide Constituents: 40% Glycerol (glycerin, glycerine), PBS
Purity	Immunogen affinity purified
Clonality	Polyclonal
Isotype	IgG

Applications

The Abpromise guarantee

Our **Abpromise guarantee** covers the use of ab222214 in the following tested applications.

The application notes include recommended starting dilutions; optimal dilutions/concentrations should be determined by the end user.

Application	Abreviews	Notes
ICC/IF		Use a concentration of 0.25 - 2 µg/ml. Fixation/Permeabilization: PFA/Triton X-100.

Target

Function

Adapter linking MAP3K7/TAK1 and TRAF6. Promotes MAP3K7 activation in the IL1 signaling pathway. The binding of 'Lys-63'-linked polyubiquitin chains to TAB2 promotes autophosphorylation of MAP3K7 at 'Thr-187'. Involved in heart development.

Tissue specificity

Widely expressed. In the embryo, expressed in the ventricular trabeculae, endothelial cells of the conotruncal cushions of the outflow tract and in the endothelial cells lining the developing aortic valves.

Involvement in disease

Defects in TAB2 are the cause of congenital heart disease non-syndromic type 2 (CHTD2) [MIM:612863]. It is a disease characterized by congenital developmental abnormalities involving structures of the heart. Clinical features include left ventricular outflow tract obstruction, subaortic stenosis, residual aortic regurgitation, atrial fibrillation, bicuspid aortic valve and aortic dilation. Note=A chromosomal aberration involving TAB2 has been found in a family with congenital heart disease. Translocation t(2;6)(q21;q25).

Sequence similarities

Contains 1 CUE domain.
Contains 1 RanBP2-type zinc finger.

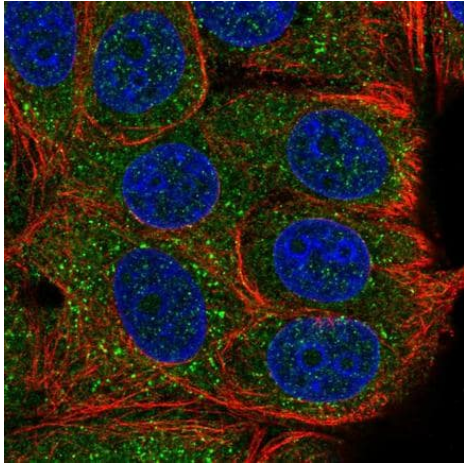
Post-translational modifications

Ubiquitinated; following IL1 stimulation or TRAF6 overexpression. Ubiquitination involves RBCK1 leading to proteasomal degradation.
Phosphorylated.

Cellular localization

Membrane. Cytoplasm > cytosol. Following IL1 stimulation, translocation occurs from the membrane to cytosol.

Images



Immunocytochemistry/ Immunofluorescence - Anti-TAB2 antibody (ab222214)

PFA-fixed, Triton X-100 permeabilized MCF7 (human breast adenocarcinoma cell line) cells stained for TAB2 (green) using ab222214 at 4 µg/ml in ICC/IF.

Please note: All products are "FOR RESEARCH USE ONLY. NOT FOR USE IN DIAGNOSTIC PROCEDURES"

Our Abpromise to you: Quality guaranteed and expert technical support

- Replacement or refund for products not performing as stated on the datasheet
- Valid for 12 months from date of delivery
- Response to your inquiry within 24 hours
- We provide support in Chinese, English, French, German, Japanese and Spanish
- Extensive multi-media technical resources to help you
- We investigate all quality concerns to ensure our products perform to the highest standards

If the product does not perform as described on this datasheet, we will offer a refund or replacement. For full details of the Abpromise, please visit <https://www.abcam.com/abpromise> or contact our technical team.

Terms and conditions

- Guarantee only valid for products bought direct from Abcam or one of our authorized distributors