

Product datasheet

Anti-TAF5L antibody [EPR11445] α ab172621

Recombinant RabMAb

3 Images

Overview

Product name	Anti-TAF5L antibody [EPR11445]
Description	Rabbit monoclonal [EPR11445] to TAF5L
Host species	Rabbit
Tested applications	Suitable for: ICC/IF, WB Unsuitable for: Flow Cyt, IHC-P or IP
Species reactivity	Reacts with: Human Does not react with: Mouse, Rat
Immunogen	Synthetic peptide within Human TAF5L aa 1-100. The exact sequence is proprietary. Database link: O75529
Positive control	HT-29, HT-1080, Jurkat, and HeLa whole cell lysate (ab150035); HeLa cells.
General notes	This product is a recombinant monoclonal antibody, which offers several advantages including: <ul style="list-style-type: none"> - High batch-to-batch consistency and reproducibility - Improved sensitivity and specificity - Long-term security of supply - Animal-free production For more information see here . Our RabMAb [®] technology is a patented hybridoma-based technology for making rabbit monoclonal antibodies. For details on our patents, please refer to RabMAb[®] patents .

Properties

Form	Liquid
Storage instructions	Shipped at 4°C. Store at +4°C short term (1-2 weeks). Upon delivery aliquot. Store at -20°C long term. Avoid freeze / thaw cycle.
Storage buffer	pH: 7.20 Preservative: 0.01% Sodium azide Constituents: 9% PBS, 40% Glycerol (glycerin, glycerine), 0.05% BSA, 50% Tissue culture supernatant
Purity	Tissue culture supernatant
Clonality	Monoclonal

Clone number EPR11445
Isotype IgG

Applications

The Abpromise guarantee Our **Abpromise guarantee** covers the use of ab172621 in the following tested applications.
The application notes include recommended starting dilutions; optimal dilutions/concentrations should be determined by the end user.

Application	Abreviews	Notes
ICC/IF		1/100 - 1/250.
WB		1/1000 - 1/10000. Predicted molecular weight: 66 kDa.

Application notes Is unsuitable for Flow Cyt, IHC-P or IP.

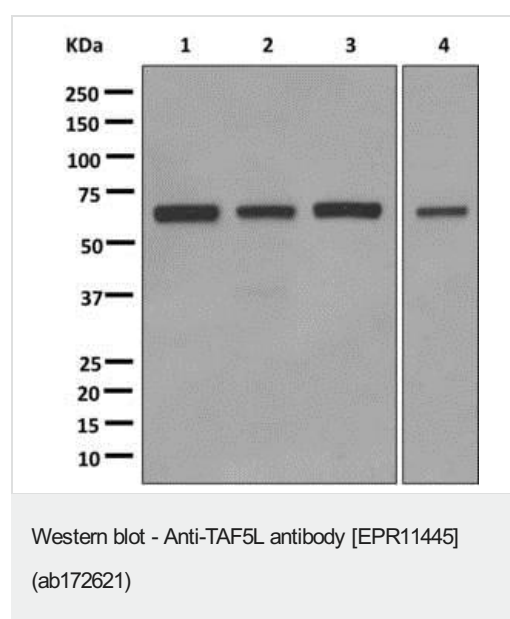
Target

Function Functions as a component of the PCAF complex. The PCAF complex is capable of efficiently acetylating histones in a nucleosomal context. The PCAF complex could be considered as the human version of the yeast SAGA complex.

Sequence similarities Belongs to the WD repeat TAF5 family.
Contains 6 WD repeats.

Cellular localization Nucleus.

Images

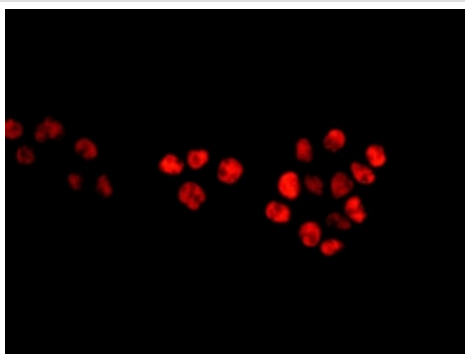


All lanes : Anti-TAF5L antibody [EPR11445] (ab172621) at 1/1000 dilution

Lane 1 : HT-29 lysate
Lane 2 : HT-1080 lysate
Lane 3 : Jurkat lysate
Lane 4 : HeLa lysate

Lysates/proteins at 10 µg per lane.

Predicted band size: 66 kDa



Immunofluorescent staining of HeLa cells labeling TAF5L with ab172621 at 1/100 dilution.

Immunocytochemistry/ Immunofluorescence - Anti-TAF5L antibody [EPR11445] (ab172621)

Why choose a recombinant antibody?



Research with confidence
Consistent and reproducible results



Long-term and scalable supply
Recombinant technology



Success from the first experiment
Confirmed specificity



Ethical standards compliant
Animal-free production

Anti-TAF5L antibody [EPR11445] (ab172621)

Please note: All products are "FOR RESEARCH USE ONLY. NOT FOR USE IN DIAGNOSTIC PROCEDURES"

Our Abpromise to you: Quality guaranteed and expert technical support

- Replacement or refund for products not performing as stated on the datasheet
- Valid for 12 months from date of delivery
- Response to your inquiry within 24 hours
- We provide support in Chinese, English, French, German, Japanese and Spanish
- Extensive multi-media technical resources to help you
- We investigate all quality concerns to ensure our products perform to the highest standards

If the product does not perform as described on this datasheet, we will offer a refund or replacement. For full details of the Abpromise, please visit <https://www.abcam.com/abpromise> or contact our technical team.

Terms and conditions

- Guarantee only valid for products bought direct from Abcam or one of our authorized distributors