




Product datasheet

Anti-TAGLN/Transgelin antibody ab10135

★★★★★ [2 Abreviews](#) [125 References](#) [1 Image](#)

Overview

Product name	Anti-TAGLN/Transgelin antibody
Description	Goat polyclonal to TAGLN/Transgelin
Host species	Goat
Tested applications	Suitable for: WB, IHC-P, IHC-Fr, ICC/IF, IHC-FoFr, Flow Cyt
Species reactivity	Reacts with: Mouse, Rat, Rabbit, Human Predicted to work with: Cow, Dog 
Immunogen	Synthetic peptide corresponding to Human TAGLN/Transgelin aa 189-200 (C terminal). Sequence: C-MTGYGRPRQIIS (Peptide available as ab16067 , ab23184) <div>  Run BLAST with  Run BLAST with </div>
Positive control	WB: Human testes lysate
General notes	<p>In contrast to fast and slow skeletal muscle cells that fuse and terminally differentiate, smooth muscle cells are able to simultaneously proliferate and express lineage-restricted proteins. One of these proteins, expressed exclusively in smooth muscles, has been referred to as SM22-alpha, a 22-kD protein with structural similarity to the vertebrate thin filament myofibrillar regulatory protein calponin and the Drosophila muscle protein mp20, neither of which play a direct role in the contractile apparatus. The protein is a transformation and shape-change sensitive actin cross-linking/gelling protein found in fibroblasts and smooth muscle. Its expression is down-regulated in many cell lines, and this down-regulation may be an early and sensitive marker for the onset of transformation. A functional role of this protein is unclear.</p> <p>The Life Science industry has been in the grips of a reproducibility crisis for a number of years. Abcam is leading the way in addressing this with our range of recombinant monoclonal antibodies and knockout edited cell lines for gold-standard validation. Please check that this product meets your needs before purchasing.</p> <p>If you have any questions, special requirements or concerns, please send us an inquiry and/or contact our Support team ahead of purchase. Recommended alternatives for this product can be found below, along with publications, customer reviews and Q&As</p>

Properties

Form	Liquid
Storage instructions	Shipped at 4°C. Upon delivery aliquot and store at -20°C or -80°C. Avoid repeated freeze / thaw cycles.
Storage buffer	pH: 7.30 Preservative: 0.02% Sodium azide Constituents: Tris buffered saline, 0.5% BSA
Purity	Immunogen affinity purified
Purification notes	Purified from goat serum by ammonium sulphate precipitation followed by antigen affinity chromatography using the immunizing peptide.
Primary antibody notes	In contrast to fast and slow skeletal muscle cells that fuse and terminally differentiate, smooth muscle cells are able to simultaneously proliferate and express lineage-restricted proteins. One of these proteins, expressed exclusively in smooth muscles, has been referred to as SM22-alpha, a 22-kD protein with structural similarity to the vertebrate thin filament myofibrillar regulatory protein calponin and the Drosophila muscle protein mp20, neither of which play a direct role in the contractile apparatus. The protein is a transformation and shape-change sensitive actin cross-linking/gelling protein found in fibroblasts and smooth muscle. Its expression is down-regulated in many cell lines, and this down-regulation may be an early and sensitive marker for the onset of transformation. A functional role of this protein is unclear.
Clonality	Polyclonal
Isotype	IgG

Applications

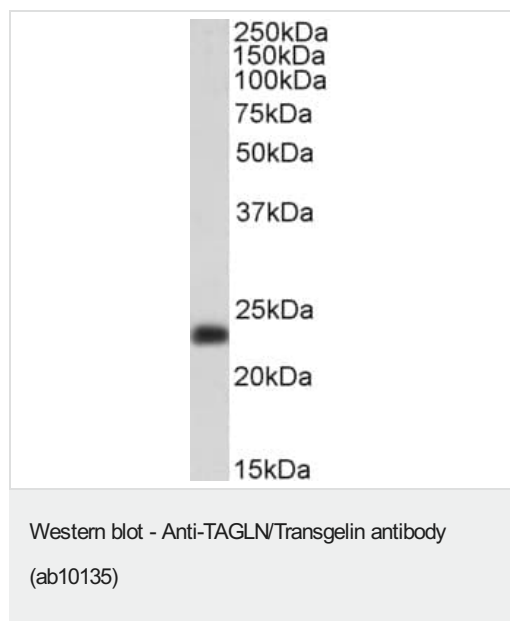
The Abpromise guarantee Our **Abpromise guarantee** covers the use of ab10135 in the following tested applications. The application notes include recommended starting dilutions; optimal dilutions/concentrations should be determined by the end user.

Application	Abreviews	Notes
WB	★★★★★ (2)	Use a concentration of 0.1 - 1 µg/ml. Detects a band of approximately 24 kDa (predicted molecular weight: 23 kDa). Primary incubation for 1 hour at room temperature.
IHC-P		Use at an assay dependent concentration. PubMed: 16080196
IHC-Fr		Use at an assay dependent concentration. PubMed: 28955046
ICC/IF		Use at an assay dependent concentration. PubMed: 22257561
IHC-FoFr		Use at an assay dependent concentration. PubMed: 26183159
Flow Cyt		Use at an assay dependent concentration. PubMed: 17099777 ab37373 - Goat polyclonal IgG, is suitable for use as an isotype control with this antibody.

Target

Function	Actin cross-linking/gelling protein (By similarity). Involved in calcium interactions and contractile properties of the cell that may contribute to replicative senescence.
Sequence similarities	Belongs to the calponin family. Contains 1 calponin-like repeat. Contains 1 CH (calponin-homology) domain.
Cellular localization	Cytoplasm.

Images



Anti-TAGLN/Transgelin antibody (ab10135) at 0.3 µg/ml + Human Testes lysate at 35 µg

Predicted band size: 23 kDa

Please note: All products are "FOR RESEARCH USE ONLY. NOT FOR USE IN DIAGNOSTIC PROCEDURES"

Our Abpromise to you: Quality guaranteed and expert technical support

- Replacement or refund for products not performing as stated on the datasheet
- Valid for 12 months from date of delivery
- Response to your inquiry within 24 hours
- We provide support in Chinese, English, French, German, Japanese and Spanish
- Extensive multi-media technical resources to help you
- We investigate all quality concerns to ensure our products perform to the highest standards

If the product does not perform as described on this datasheet, we will offer a refund or replacement. For full details of the Abpromise, please visit <https://www.abcam.com/abpromise> or contact our technical team.

Terms and conditions

- Guarantee only valid for products bought direct from Abcam or one of our authorized distributors