

Product datasheet

Anti-Talin 2 antibody [EPR2536(2)] ab108967

Recombinant **RabMAb**

[3 References](#) [5 Images](#)

Overview

Product name	Anti-Talin 2 antibody [EPR2536(2)]
Description	Rabbit monoclonal [EPR2536(2)] to Talin 2
Host species	Rabbit
Tested applications	Suitable for: WB Unsuitable for: ICC/IF or IHC-P
Species reactivity	Reacts with: Mouse, Rat, Human, African green monkey
Immunogen	Synthetic peptide. This information is proprietary to Abcam and/or its suppliers.
Positive control	COS-1, 293T, HeLa, and Jurkat whole cell lysate (ab7899)
General notes	This product is a recombinant monoclonal antibody, which offers several advantages including: <ul style="list-style-type: none"> - High batch-to-batch consistency and reproducibility - Improved sensitivity and specificity - Long-term security of supply - Animal-free production For more information see here . Our RabMAb [®] technology is a patented hybridoma-based technology for making rabbit monoclonal antibodies. For details on our patents, please refer to RabMAb[®] patents .

Properties

Form	Liquid
Storage instructions	Shipped at 4°C. Store at -20°C. Stable for 12 months at -20°C.
Storage buffer	pH: 7.20 Preservative: 0.01% Sodium azide Constituents: 40% Glycerol (glycerin, glycerine), 59% PBS, 0.05% BSA
Purity	Protein A purified
Clonality	Monoclonal
Clone number	EPR2536(2)
Isotype	IgG

Applications

The Abpromise guarantee

Our **Abpromise guarantee** covers the use of ab108967 in the following tested applications.

The application notes include recommended starting dilutions; optimal dilutions/concentrations should be determined by the end user.

Application	Abreviews	Notes
WB		1/10000 - 1/50000. Detects a band of approximately 270 kDa (predicted molecular weight: 272 kDa).

Application notes

Is unsuitable for ICC/IF or IHC-P.

Target

Function

As a major component of focal adhesion plaques that links integrin to the actin cytoskeleton, may play an important role in cell adhesion. Recruits PIP5K1C to focal adhesion plaques and strongly activates its kinase activity.

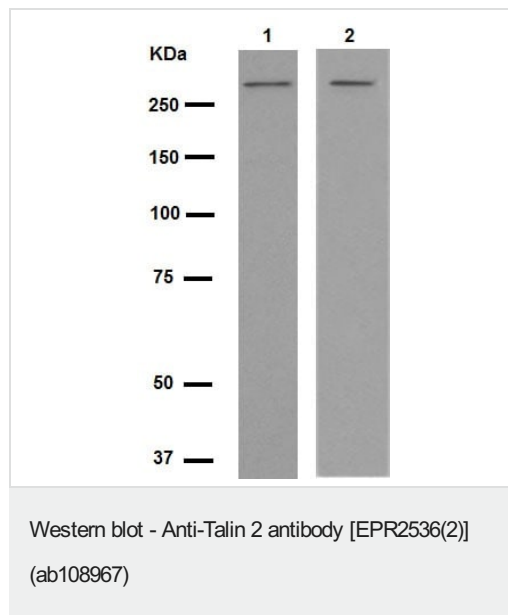
Sequence similarities

Contains 1 FERM domain.
Contains 1 ILWEQ domain.

Cellular localization

Cell junction > focal adhesion. Cell junction > synapse. Cell membrane. Cytoplasm > cytoskeleton. Focal adhesion plaques and synapses.

Images



All lanes : Anti-Talin 2 antibody [EPR2536(2)] (ab108967) at 1/50000 dilution (purified)

Lane 1 : Mouse heart tissue lysate

Lane 2 : Rat heart tissue lysate

Lysates/proteins at 20 µg per lane.

Secondary

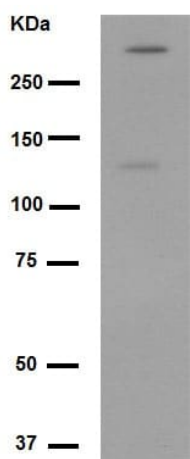
All lanes : HRP goat anti-rabbit (H+L) at 1/1000 dilution

Predicted band size: 272 kDa

Observed band size: 270 kDa

Blocking buffer: 5% NFDM/TBST

Dilution buffer: 5% NFDM/TBST



Western blot - Anti-Talin 2 antibody [EPR2536(2)]
(ab108967)

Anti-Talin 2 antibody [EPR2536(2)] (ab108967) at 1/50000 dilution
(purified) + Jurkat cell lysate at 10 µg

Secondary

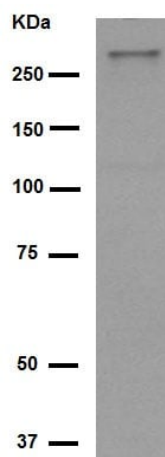
HRP goat anti-rabbit (H+L) at 1/1000 dilution

Predicted band size: 272 kDa

Observed band size: 270 kDa

Blocking buffer: 5% NFDM/TBST

Dilution buffer: 5% NFDM/TBST



Western blot - Anti-Talin 2 antibody [EPR2536(2)]
(ab108967)

Anti-Talin 2 antibody [EPR2536(2)] (ab108967) at 1/50000 dilution
(purified) + COS-1 cell lysate at 20 µg

Secondary

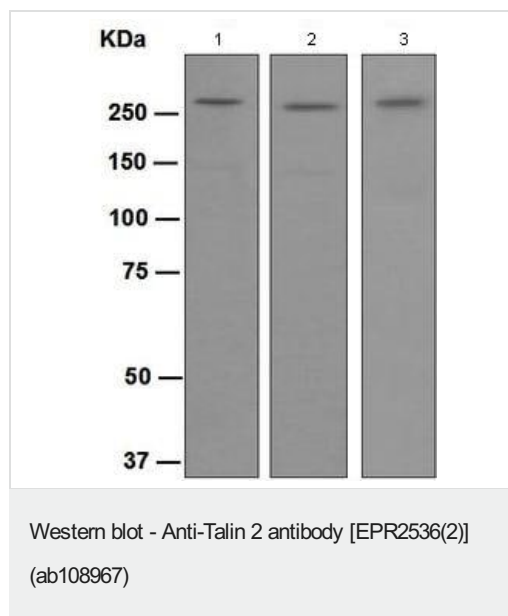
HRP goat anti-rabbit (H+L) at 1/1000 dilution

Predicted band size: 272 kDa

Observed band size: 270 kDa

Blocking buffer: 5% NFDM/TBST

Dilution buffer: 5% NFDM/TBST



All lanes : Anti-Talin 2 antibody [EPR2536(2)] (ab108967) at 1/50000 dilution (unpurified)

Lane 1 : COS-1 cell lysate

Lane 2 : 293T cell lysate

Lane 3 : HeLa cell lysate

Lysates/proteins at 10 µg per lane.

Secondary

All lanes : HRP labelled goat anti-rabbit at 1/2000 dilution

Predicted band size: 272 kDa

Observed band size: 270 kDa

Why choose a recombinant antibody?

Research with confidence
Consistent and reproducible results

Long-term and scalable supply
Recombinant technology

Success from the first experiment
Confirmed specificity

Ethical standards compliant
Animal-free production

Anti-Talin 2 antibody [EPR2536(2)] (ab108967)

Please note: All products are "FOR RESEARCH USE ONLY. NOT FOR USE IN DIAGNOSTIC PROCEDURES"

Our Abpromise to you: Quality guaranteed and expert technical support

- Replacement or refund for products not performing as stated on the datasheet
- Valid for 12 months from date of delivery
- Response to your inquiry within 24 hours
- We provide support in Chinese, English, French, German, Japanese and Spanish
- Extensive multi-media technical resources to help you
- We investigate all quality concerns to ensure our products perform to the highest standards

If the product does not perform as described on this datasheet, we will offer a refund or replacement. For full details of the Abpromise, please visit <https://www.abcam.com/abpromise> or contact our technical team.

Terms and conditions

- Guarantee only valid for products bought direct from Abcam or one of our authorized distributors