

## Product datasheet

### Anti-TBLR1/TBL1XR1 antibody ab24550

★★★★★ [2 Abreviews](#) [11 References](#) [1 Image](#)

#### Overview

<b>Product name</b>	Anti-TBLR1/TBL1XR1 antibody
<b>Description</b>	Rabbit polyclonal to TBLR1/TBL1XR1
<b>Host species</b>	Rabbit
<b>Specificity</b>	Does not cross-react with TBL1.
<b>Tested applications</b>	<b>Suitable for:</b> WB
<b>Species reactivity</b>	<b>Reacts with:</b> Human
<b>Immunogen</b>	Recombinant full length protein corresponding to Human TBLR1/TBL1XR1.
<b>General notes</b>	<p>The Life Science industry has been in the grips of a reproducibility crisis for a number of years. Abcam is leading the way in addressing this with our range of recombinant monoclonal antibodies and knockout edited cell lines for gold-standard validation. Please check that this product meets your needs before purchasing.</p> <p>If you have any questions, special requirements or concerns, please send us an inquiry and/or contact our Support team ahead of purchase. Recommended alternatives for this product can be found below, along with publications, customer reviews and Q&amp;As</p>

#### Properties

<b>Form</b>	Liquid
<b>Storage instructions</b>	Shipped at 4°C. Store at +4°C short term (1-2 weeks). Upon delivery aliquot. Store at -20°C or -80°C. Avoid freeze / thaw cycle.
<b>Purity</b>	Whole antiserum
<b>Clonality</b>	Polyclonal
<b>Isotype</b>	IgG

#### Applications

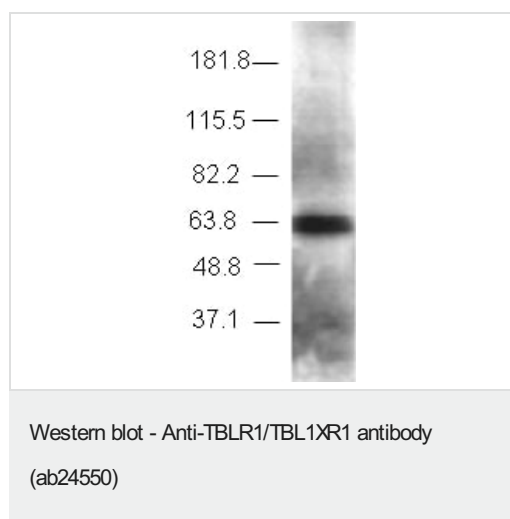
**The Abpromise guarantee** Our **Abpromise guarantee** covers the use of ab24550 in the following tested applications. The application notes include recommended starting dilutions; optimal dilutions/concentrations should be determined by the end user.

Application	Abreviews	Notes
WB		1/2000. Detects a band of approximately 64 kDa (predicted molecular weight: 56 kDa).

## Target

<b>Function</b>	F-box-like protein involved in the recruitment of the ubiquitin/19S proteasome complex to nuclear receptor-regulated transcription units. Plays an essential role in transcription activation mediated by nuclear receptors. Probably acts as integral component of the N-Cor corepressor complex that mediates the recruitment of the 19S proteasome complex, leading to the subsequent proteasomal degradation of N-Cor complex, thereby allowing cofactor exchange, and transcription activation.
<b>Tissue specificity</b>	Ubiquitous.
<b>Sequence similarities</b>	Belongs to the WD repeat EBI family. Contains 1 F-box-like domain. Contains 1 LisH domain. Contains 8 WD repeats.
<b>Domain</b>	The F-box-like domain is related to the F-box domain, and apparently displays the same function as component of ubiquitin E3 ligase complexes.
<b>Post-translational modifications</b>	Phosphorylated upon DNA damage, probably by ATM or ATR.
<b>Cellular localization</b>	Nucleus.

## Images



Anti-TBLR1/TBL1XR1 antibody (ab24550) at 1/2000 dilution + HeLa nuclear extract

**Predicted band size:** 56 kDa

**Observed band size:** 60 kDa

**Please note:** All products are "FOR RESEARCH USE ONLY. NOT FOR USE IN DIAGNOSTIC PROCEDURES"

**Our Abpromise to you: Quality guaranteed and expert technical support**

- Replacement or refund for products not performing as stated on the datasheet
- Valid for 12 months from date of delivery
- Response to your inquiry within 24 hours
- We provide support in Chinese, English, French, German, Japanese and Spanish
- Extensive multi-media technical resources to help you
- We investigate all quality concerns to ensure our products perform to the highest standards

If the product does not perform as described on this datasheet, we will offer a refund or replacement. For full details of the Abpromise, please visit <https://www.abcam.com/abpromise> or contact our technical team.

#### **Terms and conditions**

---

- Guarantee only valid for products bought direct from Abcam or one of our authorized distributors