




Product datasheet

Anti-TC10 antibody ab168645

[1 References](#) [2 Images](#)

Overview

Product name	Anti-TC10 antibody
Description	Mouse polyclonal to TC10
Host species	Mouse
Tested applications	Suitable for: WB, ICC/IF
Species reactivity	Reacts with: Human Predicted to work with: Mouse, Rat 
Immunogen	Recombinant full length protein within Human TC10 aa 1 to the C-terminus. The exact immunogen sequence used to generate this antibody is proprietary information. If additional detail on the immunogen is needed to determine the suitability of the antibody for your needs, please contact our Scientific Support team to discuss your requirements. Database link: P17081  Run BLAST with  Run BLAST with
Positive control	TC10 transfected 293T cell lysate. HeLa cells.
General notes	<p>The Life Science industry has been in the grips of a reproducibility crisis for a number of years. Abcam is leading the way in addressing this with our range of recombinant monoclonal antibodies and knockout edited cell lines for gold-standard validation. Please check that this product meets your needs before purchasing.</p> <p>If you have any questions, special requirements or concerns, please send us an inquiry and/or contact our Support team ahead of purchase. Recommended alternatives for this product can be found below, along with publications, customer reviews and Q&As</p>

Properties

Form	Liquid
Storage instructions	Shipped at 4°C. Store at +4°C short term (1-2 weeks). Upon delivery aliquot. Store at -20°C long term.
Storage buffer	pH: 7.4 Constituent: 99% PBS
Purity	Protein A purified
Clonality	Polyclonal
Isotype	IgG

Applications

The Abpromise guarantee

Our **Abpromise guarantee** covers the use of ab168645 in the following tested applications.

The application notes include recommended starting dilutions; optimal dilutions/concentrations should be determined by the end user.

Application	Abreviews	Notes
WB		Use a concentration of 1 µg/ml. Predicted molecular weight: 23 kDa.
ICC/IF		Use a concentration of 10 µg/ml.

Target

Function

Plasma membrane-associated small GTPase which cycles between an active GTP-bound and an inactive GDP-bound state. In active state binds to a variety of effector proteins to regulate cellular responses. Involved in epithelial cell polarization processes. May play a role in CFTR trafficking to the plasma membrane. Causes the formation of thin, actin-rich surface projections called filopodia.

Sequence similarities

Belongs to the small GTPase superfamily. Rho family.

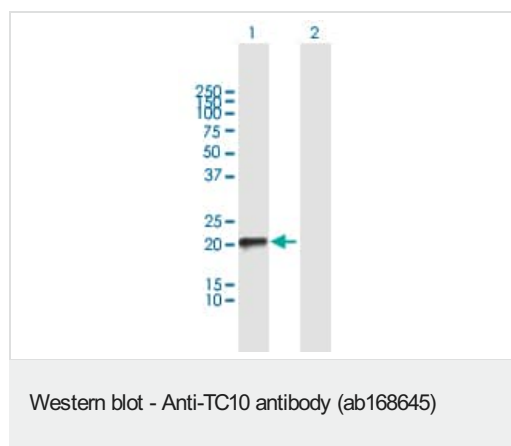
Post-translational modifications

May be post-translationally modified by both palmitoylation and polyisoprenylation.

Cellular localization

Cytoplasm. Cell membrane.

Images



All lanes : Anti-TC10 antibody (ab168645) at 1 µg/ml

Lane 1 : TC10 transfected 293T cell lysate

Lane 2 : Non-transfected 293T cell lysate

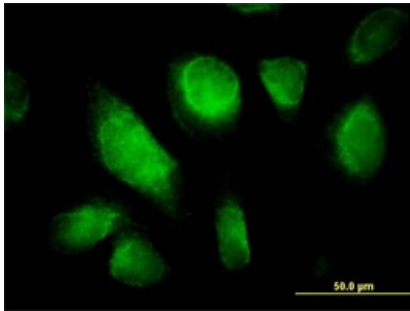
Lysates/proteins at 15 µl per lane.

Secondary

All lanes : Goat Anti-Mouse IgG (H&L)-HRP
at 1/2500 dilution

Developed using the ECL technique.

Predicted band size: 23 kDa



Immunofluorescence analysis of HeLa cells, labeling TC10 with ab168645 at 10 µg/ml.

Immunocytochemistry/ Immunofluorescence - Anti-TC10 antibody (ab168645)

Please note: All products are "FOR RESEARCH USE ONLY. NOT FOR USE IN DIAGNOSTIC PROCEDURES"

Our Abpromise to you: Quality guaranteed and expert technical support

- Replacement or refund for products not performing as stated on the datasheet
- Valid for 12 months from date of delivery
- Response to your inquiry within 24 hours
- We provide support in Chinese, English, French, German, Japanese and Spanish
- Extensive multi-media technical resources to help you
- We investigate all quality concerns to ensure our products perform to the highest standards

If the product does not perform as described on this datasheet, we will offer a refund or replacement. For full details of the Abpromise, please visit <https://www.abcam.com/abpromise> or contact our technical team.

Terms and conditions

- Guarantee only valid for products bought direct from Abcam or one of our authorized distributors