


## Product datasheet

# Anti-TCEA1 antibody [EPR14821] ab185947

Recombinant RabMAb

[1 References](#) [7 Images](#)

### Overview

<b>Product name</b>	Anti-TCEA1 antibody [EPR14821]
<b>Description</b>	Rabbit monoclonal [EPR14821] to TCEA1
<b>Host species</b>	Rabbit
<b>Tested applications</b>	<b>Suitable for:</b> Flow Cyt (Intra), WB, IHC-P, ICC/IF, IP
<b>Species reactivity</b>	<b>Reacts with:</b> Mouse, Human <b>Predicted to work with:</b> Rat 
<b>Immunogen</b>	Synthetic peptide. This information is proprietary to Abcam and/or its suppliers.
<b>Positive control</b>	K562, HeLa, SP2/0 and HUVEC cell lysate; Human bladder transitional cell carcinoma tissue; HeLa, HUVEC cells
<b>General notes</b>	<p>This product is a recombinant monoclonal antibody, which offers several advantages including:</p> <ul style="list-style-type: none"><li>- High batch-to-batch consistency and reproducibility</li><li>- Improved sensitivity and specificity</li><li>- Long-term security of supply</li><li>- Animal-free production</li></ul> <p>For more information <a href="#">see here</a>.</p> <p>Our RabMAb<sup>®</sup> technology is a patented hybridoma-based technology for making rabbit monoclonal antibodies. For details on our patents, please refer to <a href="#">RabMAb<sup>®</sup> patents</a>.</p>

### Properties

<b>Form</b>	Liquid
<b>Storage instructions</b>	Shipped at 4°C. Store at +4°C short term (1-2 weeks). Upon delivery aliquot. Store at -20°C long term. Avoid freeze / thaw cycle.
<b>Storage buffer</b>	pH: 7.2 Preservative: 0.01% Sodium azide Constituents: 59% PBS, 40% Glycerol (glycerin, glycerine), 0.05% BSA
<b>Purity</b>	Protein A purified
<b>Clonality</b>	Monoclonal
<b>Clone number</b>	EPR14821

Isotype

IgG

## Applications

### The Abpromise guarantee

Our **Abpromise guarantee** covers the use of ab185947 in the following tested applications.

The application notes include recommended starting dilutions; optimal dilutions/concentrations should be determined by the end user.

Application	Abreviews	Notes
Flow Cyt (Intra)		1/250. <b>ab172730</b> - Rabbit monoclonal IgG, is suitable for use as an isotype control with this antibody.
WB		1/1000 - 1/10000. Detects a band of approximately 34 kDa (predicted molecular weight: 34 kDa).
IHC-P		1/500. Perform heat mediated antigen retrieval with Tris/EDTA buffer pH 9.0 before commencing with IHC staining protocol.
ICC/IF		1/500.
IP		1/30 - 1/50.

## Target

### Function

Necessary for efficient RNA polymerase II transcription elongation past template-encoded arresting sites. The arresting sites in DNA have the property of trapping a certain fraction of elongating RNA polymerases that pass through, resulting in locked ternary complexes. Cleavage of the nascent transcript by S-II allows the resumption of elongation from the new 3'-terminus.

### Involvement in disease

Note=A chromosomal aberration involving TCEA1 may be a cause of salivary gland pleiomorphic adenomas (PA) [181030]. Pleiomorphic adenomas are the most common benign epithelial tumors of the salivary gland. Translocation t(3;8)(p21;q12) with PLAG1.

### Sequence similarities

Belongs to the TFS-II family.  
Contains 1 TFIS central domain.  
Contains 1 TFIS N-terminal domain.  
Contains 1 TFIS-type zinc finger.

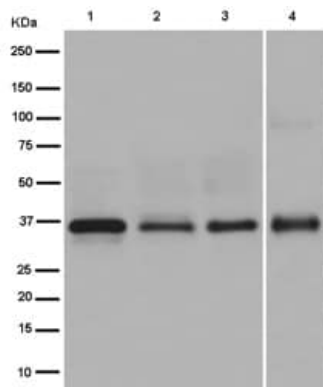
### Post-translational modifications

Phosphorylated upon DNA damage, probably by ATM or ATR.

### Cellular localization

Nucleus.

## Images



Western blot - Anti-TCEA1 antibody [EPR14821] (ab185947)

**All lanes** : Anti-TCEA1 antibody [EPR14821] (ab185947) at 1/10000 dilution

**Lane 1** : K562 cell lysate

**Lane 2** : HeLa cell lysate

**Lane 3** : SP2/0 cell lysate

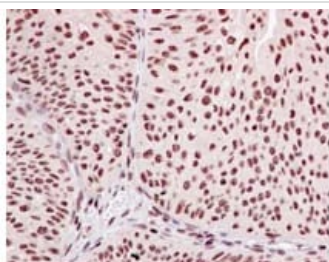
**Lane 4** : HUVEC cell lysate

Lysates/proteins at 20 µg per lane.

### Secondary

**All lanes** : Goat Anti-Rabbit IgG, (H+L), Peroxidase conjugated at 1/1000 dilution

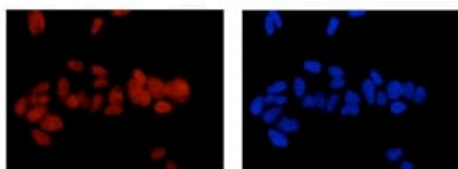
**Predicted band size:** 34 kDa



Immunohistochemistry (Formalin/PFA-fixed paraffin-embedded sections) - Anti-TCEA1 antibody [EPR14821] (ab185947)

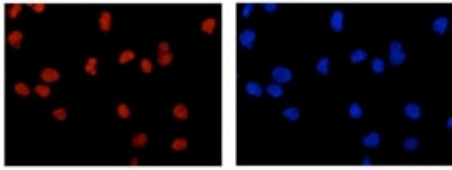
Immunohistochemical analysis of paraffin embedded Human bladder transitional cell carcinoma tissue labeling TCEA1 with ab185947 at 1/500 dilution. Counterstained with Hematoxylin.

Perform heat mediated antigen retrieval with EDTA buffer pH 9 before commencing with IHC staining protocol.



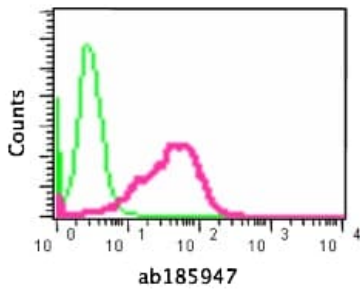
Immunocytochemistry/ Immunofluorescence - Anti-TCEA1 antibody [EPR14821] (ab185947)

Immunofluorescent staining of -20 °C acetone fixed HeLa cells labeling TCEA1 with ab185947 at 1/500 dilution (red; left image) and DAPI nuclear staining (blue; right image). Secondary staining with Goat anti Rabbit IgG (Alexa Fluor® 555) at a 1/200 dilution.



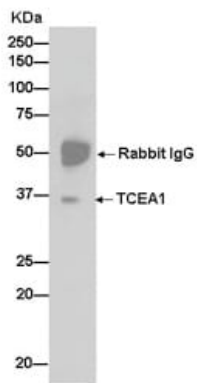
Immunocytochemistry/ Immunofluorescence - Anti-TCEA1 antibody [EPR14821] (ab185947)

Immunofluorescent staining of 4% paraformaldehyde fixed HUVEC cells labeling TCEA1 with ab185947 at 1/500 dilution (red; left image) and DAPI nuclear staining (blue; right image). Secondary staining with Goat anti Rabbit IgG (Alexa Fluor<sup>®</sup> 555) at a 1/200 dilution.



Flow Cytometry (Intracellular) - Anti-TCEA1 antibody [EPR14821] (ab185947)





Intracellular flow cytometric analysis of 2% paraformaldehyde HeLa cells labeling TCEA1 with ab185947 at 1/250 dilution (red) compared to a Rabbit monoclonal IgG isotype control antibody (green). Secondary staining with Goat anti Rabbit IgG (FITC) at a 1/150 dilution.



Immunoprecipitation - Anti-TCEA1 antibody [EPR14821] (ab185947)

Immunoprecipitation analysis of HeLa cell lysate labeling TCEA1 with ab185947 at 1/50 dilution. Secondary staining with Goat anti Rabbit IgG (H+L) Peroxidase conjugated antibody at a 1/1000 dilution.

Why choose a recombinant antibody?

 <p><b>Research with confidence</b> Consistent and reproducible results</p>	 <p><b>Long-term and scalable supply</b> Recombinant technology</p>
 <p><b>Success from the first experiment</b> Confirmed specificity</p>	 <p><b>Ethical standards compliant</b> Animal-free production</p>

Anti-TCEA1 antibody [EPR14821] (ab185947)

**Please note:** All products are "FOR RESEARCH USE ONLY. NOT FOR USE IN DIAGNOSTIC PROCEDURES"

### Our Abpromise to you: Quality guaranteed and expert technical support

---

- Replacement or refund for products not performing as stated on the datasheet
- Valid for 12 months from date of delivery
- Response to your inquiry within 24 hours
- We provide support in Chinese, English, French, German, Japanese and Spanish
- Extensive multi-media technical resources to help you
- We investigate all quality concerns to ensure our products perform to the highest standards

If the product does not perform as described on this datasheet, we will offer a refund or replacement. For full details of the Abpromise, please visit <https://www.abcam.com/abpromise> or contact our technical team.

### Terms and conditions

---

- Guarantee only valid for products bought direct from Abcam or one of our authorized distributors