

## Product datasheet

# Anti-TCEB2/Elongin-B antibody [EPR10441(B)] ab154854

Recombinant RabMAb

[1 References](#) [3 Images](#)

### Overview

<b>Product name</b>	Anti-TCEB2/Elongin-B antibody [EPR10441(B)]
<b>Description</b>	Rabbit monoclonal [EPR10441(B)] to TCEB2/Elongin-B
<b>Host species</b>	Rabbit
<b>Tested applications</b>	<b>Suitable for:</b> Flow Cyt (Intra), WB <b>Unsuitable for:</b> ICC/IF or IHC-P
<b>Species reactivity</b>	<b>Reacts with:</b> Human
<b>Immunogen</b>	Synthetic peptide corresponding to Human TCEB2/Elongin-B. Database link: <a href="#">Q15370</a>
<b>Positive control</b>	WB: Jurkat, A431, K562 cell lysates. Flow cyto (intra): Jurkat cells.
<b>General notes</b>	<p>This product is a recombinant monoclonal antibody, which offers several advantages including:</p> <ul style="list-style-type: none"> <li>- High batch-to-batch consistency and reproducibility</li> <li>- Improved sensitivity and specificity</li> <li>- Long-term security of supply</li> <li>- Animal-free production</li> </ul> <p>For more information <a href="#">see here</a>.</p> <p>Our RabMAb<sup>®</sup> technology is a patented hybridoma-based technology for making rabbit monoclonal antibodies. For details on our patents, please refer to <a href="#">RabMAb<sup>®</sup> patents</a>.</p> <p>Mouse, Rat: We have preliminary internal testing data to indicate this antibody may not react with these species. Please contact us for more information.</p>

### Properties

<b>Form</b>	Liquid
<b>Storage instructions</b>	Shipped at 4°C. Store at -20°C.
<b>Storage buffer</b>	pH: 7.2 Preservative: 0.01% Sodium azide Constituents: 9% PBS, 40% Glycerol (glycerin, glycerine), 0.05% BSA, 50% Tissue culture supernatant
<b>Purity</b>	Tissue culture supernatant

<b>Clonality</b>	Monoclonal
<b>Clone number</b>	EPR10441(B)
<b>Isotype</b>	IgG

## Applications

**The Abpromise guarantee** Our **Abpromise guarantee** covers the use of ab154854 in the following tested applications. The application notes include recommended starting dilutions; optimal dilutions/concentrations should be determined by the end user.

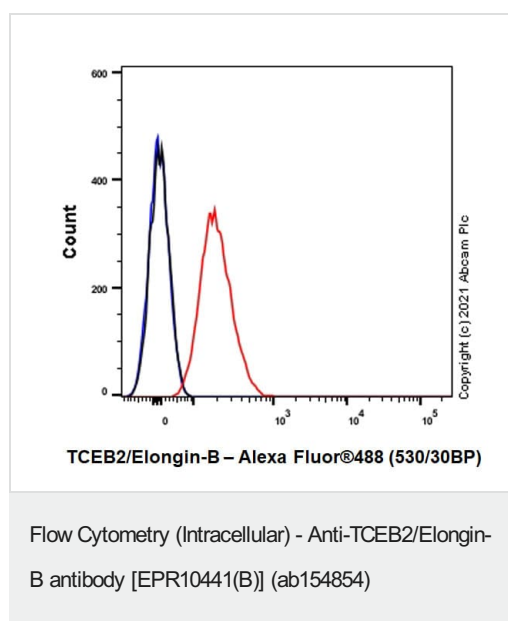
Application	Abreviews	Notes
<b>Flow Cyt (Intra)</b>		1/10 - 1/100. <b>ab172730</b> - Rabbit monoclonal IgG, is suitable for use as an isotype control with this antibody.
<b>WB</b>		1/1000 - 1/10000. Predicted molecular weight: 13 kDa.

**Application notes** Is unsuitable for ICC/IF or IHC-P.

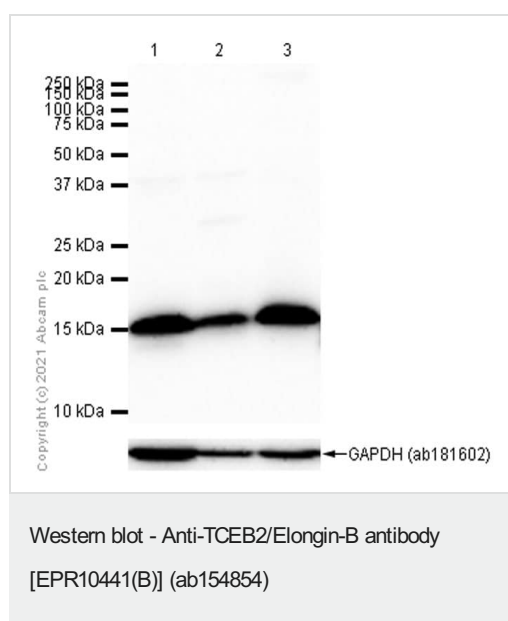
## Target

<b>Function</b>	<p>SIII, also known as elongin, is a general transcription elongation factor that increases the RNA polymerase II transcription elongation past template-encoded arresting sites. Subunit A is transcriptionally active and its transcription activity is strongly enhanced by binding to the dimeric complex of the SIII regulatory subunits B and C (elongin BC complex).</p> <p>The elongin BC complex seems to be involved as an adapter protein in the proteasomal degradation of target proteins via different E3 ubiquitin ligase complexes, including the von Hippel-Lindau ubiquitination complex CBC(VHL). By binding to BC-box motifs it seems to link target recruitment subunits, like VHL and members of the SOCS box family, to Cullin/RBX1 modules that activate E2 ubiquitination enzymes.</p>
<b>Pathway</b>	Protein modification; protein ubiquitination.
<b>Sequence similarities</b>	Contains 1 ubiquitin-like domain.
<b>Cellular localization</b>	Nucleus.

## Images



Flow cytometry analysis of Jurkat (Human T cell leukemia T lymphocyte) labeling TCEB2/Elongin-B with purified ab154854 at 1/20 dilution (red). Cells were fixed with 4% paraformaldehyde and permeabilised with 90% methanol. Goat anti rabbit IgG (Alexa Fluor® 488, **ab150081**) was used as a secondary antibody at 1/2000 dilution. Isotype control -Rabbit monoclonal IgG (Black). Unlabeled control -Cell without incubation with primary antibody and secondary antibody (Blue).



**All lanes** : Anti-TCEB2/Elongin-B antibody [EPR10441(B)] (ab154854) at 1/1000 dilution

**Lane 1** : Jurkat (Human T cell leukemia T lymphocyte) whole cell lysate

**Lane 2** : A431 (Human epidermoid carcinoma epithelial cell) whole cell lysate

**Lane 3** : K-562 (Human chronic myelogenous leukemia lymphoblast) whole cell lysate

Lysates/proteins at 20 µg per lane.

## Secondary

**All lanes** : Goat Anti-Rabbit IgG H&L (HRP) (**ab97051**) at 1/20000 dilution

**Predicted band size:** 13 kDa

**Observed band size:** 15 kDa

Blocking and diluting buffer and concentration: 5% NFD/MTBST.

**ab181602**, anti GAPDH antibody was used as loading control.

Why choose a recombinant antibody?

 <p><b>Research with confidence</b> Consistent and reproducible results</p>	 <p><b>Long-term and scalable supply</b> Recombinant technology</p>
 <p><b>Success from the first experiment</b> Confirmed specificity</p>	 <p><b>Ethical standards compliant</b> Animal-free production</p>

Anti-TCEB2/Elongin-B antibody [EPR10441(B)]  
(ab154854)

**Please note:** All products are "FOR RESEARCH USE ONLY. NOT FOR USE IN DIAGNOSTIC PROCEDURES"

### Our Abpromise to you: Quality guaranteed and expert technical support

---

- Replacement or refund for products not performing as stated on the datasheet
- Valid for 12 months from date of delivery
- Response to your inquiry within 24 hours
- We provide support in Chinese, English, French, German, Japanese and Spanish
- Extensive multi-media technical resources to help you
- We investigate all quality concerns to ensure our products perform to the highest standards

If the product does not perform as described on this datasheet, we will offer a refund or replacement. For full details of the Abpromise, please visit <https://www.abcam.com/abpromise> or contact our technical team.

### Terms and conditions

---

- Guarantee only valid for products bought direct from Abcam or one of our authorized distributors