


## Product datasheet

### Anti-TCF-4 antibody **ab130014**

★★★★★ [1 Abreviews](#) [12 References](#) [1 Image](#)

#### Overview

<b>Product name</b>	Anti-TCF-4 antibody
<b>Description</b>	Rabbit polyclonal to TCF-4
<b>Host species</b>	Rabbit
<b>Tested applications</b>	<b>Suitable for:</b> WB
<b>Species reactivity</b>	<b>Reacts with:</b> Mouse, Human <b>Predicted to work with:</b> Horse, Cow, Dog, Macaque monkey, Gorilla, Orangutan 
<b>Immunogen</b>	Synthetic peptide corresponding to Mouse TCF-4 aa 50-150 conjugated to keyhole limpet haemocyanin. Database link: <a href="#">Q60722</a> (Peptide available as <a href="#">ab229703</a> )
<b>Positive control</b>	This antibody gave a positive signal in the following Mouse tissue lysates: Cortex; Cerebellum; Olfactory Bulb; Hippocampus; Liver; as well as the following whole cell lysates: HepG2; HCT116; Caco2.
<b>General notes</b>	<p>The Life Science industry has been in the grips of a reproducibility crisis for a number of years. Abcam is leading the way in addressing this with our range of recombinant monoclonal antibodies and knockout edited cell lines for gold-standard validation. Please check that this product meets your needs before purchasing.</p> <p>If you have any questions, special requirements or concerns, please send us an inquiry and/or contact our Support team ahead of purchase. Recommended alternatives for this product can be found below, along with publications, customer reviews and Q&amp;As</p>

#### Properties

<b>Form</b>	Liquid
<b>Storage instructions</b>	Shipped at 4°C. Store at +4°C short term (1-2 weeks). Upon delivery aliquot. Store at -20°C or -80°C. Avoid freeze / thaw cycle.
<b>Storage buffer</b>	pH: 7.40 Preservative: 0.02% Sodium azide Constituent: PBS
	Batches of this product that have a concentration < 1mg/ml may have BSA added as a stabilising agent. If you would like information about the formulation of a specific lot, please contact our

scientific support team who will be happy to help.

<b>Purity</b>	Immunogen affinity purified
<b>Clonality</b>	Polyclonal
<b>Isotype</b>	IgG

## Applications

**The Abpromise guarantee** Our **Abpromise guarantee** covers the use of ab130014 in the following tested applications.

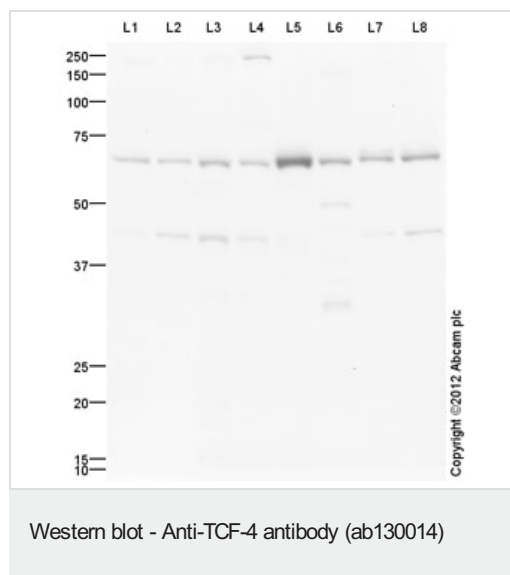
The application notes include recommended starting dilutions; optimal dilutions/concentrations should be determined by the end user.

Application	Abreviews	Notes
<b>WB</b>		Use a concentration of 1 µg/ml. Detects a band of approximately 71 kDa (predicted molecular weight: 71 kDa).

## Target

<b>Function</b>	Transcription factor that binds to the immunoglobulin enhancer Mu-E5/KE5-motif. Binds to the E-box present in the somatostatin receptor 2 initiator element (SSTR2-ISR) to activate transcription (By similarity). Preferentially binds to either 5'-ACANNTGT-3' or 5'-CCANNTGG-3'.
<b>Tissue specificity</b>	Expressed in adult heart, brain, placenta, skeletal muscle and to a lesser extent in the lung. In developing embryonic tissues, expression mostly occurs in the brain.
<b>Involvement in disease</b>	Defects in TCF4 are a cause of Pitt-Hopkins syndrome (PTHS) [MIM:610954]. PTHS is a rare syndromic encephalopathy characterized by severe psychomotor delay, epilepsy, daily bouts of diurnal hyperventilation starting in infancy, mild postnatal growth retardation, postnatal microcephaly, and distinctive facial features. Since most hitherto reported cases have been sporadic, with males and females equally affected, PTHS is regarded as an autosomal dominant condition.
<b>Sequence similarities</b>	Contains 1 basic helix-loop-helix (bHLH) domain.
<b>Domain</b>	the 9aaTAD motif is a transactivation domain present in a large number of yeast and animal transcription factors.
<b>Cellular localization</b>	Nucleus.

## Images



**All lanes :** Anti-TCF-4 antibody (ab130014) at 1 µg/ml

**Lane 1 :** Mouse Cortex Tissue Lysate

**Lane 2 :** Cerebellum Mouse Tissue Lysate

**Lane 3 :** Mouse Olfactory Bulb Lysate

**Lane 4 :** Mouse Hippocampus Tissue Lysate

**Lane 5 :** HepG2 (Human hepatocellular liver carcinoma cell line) Whole Cell Lysate

**Lane 6 :** Liver (Mouse) Tissue Lysate

**Lane 7 :** HCT 116 (Human Colorectal Carcinoma) Whole Cell Lysate

**Lane 8 :** Caco 2 (Human colonic carcinoma cell line) Whole Cell Lysate

Lysates/proteins at 10 µg per lane.

### Secondary

**All lanes :** Goat Anti-Rabbit IgG H&L (HRP) (**ab97051**) at 1/10000 dilution

Developed using the ECL technique.

Performed under reducing conditions.

**Predicted band size:** 71 kDa

**Observed band size:** 71 kDa

**Additional bands at:** 260 kDa, 45 kDa. We are unsure as to the identity of these extra bands.

**Exposure time:** 2 minutes

This blot was produced using a 4-12% Bis-tris gel under the MOPS buffer system. The gel was run at 200V for 50 minutes before being transferred onto a Nitrocellulose membrane at 30V for 70 minutes.

The membrane was then blocked for an hour using 5% Bovine Serum Albumin before being incubated with ab130014 overnight at 4°C. Antibody binding was detected using an anti-rabbit antibody conjugated to HRP, and visualised using ECL development solution.

**Please note:** All products are "FOR RESEARCH USE ONLY. NOT FOR USE IN DIAGNOSTIC PROCEDURES"

### **Our Abpromise to you: Quality guaranteed and expert technical support**

---

- Replacement or refund for products not performing as stated on the datasheet
- Valid for 12 months from date of delivery
- Response to your inquiry within 24 hours
- We provide support in Chinese, English, French, German, Japanese and Spanish
- Extensive multi-media technical resources to help you
- We investigate all quality concerns to ensure our products perform to the highest standards

If the product does not perform as described on this datasheet, we will offer a refund or replacement. For full details of the Abpromise, please visit <https://www.abcam.com/abpromise> or contact our technical team.

### **Terms and conditions**

---

- Guarantee only valid for products bought direct from Abcam or one of our authorized distributors