


Product datasheet

Anti-TCF12 antibody ab70746

[5 References](#) [3 Images](#)

Overview

Product name	Anti-TCF12 antibody
Description	Rabbit polyclonal to TCF12
Host species	Rabbit
Tested applications	Suitable for: IP, IHC-P, WB
Species reactivity	Reacts with: Human Predicted to work with: Mouse, Rat, Cow, Chimpanzee, Lizard, Rhesus monkey, Gorilla, Chinese hamster, Orangutan, Elephant 
Immunogen	Synthetic peptide corresponding to a region between residue 1 and 50 of human TCF12 (NP_996919.1).
Positive control	Whole cell lysate from HeLa cells.
General notes	<p>The Life Science industry has been in the grips of a reproducibility crisis for a number of years. Abcam is leading the way in addressing this with our range of recombinant monoclonal antibodies and knockout edited cell lines for gold-standard validation. Please check that this product meets your needs before purchasing.</p> <p>If you have any questions, special requirements or concerns, please send us an inquiry and/or contact our Support team ahead of purchase. Recommended alternatives for this product can be found below, along with publications, customer reviews and Q&As</p>

Properties

Form	Liquid
Storage instructions	Shipped at 4°C. Upon delivery aliquot and store at -20°C. Avoid freeze / thaw cycles.
Storage buffer	pH: 7 Preservative: 0.09% Sodium azide Constituents: 1.815% Tris, 1.764% Sodium citrate, 0.021% PBS
Purity	Immunogen affinity purified
Clonality	Polyclonal
Isotype	IgG

Applications

The Abpromise guarantee

Our **Abpromise guarantee** covers the use of ab70746 in the following tested applications.

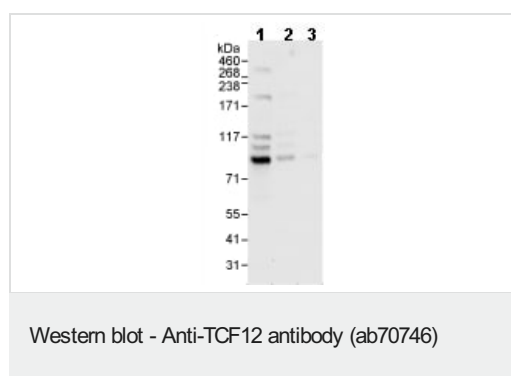
The application notes include recommended starting dilutions; optimal dilutions/concentrations should be determined by the end user.

Application	Abreviews	Notes
IP		Use at 2-5 µg/mg of lysate.
IHC-P		1/500 - 1/2000. Perform heat mediated antigen retrieval with Tris/EDTA buffer pH 9.0 before commencing with IHC staining protocol.
WB		1/2000 - 1/10000. Detects a band of approximately 85 kDa (predicted molecular weight: 73 kDa).

Target

Function	Binds specifically to oligomers of E-box motifs. May play important roles during development of the nervous system as well as in other organ systems.
Tissue specificity	Expressed in several tissues and cell types including skeletal muscle, thymus, and a B-cell line.
Sequence similarities	Contains 1 basic helix-loop-helix (bHLH) domain.
Domain	the 9aaTAD motif is a transactivation domain present in a large number of yeast and animal transcription factors.
Post-translational modifications	Phosphorylated upon DNA damage, probably by ATM or ATR.
Cellular localization	Nucleus.

Images



All lanes : Anti-TCF12 antibody (ab70746) at 1/10000 dilution

Lane 1 : HeLa whole cell lysate at 50 µg

Lane 2 : HeLa whole cell lysate at 15 µg

Lane 3 : HeLa whole cell lysate at 5 µg

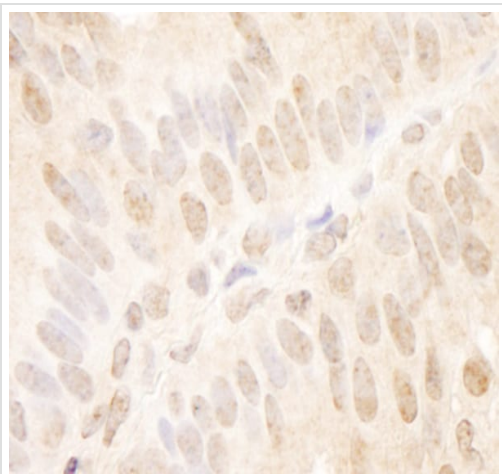
Developed using the ECL technique.

Predicted band size: 73 kDa

Observed band size: 85 kDa

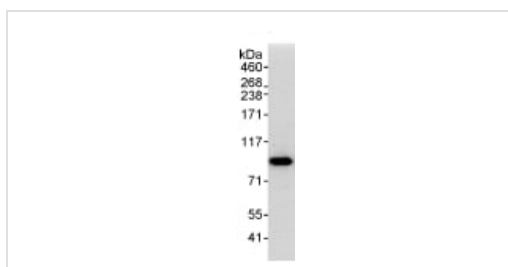
Additional bands at: 100 kDa, 120 kDa, 190 kDa. We are unsure as to the identity of these extra bands.

Exposure time: 30 seconds



Immunohistochemistry (Formalin/PFA-fixed paraffin-embedded sections) analysis of human breast carcinoma tissue labelling TCF12 with ab70746 at 1/1000 (1 µg/ml). Detection: DAB.

Immunohistochemistry (Formalin/PFA-fixed paraffin-embedded sections) - Anti-TCF12 antibody (ab70746)



1mg whole cell lysate from HeLa cells was immunoprecipitated with ab70746 at 3 µg/mg lysate. For the subsequent western blot, 20% of the immunoprecipitate was loaded per lane, and probed with **ab707345** at 1 µg/ml. Detection: chemiluminescence with exposure time of 10 seconds

Immunoprecipitation - Anti-TCF12 antibody (ab70746)

Please note: All products are "FOR RESEARCH USE ONLY. NOT FOR USE IN DIAGNOSTIC PROCEDURES"

Our Abpromise to you: Quality guaranteed and expert technical support

- Replacement or refund for products not performing as stated on the datasheet
- Valid for 12 months from date of delivery
- Response to your inquiry within 24 hours
- We provide support in Chinese, English, French, German, Japanese and Spanish
- Extensive multi-media technical resources to help you
- We investigate all quality concerns to ensure our products perform to the highest standards

If the product does not perform as described on this datasheet, we will offer a refund or replacement. For full details of the Abpromise, please visit <https://www.abcam.com/abpromise> or contact our technical team.

Terms and conditions

- Guarantee only valid for products bought direct from Abcam or one of our authorized distributors