


Anti-TCF3 / E2A (phospho T355) antibody ab85772

1 Image

Overview

Product name	Anti-TCF3 / E2A (phospho T355) antibody
Description	Rabbit polyclonal to TCF3 / E2A (phospho T355)
Host species	Rabbit
Tested applications	Suitable for: WB
Species reactivity	Reacts with: Human Predicted to work with: Mouse, Rat, Hamster, Dog 
Immunogen	Synthetic peptide corresponding to Human TCF3/ E2A aa 350-450 conjugated to keyhole limpet haemocyanin. (Peptide available as ab103576)
Positive control	This antibody gave a positive signal in both HeLa and HepG2 whole cell lysates.
General notes	<p>The Life Science industry has been in the grips of a reproducibility crisis for a number of years. Abcam is leading the way in addressing this with our range of recombinant monoclonal antibodies and knockout edited cell lines for gold-standard validation. Please check that this product meets your needs before purchasing.</p> <p>If you have any questions, special requirements or concerns, please send us an inquiry and/or contact our Support team ahead of purchase. Recommended alternatives for this product can be found below, along with publications, customer reviews and Q&As</p>

Properties

Form	Liquid
Storage instructions	Shipped at 4°C. Store at +4°C short term (1-2 weeks). Upon delivery aliquot. Store at -20°C or -80°C. Avoid freeze / thaw cycle.
Storage buffer	pH: 7.40 Preservative: 0.02% Sodium azide Constituent: PBS Batches of this product that have a concentration < 1mg/ml may have BSA added as a stabilising agent. If you would like information about the formulation of a specific lot, please contact our scientific support team who will be happy to help.
Purity	Immunogen affinity purified

Clonality	Polyclonal
Isotype	IgG

Applications

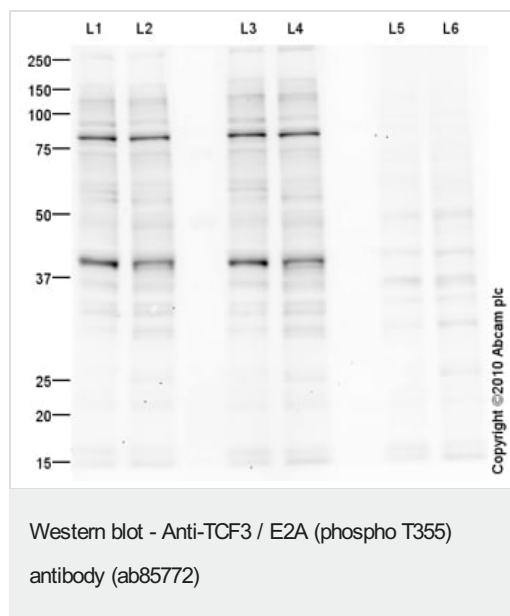
The Abpromise guarantee Our **Abpromise guarantee** covers the use of ab85772 in the following tested applications. The application notes include recommended starting dilutions; optimal dilutions/concentrations should be determined by the end user.

Application	Abreviews	Notes
WB		Use a concentration of 1 µg/ml. Detects a band of approximately 80 kDa (predicted molecular weight: 68 kDa).

Target

Function	Heterodimers between TCF3 and tissue-specific basic helix-loop-helix (bHLH) proteins play major roles in determining tissue-specific cell fate during embryogenesis, like muscle or early B-cell differentiation. Dimers bind DNA on E-box motifs: 5'-CANNTG-3'. Binds to the kappa-E2 site in the kappa immunoglobulin gene enhancer.
Involvement in disease	Note=Chromosomal aberrations involving TCF3 are cause of forms of pre-B-cell acute lymphoblastic leukemia (B-ALL). Translocation t(1;19)(q23;p13.3) with PBX1; Translocation t(17;19)(q22;p13.3) with HLF. Inversion inv(19)(p13;q13) with TFPT.
Sequence similarities	Contains 1 basic helix-loop-helix (bHLH) domain.
Domain	the 9aaTAD motif is a transactivation domain present in a large number of yeast and animal transcription factors.
Post-translational modifications	Phosphorylated following NGF stimulation.
Cellular localization	Nucleus.

Images



All lanes : Anti-TCF3 / E2A (phospho T355) antibody (ab85772) at 1 µg/ml

Lane 1 : HeLa (Human epithelial carcinoma cell line) Whole Cell Lysate

Lane 2 : HepG2 (Human hepatocellular liver carcinoma cell line) Whole Cell Lysate

Lane 3 : HeLa (Human epithelial carcinoma cell line) Whole Cell Lysate with Human TCF3 / E2A peptide (**ab118180**) at 1 µg/ml

Lane 4 : HepG2 (Human hepatocellular liver carcinoma cell line) Whole Cell Lysate with Human TCF3 / E2A peptide (**ab118180**) at 1 µg/ml

Lane 5 : HeLa (Human epithelial carcinoma cell line) Whole Cell Lysate with Human TCF3 / E2A (phospho T355) peptide (**ab103576**) at 1 µg/ml

Lane 6 : HepG2 (Human hepatocellular liver carcinoma cell line) Whole Cell Lysate with Human TCF3 / E2A (phospho T355) peptide (**ab103576**) at 1 µg/ml

Lysates/proteins at 10 µg per lane.

Secondary

All lanes : Goat Anti-Rabbit IgG H&L (HRP) preadsorbed (**ab97080**) at 1/5000 dilution

Developed using the ECL technique.

Performed under reducing conditions.

Predicted band size: 68 kDa

Observed band size: 80 kDa

Additional bands at: 40 kDa. We are unsure as to the identity of these extra bands.

Exposure time: 20 minutes

Please note: All products are "FOR RESEARCH USE ONLY. NOT FOR USE IN DIAGNOSTIC PROCEDURES"

Our Abpromise to you: Quality guaranteed and expert technical support

- Replacement or refund for products not performing as stated on the datasheet
- Valid for 12 months from date of delivery
- Response to your inquiry within 24 hours

- We provide support in Chinese, English, French, German, Japanese and Spanish
- Extensive multi-media technical resources to help you
- We investigate all quality concerns to ensure our products perform to the highest standards

If the product does not perform as described on this datasheet, we will offer a refund or replacement. For full details of the Abpromise, please visit <https://www.abcam.com/abpromise> or contact our technical team.

Terms and conditions

- Guarantee only valid for products bought direct from Abcam or one of our authorized distributors