

Product datasheet

Anti-Tcl1 antibody [1-21] ab91211

[1 Image](#)

Overview

Product name	Anti-Tcl1 antibody [1-21]
Description	Mouse monoclonal [1-21] to Tcl1
Host species	Mouse
Tested applications	Suitable for: Flow Cyt
Species reactivity	Reacts with: Human
Immunogen	Synthetic peptide (Human)
Positive control	Daudi cells
General notes	<p>The Life Science industry has been in the grips of a reproducibility crisis for a number of years. Abcam is leading the way in addressing this with our range of recombinant monoclonal antibodies and knockout edited cell lines for gold-standard validation. Please check that this product meets your needs before purchasing.</p> <p>If you have any questions, special requirements or concerns, please send us an inquiry and/or contact our Support team ahead of purchase. Recommended alternatives for this product can be found below, along with publications, customer reviews and Q&As</p>

Properties

Form	Liquid
Storage instructions	Shipped at 4°C. Store at +4°C short term (1-2 weeks). Store at -20°C or -80°C. Avoid freeze / thaw cycle.
Storage buffer	pH: 7.20 Preservative: 0.09% Sodium azide Constituent: PBS
Purity	Protein A purified
Clonality	Monoclonal
Clone number	1-21
Isotype	IgG2b
Light chain type	kappa

Applications

Applications

The Abpromise guarantee Our **Abpromise guarantee** covers the use of ab91211 in the following tested applications. The application notes include recommended starting dilutions; optimal dilutions/concentrations should be determined by the end user.

Application	Abreviews	Notes
Flow Cyt		

Application notes

Flow Cyt: Use 0.5µg for 10⁶ cells in 100µl volume.
IHC-P: Use at an assay dependent dilution.
IP: Use at an assay dependent dilution.
WB: Use at an assay dependent dilution. Predicted molecular weight: 13 kDa.

Not yet tested in other applications.
Optimal dilutions/concentrations should be determined by the end user.

Target

Function

Enhances the phosphorylation and activation of AKT1, AKT2 and AKT3. Promotes nuclear translocation of AKT1. Enhances cell proliferation, stabilizes mitochondrial membrane potential and promotes cell survival.

Tissue specificity

Restricted in the T-cell lineage to immature thymocytes and activated peripheral lymphocytes. Preferentially expressed early in T- and B-lymphocyte differentiation.

Involvement in disease

Note=Chromosomal aberrations activating TCL1A are found in chronic T-cell leukemias (T-CLL). Translocation t(14;14)(q11;q32); translocation t(7;14)(q35;q32); inversion inv(14)(q11;q32) that involves the T-cell receptor alpha/delta loci.

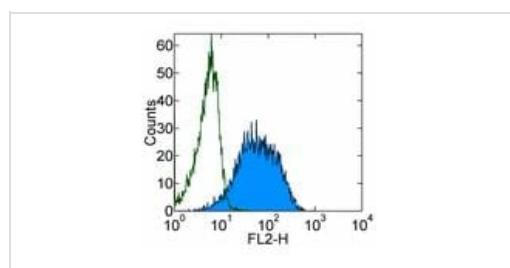
Sequence similarities

Belongs to the TCL1 family.

Cellular localization

Cytoplasm. Nucleus. Microsome. Endoplasmic reticulum. Microsomal fraction.

Images



Flow Cytometry - Anti-Tcl1 antibody [1-21]
(ab91211)

Staining of Daudi cells with ab91211 at 0.25 µg (blue histogram), or purified Mouse IgG2b, isotype control at 0.25 µg (green histogram), followed by treatment with Biotin anti-Mouse IgG and Phycoerythrin (PE) Streptavidin. Total viable cells were used for analysis.

Please note: All products are "FOR RESEARCH USE ONLY. NOT FOR USE IN DIAGNOSTIC PROCEDURES"

Our Abpromise to you: Quality guaranteed and expert technical support

- Replacement or refund for products not performing as stated on the datasheet
- Valid for 12 months from date of delivery
- Response to your inquiry within 24 hours

- We provide support in Chinese, English, French, German, Japanese and Spanish
- Extensive multi-media technical resources to help you
- We investigate all quality concerns to ensure our products perform to the highest standards

If the product does not perform as described on this datasheet, we will offer a refund or replacement. For full details of the Abpromise, please visit <https://www.abcam.com/abpromise> or contact our technical team.

Terms and conditions

- Guarantee only valid for products bought direct from Abcam or one of our authorized distributors