

Product datasheet

Anti-TCP1 alpha/CCTA antibody [EPR4081] ab92587

Recombinant RabMAb

[1 References](#) [5 Images](#)

Overview

Product name	Anti-TCP1 alpha/CCTA antibody [EPR4081]
Description	Rabbit monoclonal [EPR4081] to TCP1 alpha/CCTA
Host species	Rabbit
Tested applications	Suitable for: ICC/IF, WB, IHC-P, IP Unsuitable for: Flow Cyt
Species reactivity	Reacts with: Human
Immunogen	Synthetic peptide. This information is proprietary to Abcam and/or its suppliers.
Positive control	WB: HeLa, ECV-304, A459 and 293T cell lysates. IHC: Human colon tissue, Human kidney tissue. ICC: HeLa cells. IP: HeLa lysate.
General notes	<p>This product is a recombinant monoclonal antibody, which offers several advantages including:</p> <ul style="list-style-type: none"> - High batch-to-batch consistency and reproducibility - Improved sensitivity and specificity - Long-term security of supply - Animal-free production <p>For more information see here.</p> <p>Our RabMAb[®] technology is a patented hybridoma-based technology for making rabbit monoclonal antibodies. For details on our patents, please refer to RabMAb[®] patents.</p> <p>Mouse, Rat: We have preliminary internal testing data to indicate this antibody may not react with these species. Please contact us for more information.</p>

Properties

Form	Liquid
Storage instructions	Shipped at 4°C. Store at -20°C. Stable for 12 months at -20°C.
Storage buffer	pH: 7.20 Preservative: 0.05% Sodium azide Constituents: 0.1% BSA, 40% Glycerol (glycerin, glycerine), 9.85% Tris glycine, 50% Tissue culture supernatant
Purity	Tissue culture supernatant

Clonality	Monoclonal
Clone number	EPR4081
Isotype	IgG

Applications

The Abpromise guarantee Our **Abpromise guarantee** covers the use of ab92587 in the following tested applications. The application notes include recommended starting dilutions; optimal dilutions/concentrations should be determined by the end user.

Application	Abreviews	Notes
ICC/IF		
WB		
IHC-P		
IP		

Application notes

ICC: 1/250 - 1/500.
 IHC-P: 1/100 - 1/250. Perform heat mediated antigen retrieval via the pressure cooker method before commencing with IHC staining protocol. The use of an HRP/AP polymerized antibody is recommended for a secondary antibody.
 IP: 1/10 - 1/100.
 WB: 1/10000 - 1/50000. Predicted molecular weight: 60 kDa.

Is unsuitable for Flow Cyt.

Not yet tested in other applications.
 Optimal dilutions/concentrations should be determined by the end user.

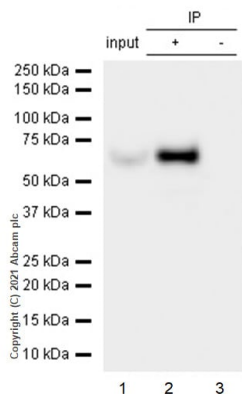
Target

Function Molecular chaperone; assists the folding of proteins upon ATP hydrolysis. As part of the BBS/CCT complex may play a role in the assembly of BBSome, a complex involved in ciliogenesis regulating transports vesicles to the cilia. Known to play a role, in vitro, in the folding of actin and tubulin.

Sequence similarities Belongs to the TCP-1 chaperonin family.

Cellular localization Cytoplasm. Cytoplasm > cytoskeleton > centrosome.

Images



Immunoprecipitation - Anti-TCP1 alpha/CCTA antibody [EPR4081] (ab92587)

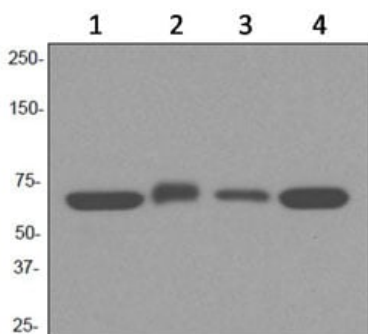
TCP1 alpha/CCTA was immunoprecipitated from 0.35 mg HeLa (Human cervix adenocarcinoma epithelial cell) whole cell lysate 10 µg with 92587 at 1/50 dilution (2µg). VeriBlot for IP Detection Reagent (HRP)([ab131366](#)) was used at 1/5000 dilution.

Lane 1: HeLa (Human cervix adenocarcinoma epithelial cell) whole cell lysate 10 µg

Lane 2: ab92587 IP in HeLa whole cell lysate

Lane 3: Rabbit monoclonal IgG ([ab172730](#)) instead of ab92587 in HeLa whole cell lysate

Blocking and dilution buffer and concentration: 5% NFD/MTBST.



Western blot - Anti-TCP1 alpha/CCTA antibody [EPR4081] (ab92587)

All lanes : Anti-TCP1 alpha/CCTA antibody [EPR4081] (ab92587) at 1/10000 dilution

Lane 1 : HeLa cell lysate

Lane 2 : ECV-304 cell lysate

Lane 3 : A549 cell lysate

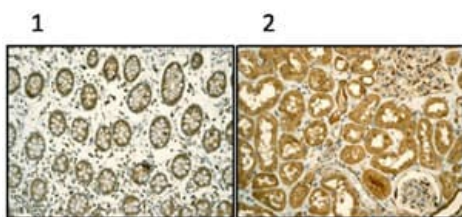
Lane 4 : 293T (Human embryonic kidney epithelial cell) cell lysate

Lysates/proteins at 10 µg per lane.

Secondary

All lanes : HRP labelled goat anti-rabbit at 1/2000 dilution

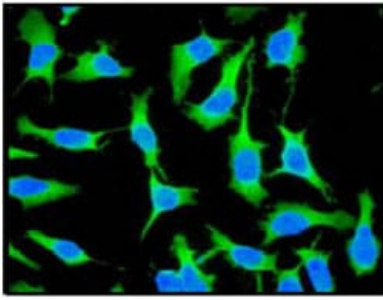
Predicted band size: 60 kDa



Immunohistochemistry (Formalin/PFA-fixed paraffin-embedded sections) - Anti-TCP1 alpha/CCTA antibody [EPR4081] (ab92587)

ab92587 at 1/100 dilution staining TCP1 alpha/CCTA in (1) Human colon tissue and (2) Human kidney tissue by Immunohistochemistry Formalin-fixed, Paraffin-embedded tissue. Detection: DAB staining.

Perform heat mediated antigen retrieval via the pressure cooker method before commencing with IHC staining protocol.



ab92587 at 1/250 dilution staining TCP1 alpha/CCTA in HeLa cells by Immunofluorescence.

Immunocytochemistry/ Immunofluorescence - Anti-TCP1 alpha/CCTA antibody [EPR4081] (ab92587)

Why choose a recombinant antibody?



Research with confidence
Consistent and reproducible results



Long-term and scalable supply
Recombinant technology



Success from the first experiment
Confirmed specificity



Ethical standards compliant
Animal-free production

Anti-TCP1 alpha/CCTA antibody [EPR4081] (ab92587)

Please note: All products are "FOR RESEARCH USE ONLY. NOT FOR USE IN DIAGNOSTIC PROCEDURES"

Our Abpromise to you: Quality guaranteed and expert technical support

- Replacement or refund for products not performing as stated on the datasheet
- Valid for 12 months from date of delivery
- Response to your inquiry within 24 hours
- We provide support in Chinese, English, French, German, Japanese and Spanish
- Extensive multi-media technical resources to help you
- We investigate all quality concerns to ensure our products perform to the highest standards

If the product does not perform as described on this datasheet, we will offer a refund or replacement. For full details of the Abpromise, please visit <https://www.abcam.com/abpromise> or contact our technical team.

Terms and conditions

- Guarantee only valid for products bought direct from Abcam or one of our authorized distributors