




Product datasheet

Anti-TCP1 theta antibody ab176691

[2 Images](#)

Overview

Product name	Anti-TCP1 theta antibody
Description	Rabbit polyclonal to TCP1 theta
Host species	Rabbit
Tested applications	Suitable for: WB, IP
Species reactivity	Reacts with: Mouse, Human Predicted to work with: Chicken, Cow, Cynomolgus monkey, Orangutan 
Immunogen	Synthetic peptide within Human TCP1 theta aa 498-548. The exact sequence is proprietary. Sequence: LDTYLGKYWAIKLATNAAVTVLRVDQIIIMAKPAGGPKPPSG KKDWDDDQN D Database link: P50990  Run BLAST with  Run BLAST with
Positive control	HeLa, 293T, Jurkat or Mouse NIH3T3 lysate.
General notes	<p>The Life Science industry has been in the grips of a reproducibility crisis for a number of years. Abcam is leading the way in addressing this with our range of recombinant monoclonal antibodies and knockout edited cell lines for gold-standard validation. Please check that this product meets your needs before purchasing.</p> <p>If you have any questions, special requirements or concerns, please send us an inquiry and/or contact our Support team ahead of purchase. Recommended alternatives for this product can be found below, along with publications, customer reviews and Q&As</p>

Properties

Form	Liquid
Storage instructions	Shipped at 4°C. Store at +4°C short term (1-2 weeks). Upon delivery aliquot. Store at -20°C long term. Avoid freeze / thaw cycle.
Storage buffer	pH: 6.8 Preservative: 0.09% Sodium azide Constituents: 0.1% BSA, 99% Tris buffered saline pH: 7 to 8

Purity	Immunogen affinity purified
Clonality	Polyclonal
Isotype	IgG

Applications

The Abpromise guarantee Our **Abpromise guarantee** covers the use of ab176691 in the following tested applications. The application notes include recommended starting dilutions; optimal dilutions/concentrations should be determined by the end user.

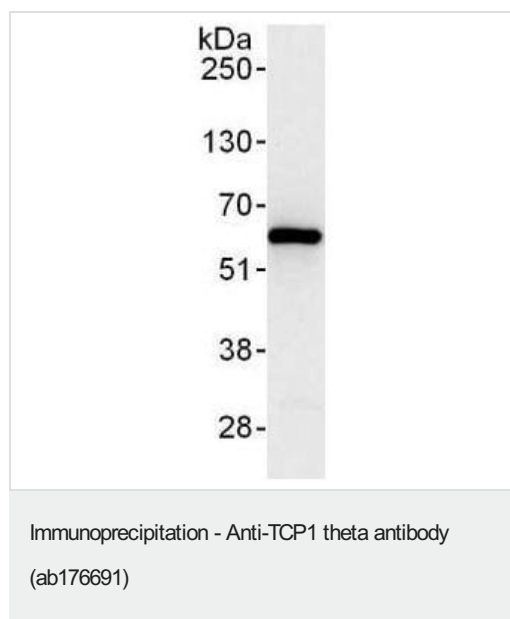
Application	Abreviews	Notes
WB		1/2000 - 1/10000. Predicted molecular weight: 60 kDa.
IP		Use at 2-10 µg/mg of lysate.

Target

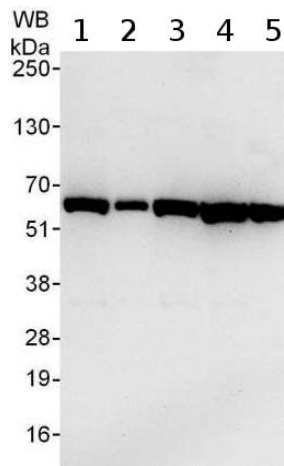
Relevance TCP1 theta is the theta polypeptide of the CCT chaperonin molecule complex. The intact CCT complex is composed of eight polypeptides in a double ring. TCP1 theta is a molecular chaperone that assists the folding of proteins upon ATP hydrolysis. CCT is important within cells in aiding the folding of proteins including actin, tubulin and the VHL tumour suppressor protein.

Cellular localization Cytoplasm. Cytoplasm; cytoskeleton; centrosome

Images



Detection of Human TCP1 theta by Western Blot of Immunoprecipitates. 1 mg for IP; 20% of IP HeLa whole cell lysate loaded. ab176691 used for IP at 6 µg/mg lysate. For blotting immunoprecipitated TCP1 theta, ab176691 was used at 0.04 µg/ml.



Western blot - Anti-TCP1 theta antibody (ab176691)

All lanes : Anti-TCP1 theta antibody (ab176691) at 0.04 µg/ml

Lane 1 : HeLa lysate at 50 µg

Lane 2 : HeLa lysate at 15 µg

Lane 3 : 293T lysate at 50 µg

Lane 4 : Jurkat lysate at 50 µg

Lane 5 : Mouse NIH3T3 lysate at 50 µg

Developed using the ECL technique.

Predicted band size: 60 kDa

Exposure time: 10 seconds

Please note: All products are "FOR RESEARCH USE ONLY. NOT FOR USE IN DIAGNOSTIC PROCEDURES"

Our Abpromise to you: Quality guaranteed and expert technical support

- Replacement or refund for products not performing as stated on the datasheet
- Valid for 12 months from date of delivery
- Response to your inquiry within 24 hours
- We provide support in Chinese, English, French, German, Japanese and Spanish
- Extensive multi-media technical resources to help you
- We investigate all quality concerns to ensure our products perform to the highest standards

If the product does not perform as described on this datasheet, we will offer a refund or replacement. For full details of the Abpromise, please visit <https://www.abcam.com/abpromise> or contact our technical team.

Terms and conditions

- Guarantee only valid for products bought direct from Abcam or one of our authorized distributors