


Product datasheet

Anti-TCTP antibody **ab37506**

★★★★★ [4 Abreviews](#) [27 References](#) [4 Images](#)

Overview

Product name	Anti-TCTP antibody
Description	Rabbit polyclonal to TCTP
Host species	Rabbit
Tested applications	Suitable for: ICC/IF, WB
Species reactivity	Reacts with: Mouse, Rat, Human Predicted to work with: Rabbit, Chicken, Cow, Pig 
Immunogen	Synthetic peptide corresponding to Human TCTP aa 50-150 conjugated to keyhole limpet haemocyanin. (Peptide available as ab37505)
Positive control	ICC/IF: A431 and HeLa cells. WB: HeLa, NIH/3T3, MEF1, PC12. Jurkat, A431, HEK-293, HepG2, MCF7 and U2OS whole cell lysate. Mouse pancreas, ovary, spinal cord and testis tissue lysate. Rat liver tissue lysate.
General notes	<p>The Life Science industry has been in the grips of a reproducibility crisis for a number of years. Abcam is leading the way in addressing this with our range of recombinant monoclonal antibodies and knockout edited cell lines for gold-standard validation. Please check that this product meets your needs before purchasing.</p> <p>If you have any questions, special requirements or concerns, please send us an inquiry and/or contact our Support team ahead of purchase. Recommended alternatives for this product can be found below, along with publications, customer reviews and Q&As</p>

Properties

Form	Liquid
Storage instructions	Shipped at 4°C. Store at +4°C short term (1-2 weeks). Upon delivery aliquot. Store at -20°C or -80°C. Avoid freeze / thaw cycle.
Storage buffer	pH: 7.40 Preservative: 0.02% Sodium azide Constituent: PBS

Batches of this product that have a concentration < 1mg/ml may have BSA added as a stabilising agent. If you would like information about the formulation of a specific lot, please contact our scientific support team who will be happy to help.

Purity	Immunogen affinity purified
Clonality	Polyclonal
Isotype	IgG

Applications

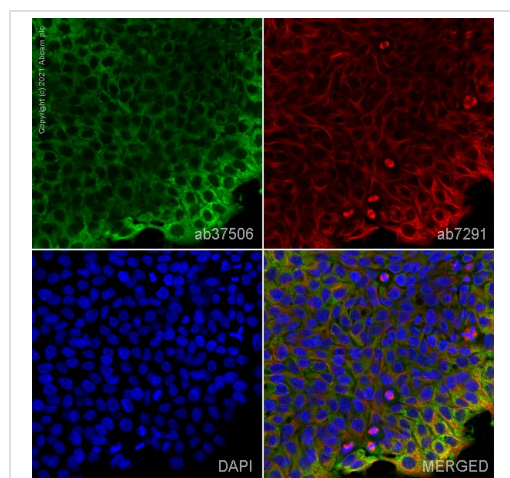
The Abpromise guarantee Our **Abpromise guarantee** covers the use of ab37506 in the following tested applications. The application notes include recommended starting dilutions; optimal dilutions/concentrations should be determined by the end user.

Application	Abreviews	Notes
ICC/IF	★★★★★ (1)	Use a concentration of 1 µg/ml.
WB	★★★★★ (1)	1/250. Detects a band of approximately 22 kDa (predicted molecular weight: 20 kDa).

Target

Function	Involved in calcium binding and microtubule stabilization.
Tissue specificity	Found in several healthy and tumoral cells including erythrocytes, hepatocytes, macrophages, platelets, keratinocytes, erythroleukemia cells, gliomas, melanomas, hepatoblastomas, and lymphomas. It cannot be detected in kidney and renal cell carcinoma (RCC). Expressed in placenta and prostate.
Sequence similarities	Belongs to the TCTP family.
Cellular localization	Cytoplasm.

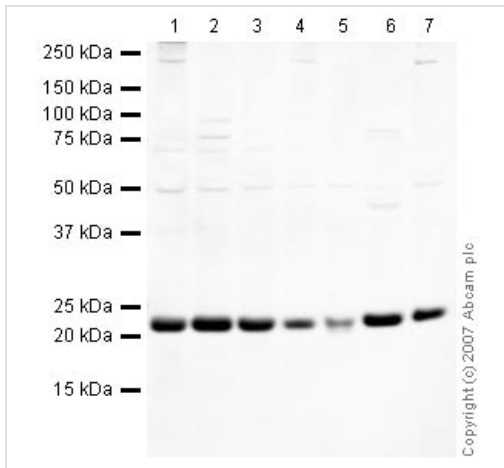
Images



Immunocytochemistry/ Immunofluorescence - Anti-TCTP antibody (ab37506)

ab37506 staining TCTP in A431 cells. The cells were fixed with 100% methanol (5 min), permeabilized with 0.1% PBS-Triton X-100 for 5 minutes and then blocked with 1% BSA/10% normal goat serum/0.3M glycine in 0.1%PBS-Tween for 1h. The cells were then incubated overnight at 4°C with ab37506 at 1µg/ml and **ab7291**, Mouse monoclonal [DM1A] to alpha Tubulin - Loading Control. Cells were then incubated with **ab150081**, Goat polyclonal Secondary Antibody to Rabbit IgG - H&L (Alexa Fluor® 488), pre-adsorbed at 1/1000 dilution (shown in green) and **ab150120**, Goat polyclonal Secondary Antibody to Mouse IgG - H&L (Alexa Fluor® 594), pre-adsorbed at 1/1000 dilution (shown in pseudocolour red). Nuclear DNA was labelled with DAPI (shown in blue).

Image was acquired with a high-content analyser (Operetta CLS, Perkin Elmer) and a maximum intensity projection of confocal sections is shown.



Western blot - Anti-TCTP antibody (ab37506)

All lanes : Anti-TCTP antibody (ab37506) at 1/250 dilution

Lane 1 : HeLa (Human epithelial carcinoma cell line) Whole Cell Lysate

Lane 2 : Jurkat whole cell lysate ([ab7899](#))

Lane 3 : A-431 whole cell lysate ([ab7909](#))

Lane 4 : HEK-293 whole cell lysate ([ab7902](#))

Lane 5 : Hep G2 whole cell lysate ([ab7900](#))

Lane 6 : MCF-7 (Human breast adenocarcinoma cell line) Whole Cell Lysate

Lane 7 : U2OS (Human osteosarcoma cell line) Whole Cell Lysate

Lysates/proteins at 10 µg per lane.

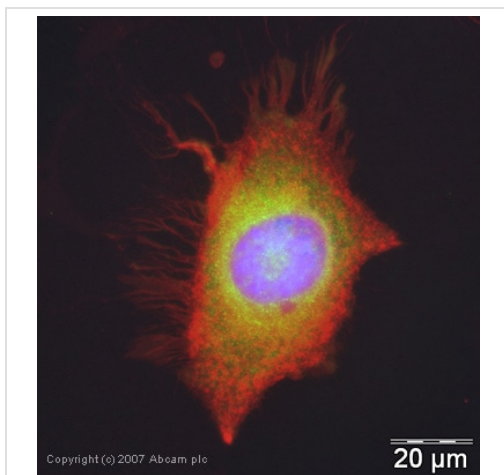
Secondary

All lanes : IRDye 680 Conjugated Goat Anti-Rabbit IgG (H+L) at 1/15000 dilution

Performed under reducing conditions.

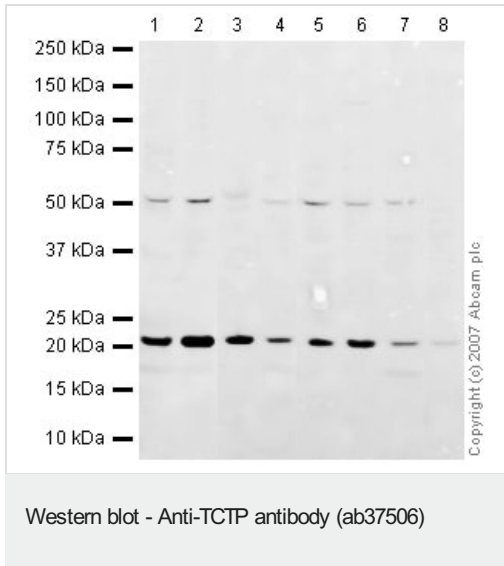
Predicted band size: 20 kDa

Observed band size: 22 kDa



Immunocytochemistry/ Immunofluorescence - Anti-TCTP antibody (ab37506)

ICC/IF image of ab37506 stained human HeLa cells. The cells were MeOH fixed (5 min), permeabilised in TBS-T (20 min) and incubated with the antibody (ab37506, 5µg/ml) for 1h at room temperature. 1%BSA / 10% normal serum / 0.3M glycine was used to quench autofluorescence and block non-specific protein-protein interactions. The secondary antibody (green) was Alexa Fluor® 488 goat anti-rabbit IgG (H+L) used at a 1/1000 dilution for 1h. Alexa Fluor® 594 WGA was used to label plasma membranes (red). DAPI was used to stain the cell nuclei (blue).



All lanes : Anti-TCTP antibody (ab37506) at 1 µg/ml

Lane 1 : NIH/3T3 whole cell lysate ([ab7179](#))

Lane 2 : MEF1 (Mouse embryonic fibroblast cell line) Whole Cell Lysate

Lane 3 : Mouse pancreas tissue lysate - total protein ([ab29363](#))

Lane 4 : Testis (Mouse) Tissue Lysate - normal tissue

Lane 5 : Spinal Cord (Mouse) Tissue Lysate

Lane 6 : Ovary (Mouse) Tissue Lysate - normal tissue

Lane 7 : PC12 (Rat adrenal pheochromocytoma cell line) Whole Cell Lysate

Lane 8 : Liver (Rat) Tissue Lysate

Lysates/proteins at 10 µg per lane.

Secondary

All lanes : IRDye 680 Conjugated Goat Anti-Rabbit IgG (H+L) at 1/10000 dilution

Performed under reducing conditions.

Predicted band size: 20 kDa

Observed band size: 22 kDa

Additional bands at: 52 kDa. We are unsure as to the identity of these extra bands.

Please note: All products are "FOR RESEARCH USE ONLY. NOT FOR USE IN DIAGNOSTIC PROCEDURES"

Our Abpromise to you: Quality guaranteed and expert technical support

- Replacement or refund for products not performing as stated on the datasheet
- Valid for 12 months from date of delivery
- Response to your inquiry within 24 hours
- We provide support in Chinese, English, French, German, Japanese and Spanish
- Extensive multi-media technical resources to help you
- We investigate all quality concerns to ensure our products perform to the highest standards

If the product does not perform as described on this datasheet, we will offer a refund or replacement. For full details of the Abpromise,

please visit <https://www.abcam.com/abpromise> or contact our technical team.

Terms and conditions

- Guarantee only valid for products bought direct from Abcam or one of our authorized distributors