

Anti-TDRD6 antibody ab88570

[1 Image](#)

Overview

Product name	Anti-TDRD6 antibody
Description	Rabbit polyclonal to TDRD6
Host species	Rabbit
Tested applications	Suitable for: WB
Species reactivity	Reacts with: Human
Immunogen	Synthetic peptide corresponding to Human TDRD6 aa 1700-1800 conjugated to keyhole limpet haemocyanin. (Peptide available as ab104207)
Positive control	This antibody gave a positive signal in human testis tissue lysate.
General notes	<p>The Life Science industry has been in the grips of a reproducibility crisis for a number of years. Abcam is leading the way in addressing this with our range of recombinant monoclonal antibodies and knockout edited cell lines for gold-standard validation. Please check that this product meets your needs before purchasing.</p> <p>If you have any questions, special requirements or concerns, please send us an inquiry and/or contact our Support team ahead of purchase. Recommended alternatives for this product can be found below, along with publications, customer reviews and Q&As</p>

Properties

Form	Liquid
Storage instructions	Shipped at 4°C. Store at +4°C short term (1-2 weeks). Upon delivery aliquot. Store at -20°C or -80°C. Avoid freeze / thaw cycle.
Storage buffer	pH: 7.40 Preservative: 0.02% Sodium azide Constituent: PBS Batches of this product that have a concentration < 1mg/ml may have BSA added as a stabilising agent. If you would like information about the formulation of a specific lot, please contact our scientific support team who will be happy to help.
Purity	Immunogen affinity purified
Clonality	Polyclonal

Isotype

IgG

Applications

The Abpromise guarantee

Our **Abpromise guarantee** covers the use of ab88570 in the following tested applications.

The application notes include recommended starting dilutions; optimal dilutions/concentrations should be determined by the end user.

Application	Abreviews	Notes
WB		Use a concentration of 1 µg/ml. Detects a band of approximately 236 kDa (predicted molecular weight: 236 kDa).

Target

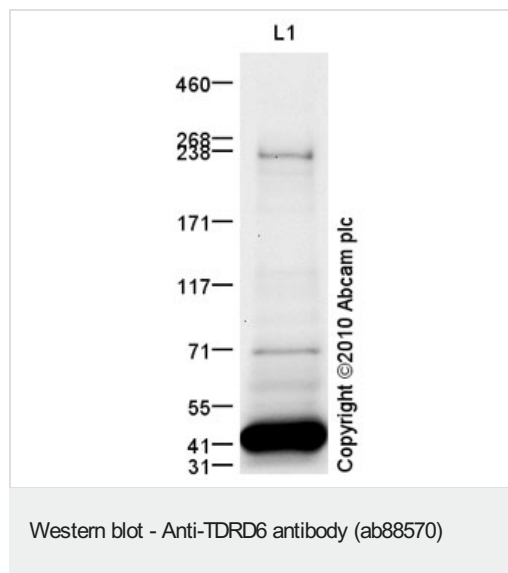
Relevance

TDRD6 (Tudor domain containing protein 6) plays a role in spermiogenesis and chromatoid body formation, and in the expression of precursor and mature miRNA. TDRD6 is found in an mRNP complex with TDRD1, TDRD7 and DDX4. It is also found in complex with PWIL1 and PWIL2. TDRD6 localises to the chromatoid body of spermatids (termed processing bodies or P-bodies) in somatic cells.

Cellular localization

Cytoplasmic; localises to chromatoid bodies in spermatids

Images



Anti-TDRD6 antibody (ab88570) at 1 µg/ml + Human testis tissue lysate - total protein ([ab30257](#)) at 10 µg

Secondary

Goat Anti-Rabbit IgG H&L (HRP) preadsorbed ([ab97080](#)) at 1/5000 dilution

Developed using the ECL technique.

Performed under reducing conditions.

Predicted band size: 236 kDa

Observed band size: 236 kDa

Additional bands at: 40 kDa, 71 kDa. We are unsure as to the identity of these extra bands.

Exposure time: 12 minutes

Please note: All products are "FOR RESEARCH USE ONLY. NOT FOR USE IN DIAGNOSTIC PROCEDURES"

Our Abpromise to you: Quality guaranteed and expert technical support

- Replacement or refund for products not performing as stated on the datasheet
- Valid for 12 months from date of delivery
- Response to your inquiry within 24 hours

- We provide support in Chinese, English, French, German, Japanese and Spanish
- Extensive multi-media technical resources to help you
- We investigate all quality concerns to ensure our products perform to the highest standards

If the product does not perform as described on this datasheet, we will offer a refund or replacement. For full details of the Abpromise, please visit <https://www.abcam.com/abpromise> or contact our technical team.

Terms and conditions

- Guarantee only valid for products bought direct from Abcam or one of our authorized distributors