




## Product datasheet

# Anti-Telethonin antibody ab228582

2 Images

### Overview

<b>Product name</b>	Anti-Telethonin antibody
<b>Description</b>	Rabbit polyclonal to Telethonin
<b>Host species</b>	Rabbit
<b>Tested applications</b>	<b>Suitable for:</b> WB, IHC-P
<b>Species reactivity</b>	<b>Reacts with:</b> Mouse, Human <b>Predicted to work with:</b> Rat, Cow, Dog, Pig, Rhesus monkey 
<b>Immunogen</b>	Recombinant full length protein corresponding to Human Telethonin aa 1 to the C-terminus. Database link: <a href="#">O15273</a>  <a href="#">Run BLAST with</a>  <a href="#">Run BLAST with</a>
<b>Positive control</b>	WB: Mouse muscle tissue extract. IHC-P: Huh7 xenograft tissue.
<b>General notes</b>	<p>The Life Science industry has been in the grips of a reproducibility crisis for a number of years. Abcam is leading the way in addressing this with our range of recombinant monoclonal antibodies and knockout edited cell lines for gold-standard validation. Please check that this product meets your needs before purchasing.</p> <p>If you have any questions, special requirements or concerns, please send us an inquiry and/or contact our Support team ahead of purchase. Recommended alternatives for this product can be found below, along with publications, customer reviews and Q&amp;As</p>

### Properties

<b>Form</b>	Liquid
<b>Storage instructions</b>	Shipped at 4°C. Store at +4°C short term (1-2 weeks). Upon delivery aliquot. Store at -20°C long term. Avoid freeze / thaw cycle.
<b>Storage buffer</b>	pH: 7.00 Preservative: 0.01% Thimerosal (merthiolate) Constituents: 1.21% Tris, 0.75% Glycine, 10% Glycerol (glycerin, glycerine)
<b>Purity</b>	Immunogen affinity purified
<b>Clonality</b>	Polyclonal
<b>Isotype</b>	IgG

## Applications

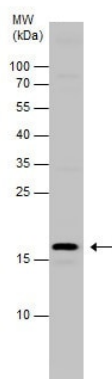
**The Abpromise guarantee** Our **Abpromise guarantee** covers the use of ab228582 in the following tested applications. The application notes include recommended starting dilutions; optimal dilutions/concentrations should be determined by the end user.

Application	Abreviews	Notes
WB		1/500 - 1/3000.
IHC-P		1/100 - 1/1000.

## Target

<b>Function</b>	Muscle assembly regulating factor. Mediates the antiparallel assembly of titin (TTN) molecules at the sarcomeric Z-disk.
<b>Tissue specificity</b>	Heart and skeletal muscle.
<b>Involvement in disease</b>	<p>Defects in TCAP are a cause of cardiomyopathy familial hypertrophic (CMH) [MIM:192600]; also designated FHC or HCM. Familial hypertrophic cardiomyopathy is a hereditary heart disorder characterized by ventricular hypertrophy, which is usually asymmetric and often involves the interventricular septum. The symptoms include dyspnea, syncope, collapse, palpitations, and chest pain. They can be readily provoked by exercise. The disorder has inter- and intrafamilial variability ranging from benign to malignant forms with high risk of cardiac failure and sudden cardiac death.</p> <p>Defects in TCAP are a cause of limb-girdle muscular dystrophy type 2G (LGMD2G) [MIM:601954]. LGMD2G is an autosomal recessive degenerative myopathy characterized by proximal and distal muscle weakness and atrophy in the limbs, dystrophic changes on muscle biopsy, and absence of telethonin. Cardiac muscle is involved in a subset of patients.</p> <p>Defects in TCAP are the cause of cardiomyopathy dilated type 1N (CMD1N) [MIM:607487]. Dilated cardiomyopathy is a disorder characterized by ventricular dilation and impaired systolic function, resulting in congestive heart failure and arrhythmia. Patients are at risk of premature death.</p>
<b>Cellular localization</b>	Cytoplasm > myofibril > sarcomere.

## Images

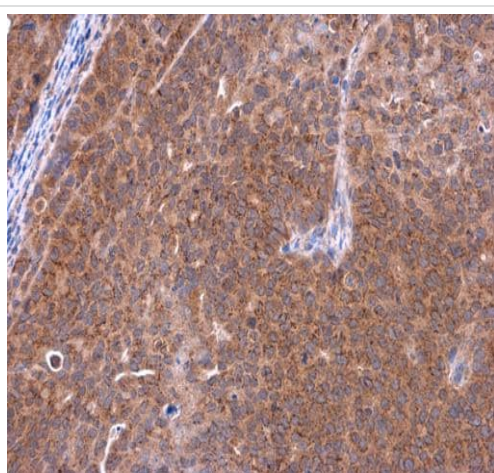


Western blot - Anti-Telethonin antibody (ab228582)

Anti-Telethonin antibody (ab228582) at 1/500 dilution + Mouse muscle tissue extract at 50 µg

Developed using the ECL technique.

15% SDS-PAGE



Immunohistochemistry (Formalin/PFA-fixed paraffin-embedded sections) - Anti-Telethonin antibody (ab228582)

Paraffin-embedded Huh7 (human) xenograft tissue stained for Telethonin with ab228582 at 1:500 dilution in immunohistochemical analysis.

**Please note:** All products are "FOR RESEARCH USE ONLY. NOT FOR USE IN DIAGNOSTIC PROCEDURES"

### Our Abpromise to you: Quality guaranteed and expert technical support

- Replacement or refund for products not performing as stated on the datasheet
- Valid for 12 months from date of delivery
- Response to your inquiry within 24 hours
- We provide support in Chinese, English, French, German, Japanese and Spanish
- Extensive multi-media technical resources to help you
- We investigate all quality concerns to ensure our products perform to the highest standards

If the product does not perform as described on this datasheet, we will offer a refund or replacement. For full details of the Abpromise, please visit <https://www.abcam.com/abpromise> or contact our technical team.

## Terms and conditions

---

- Guarantee only valid for products bought direct from Abcam or one of our authorized distributors