

# Anti-TELO2 antibody ab122722

[3 References](#) [3 Images](#)

## Overview

<b>Product name</b>	Anti-TELO2 antibody
<b>Description</b>	Rabbit polyclonal to TELO2
<b>Host species</b>	Rabbit
<b>Tested applications</b>	<b>Suitable for:</b> IHC-P, WB, ICC/IF
<b>Species reactivity</b>	<b>Reacts with:</b> Human
<b>Immunogen</b>	Recombinant Protein Epitope Signature Tag antigen, corresponding to amino acids 361 - 462 of Human TELO2 (Q9Y4R8).
<b>Positive control</b>	Human urinary bladder tissue RT-4, U-251 MG and Human tonsil lysate Human cell line U-251 MG
<b>General notes</b>	<p>The Life Science industry has been in the grips of a reproducibility crisis for a number of years. Abcam is leading the way in addressing this with our range of recombinant monoclonal antibodies and knockout edited cell lines for gold-standard validation. Please check that this product meets your needs before purchasing.</p> <p>If you have any questions, special requirements or concerns, please send us an inquiry and/or contact our Support team ahead of purchase. Recommended alternatives for this product can be found below, along with publications, customer reviews and Q&amp;As</p>

## Properties

<b>Form</b>	Liquid
<b>Storage instructions</b>	Shipped at 4°C. Upon delivery aliquot and store at -20°C. Avoid freeze / thaw cycles.
<b>Storage buffer</b>	pH: 7.20 Preservative: 0.02% Sodium azide Constituents: 59% PBS, 40% Glycerol (glycerin, glycerine)
<b>Purity</b>	Immunogen affinity purified
<b>Clonality</b>	Polyclonal
<b>Isotype</b>	IgG

## Applications

## The Abpromise guarantee

Our **Abpromise guarantee** covers the use of ab122722 in the following tested applications.

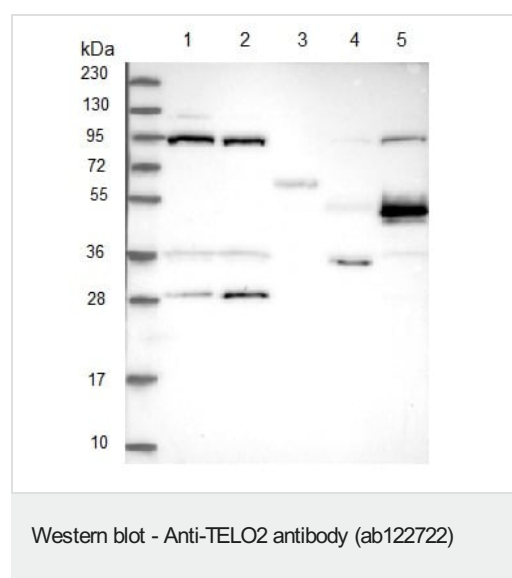
The application notes include recommended starting dilutions; optimal dilutions/concentrations should be determined by the end user.

Application	Abreviews	Notes
IHC-P		1/50 - 1/200. Perform heat mediated antigen retrieval with citrate buffer pH 6 before commencing with IHC staining protocol.
WB		Use a concentration of 0.04 - 0.4 µg/ml.
ICC/IF		Use a concentration of 0.25 - 2 µg/ml.

## Target

<b>Function</b>	May be involved in telomere length regulation. Promotes assembly, stabilizes and maintains the activity of mTORC1 and mTORC2 complexes, which regulate cell growth and survival in response to nutrient and hormonal signals.
<b>Sequence similarities</b>	Belongs to the TEL2 family.
<b>Cellular localization</b>	Cytoplasm. Membrane. Nucleus. Chromosome > telomere.

## Images



**All lanes :** Anti-TELO2 antibody (ab122722) at 1/250 dilution

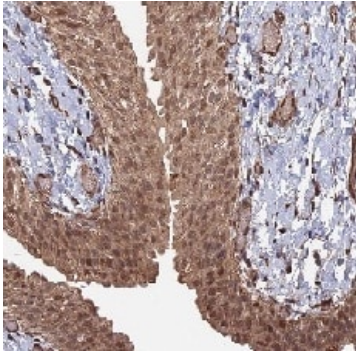
**Lane 1 :** RT-4

**Lane 2 :** U-251 MG

**Lane 3 :** Human plasma

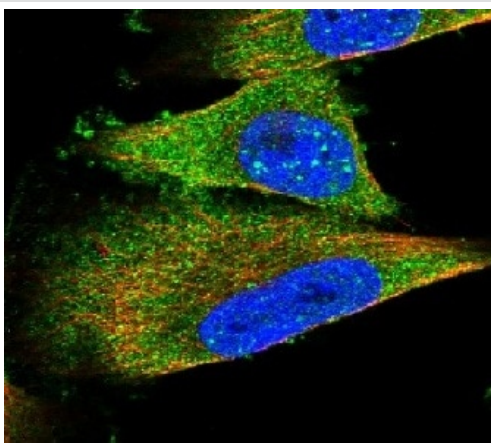
**Lane 4 :** Human liver lysate

**Lane 5 :** Human tonsil lysate



Immunohistochemistry (Formalin/PFA-fixed paraffin-embedded sections) - Anti-TELO2 antibody (ab122722)

ab122722, at 1/50 dilution, staining TELO2 in paraffin-embedded Human urinary bladder tissue by Immunohistochemistry.



Immunocytochemistry/ Immunofluorescence - Anti-TELO2 antibody (ab122722)

ab122722, at 4 ug/ml, staining TELO2 in Human cell line U-251 MG by Immunofluorescence.

**Please note:** All products are "FOR RESEARCH USE ONLY. NOT FOR USE IN DIAGNOSTIC PROCEDURES"

### Our Abpromise to you: Quality guaranteed and expert technical support

- Replacement or refund for products not performing as stated on the datasheet
- Valid for 12 months from date of delivery
- Response to your inquiry within 24 hours
- We provide support in Chinese, English, French, German, Japanese and Spanish
- Extensive multi-media technical resources to help you
- We investigate all quality concerns to ensure our products perform to the highest standards

If the product does not perform as described on this datasheet, we will offer a refund or replacement. For full details of the Abpromise, please visit <https://www.abcam.com/abpromise> or contact our technical team.

### Terms and conditions

- Guarantee only valid for products bought direct from Abcam or one of our authorized distributors