

Product datasheet

Anti-TEM1 antibody ab67273

★★★★★ [1 Abreviews](#) [1 References](#) [4 Images](#)

Overview

Product name	Anti-TEM1 antibody
Description	Rabbit polyclonal to TEM1
Host species	Rabbit
Specificity	ab67273 recognizes both isoforms of TEM1.
Tested applications	Suitable for: ICC/IF, WB, IHC-P
Species reactivity	Reacts with: Human
Immunogen	A 14 amino acid synthetic peptide derived from near the carboxy terminus of the human TEM1.
Positive control	WB: Human Colon tissue lysate. HEK-293, A431, A549, and CaCo-2 cell lysates; IHC-P: Human Colon tissue.
General notes	<p>The Life Science industry has been in the grips of a reproducibility crisis for a number of years. Abcam is leading the way in addressing this with our range of recombinant monoclonal antibodies and knockout edited cell lines for gold-standard validation. Please check that this product meets your needs before purchasing.</p> <p>If you have any questions, special requirements or concerns, please send us an inquiry and/or contact our Support team ahead of purchase. Recommended alternatives for this product can be found below, along with publications, customer reviews and Q&As</p>

Properties

Form	Liquid
Storage instructions	Shipped at 4°C. Store at +4°C short term (1-2 weeks). Store at +4°C.
Storage buffer	pH: 7.2 Preservative: 0.02% Sodium azide Constituent: PBS
Purity	Immunogen affinity purified
Clonality	Polyclonal
Isotype	IgG

Applications

The Abpromise guarantee

Our **Abpromise guarantee** covers the use of ab67273 in the following tested applications.

The application notes include recommended starting dilutions; optimal dilutions/concentrations should be determined by the end user.

Application	Abreviews	Notes
ICC/IF		Use a concentration of 20 µg/ml.
WB		Use a concentration of 0.5 - 2 µg/ml. Detects a band of approximately 46, 90 kDa (predicted molecular weight: 46, 81 kDa).
IHC-P	★★★★★ (1)	Use at an assay dependent concentration.

Target

Function

May play a role in tumor angiogenesis.

Tissue specificity

Expressed in tumor endothelial cells but absent or barely detectable in normal endothelial cells. Expressed in metastatic lesions of the liver and during angiogenesis of corpus luteum formation and wound healing. Expressed in vascular endothelial cells of malignant tumors but not in normal blood vessels. Expressed in stromal fibroblasts.

Sequence similarities

Contains 1 C-type lectin domain.
Contains 1 EGF-like domain.
Contains 1 Sushi (CCP/SCR) domain.

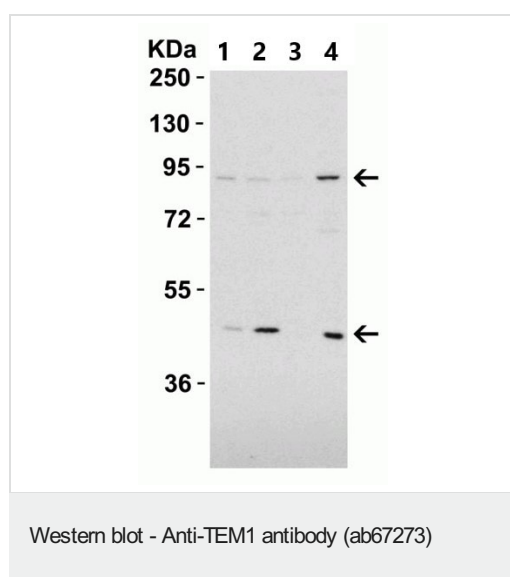
Post-translational modifications

O-glycosylated with sialylated oligosaccharides.
May be N-glycosylated.

Cellular localization

Membrane.

Images



All lanes : Anti-TEM1 antibody (ab67273) at 2 µg/ml

Lane 1 : HEK-293 (human epithelial cell line from embryonic kidney) cell lysate

Lane 2 : A431 (human epidermoid carcinoma cell line) cell lysate

Lane 3 : A549 (human lung carcinoma cell line) cell lysate

Lane 4 : CaCo-2 (human colorectal adenocarcinoma cell line) cell lysate

Lysates/proteins at 15 µg per lane.

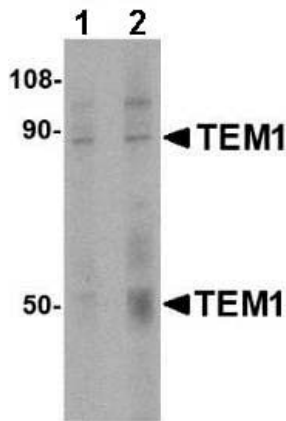
Secondary

All lanes : Goat anti-rabbit IgG (HRP) at 1/10000 dilution

Predicted band size: 46, 81 kDa

Observed band size: 46, 90 kDa

Immunocytochemistry/ Immunofluorescence - Anti-TEM1 antibody (ab67273)



Western blot - Anti-TEM1 antibody (ab67273)

Blocking/Diluting buffer: 5% NFDM/TBST.

Immunofluorescent analysis of 4% paraformaldehyde-fixed Human Colon tissue labeling TEM-1 with ab67273 at 20 µg/mL, followed by goat anti-rabbit IgG secondary antibody at 1/500 dilution (red).

Lane 1 : Anti-TEM1 antibody (ab67273) at 0.5 µg/ml

Lane 2 : Anti-TEM1 antibody (ab67273) at 1 µg/ml

All lanes : Human colon tissue lysate

Lysates/proteins at 15 µg per lane.

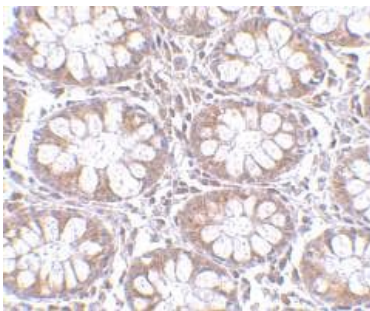
Secondary

All lanes : anti rabbit secondary antibody

Predicted band size: 46, 81 kDa

Observed band size: 50,80 kDa

Additional bands at: 100 kDa. We are unsure as to the identity of these extra bands.



Immunohistochemistry (Formalin/PFA-fixed paraffin-embedded sections) - Anti-TEM1 antibody (ab67273)

ab67273 at 2.5 µg/ml in staining of TEM1 in human colon tissue using IHC-P. Tissue was fixed with formaldehyde and blocked with 10% serum for 1 h at RT; antigen retrieval was by heat mediation with a citrate buffer (pH6). Samples were incubated with primary antibody overnight at 4°C. A goat anti-rabbit IgG H&L (HRP) at 1/250 was used as secondary. Counter stained with Hematoxylin.

Please note: All products are "FOR RESEARCH USE ONLY. NOT FOR USE IN DIAGNOSTIC PROCEDURES"

Our Abpromise to you: Quality guaranteed and expert technical support

- Replacement or refund for products not performing as stated on the datasheet
- Valid for 12 months from date of delivery

- Response to your inquiry within 24 hours
- We provide support in Chinese, English, French, German, Japanese and Spanish
- Extensive multi-media technical resources to help you
- We investigate all quality concerns to ensure our products perform to the highest standards

If the product does not perform as described on this datasheet, we will offer a refund or replacement. For full details of the Abpromise, please visit <https://www.abcam.com/abpromise> or contact our technical team.

Terms and conditions

- Guarantee only valid for products bought direct from Abcam or one of our authorized distributors