

Anti-Testosterone antibody [4E1G2] ab217912

★★★★★ [1 Abreviews](#) [1 Image](#)

Overview

Product name	Anti-Testosterone antibody [4E1G2]
Description	Mouse monoclonal [4E1G2] to Testosterone
Host species	Mouse
Tested applications	Suitable for: IHC-P
Species reactivity	Reacts with: Human
Immunogen	Chemical/ Small Molecule corresponding to Human Testosterone conjugated to bovine serum albumin.
Positive control	IHC-P: Human testicular carcinoma tissue.
General notes	<p>The Life Science industry has been in the grips of a reproducibility crisis for a number of years. Abcam is leading the way in addressing this with our range of recombinant monoclonal antibodies and knockout edited cell lines for gold-standard validation. Please check that this product meets your needs before purchasing.</p> <p>If you have any questions, special requirements or concerns, please send us an inquiry and/or contact our Support team ahead of purchase. Recommended alternatives for this product can be found below, along with publications, customer reviews and Q&As</p>

Properties

Form	Liquid
Storage instructions	Shipped at 4°C. Store at +4°C short term (1-2 weeks). Upon delivery aliquot. Store at -20°C long term. Avoid freeze / thaw cycle.
Storage buffer	<p>pH: 7.2</p> <p>Preservative: 0.05% Sodium azide</p> <p>Constituents: 0.05% BSA, 99% PBS</p>
Purity	Protein G purified
Clonality	Monoclonal
Clone number	4E1G2
Isotype	IgG1
Light chain type	kappa

Applications

The Abpromise guarantee

Our **Abpromise guarantee** covers the use of ab217912 in the following tested applications.

The application notes include recommended starting dilutions; optimal dilutions/concentrations should be determined by the end user.

Application	Abreviews	Notes
IHC-P	★★★★★ (1)	Use a concentration of 0.25 - 0.5 µg/ml. Perform heat mediated antigen retrieval with Tris/EDTA buffer pH 9.0 before commencing with IHC staining protocol.

Target

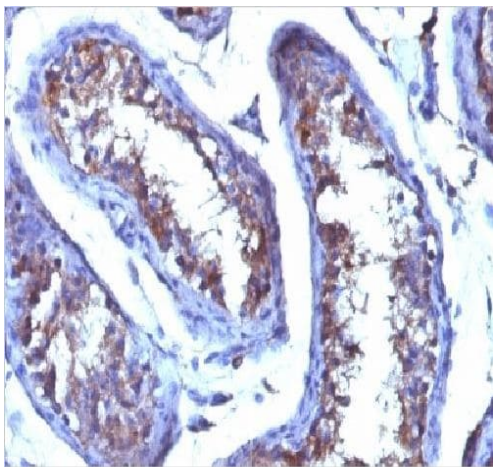
Relevance

Testosterone is the principal androgen, or male sex hormone. One of the group of compounds known as anabolic steroids, testosterone is secreted by the testes but is also synthesized in small quantities in the ovaries, cortices of the adrenal glands, and placenta, usually from cholesterol. Testosterone is necessary in the fetus for the development of male external genitalia. Testosterone also stimulates protein synthesis and accounts for the greater muscular development of the male. For many years, synthetic steroids similar to testosterone have been used by athletes with the goal of improving performance, although recent medical research has shown that these drugs may have a wide range of harmful side effects.

Cellular localization

Secreted

Images



Immunohistochemical analysis of formalin-fixed and paraffin-embedded human testicular carcinoma tissue labeling Testosterone with ab217912 at 0.5 µg/mL dilution.

Immunohistochemistry (Formalin/PFA-fixed paraffin-embedded sections) - Anti-Testosterone antibody [4E1G2] (ab217912)

Please note: All products are "FOR RESEARCH USE ONLY. NOT FOR USE IN DIAGNOSTIC PROCEDURES"

Our Abpromise to you: Quality guaranteed and expert technical support

- Replacement or refund for products not performing as stated on the datasheet
- Valid for 12 months from date of delivery
- Response to your inquiry within 24 hours
- We provide support in Chinese, English, French, German, Japanese and Spanish
- Extensive multi-media technical resources to help you
- We investigate all quality concerns to ensure our products perform to the highest standards

If the product does not perform as described on this datasheet, we will offer a refund or replacement. For full details of the Abpromise, please visit <https://www.abcam.com/abpromise> or contact our technical team.

Terms and conditions

- Guarantee only valid for products bought direct from Abcam or one of our authorized distributors