

Product datasheet

Anti-THEA antibody ab153835

[2 References](#) [2 Images](#)

Overview

Product name	Anti-THEA antibody
Description	Rabbit polyclonal to THEA
Host species	Rabbit
Tested applications	Suitable for: WB, ICC/IF
Species reactivity	Reacts with: Human
Immunogen	Recombinant fragment corresponding to Human THEA aa 18-238. Sequence:

R TSRKSALRAG NDSAMADGEG YRNPTEVQMS
QLVLPCHTNQ RGELSVGQLL KWIDTTACLS
AERHAGCPCV TASMDDIYFE HTISVGQVVN
IKAKVNRAFN SSMEVGIQVA SEDLCSEKQW
NVCKALATFV ARREITKVKL KQITPRTEEE
KMEHSVAAER RRMRLVYADT IKDLLANCAI
QGDLESRDCE RMVPAEKTRV ESVELVLPPH
ANHQGNTF

Database link: [Q8WXI4](#)

 [Run BLAST with](#)

 [Run BLAST with](#)

Positive control 293T, A431, Jurkat cells

General notes

The Life Science industry has been in the grips of a reproducibility crisis for a number of years. Abcam is leading the way in addressing this with our range of recombinant monoclonal antibodies and knockout edited cell lines for gold-standard validation. Please check that this product meets your needs before purchasing.

If you have any questions, special requirements or concerns, please send us an inquiry and/or contact our Support team ahead of purchase. Recommended alternatives for this product can be found below, along with publications, customer reviews and Q&As

Properties

Form	Liquid
Storage instructions	Shipped at 4°C. Upon delivery aliquot. Store at -20°C or -80°C. Avoid freeze / thaw cycle.
Storage buffer	pH: 7.00

	Preservative: 0.01% Thimerosal (merthiolate)
	Constituents: 78.99% PBS, 1% BSA, 20% Glycerol (glycerin, glycerine)
Purity	Immunogen affinity purified
Clonality	Polyclonal
Isotype	IgG

Applications

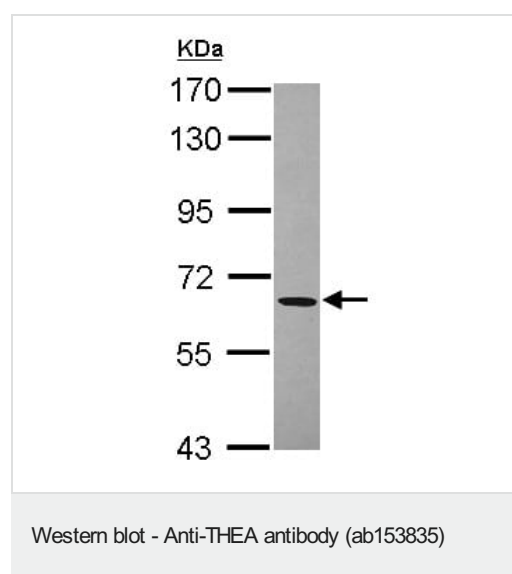
The Abpromise guarantee Our **Abpromise guarantee** covers the use of ab153835 in the following tested applications. The application notes include recommended starting dilutions; optimal dilutions/concentrations should be determined by the end user.

Application	Abreviews	Notes
WB		1/500 - 1/3000. Predicted molecular weight: 68 kDa.
ICC/IF		1/100 - 1/1000.

Target

Function	Has acyl-CoA thioesterase activity towards medium (C12) and long-chain (C18) fatty acyl-CoA substrates.
Tissue specificity	Isoform 1 is predominantly expressed in skeletal muscle, liver, testis, stomach, spleen, lung and brain. Isoform 2 is predominantly expressed in kidney, uterus, hibernoma and white adipose tissue.
Sequence similarities	Contains 2 acyl coenzyme A hydrolase domains. Contains 1 START domain.
Cellular localization	Cytoplasm.

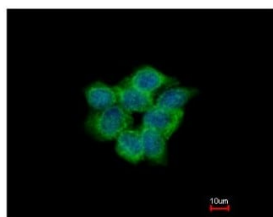
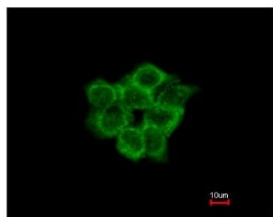
Images



Anti-THEA antibody (ab153835) at 1/1000 dilution + Jurkat 30µg whole cell lysate

Predicted band size: 68 kDa

7.5% SDS PAGE



Immunofluorescence analysis of methanol-fixed A431 using ab153835 antibody at 1/200 dilution. The bottom image shows counterstaining with a nuclear dye.

Immunocytochemistry/ Immunofluorescence - Anti-THEA antibody (ab153835)

Please note: All products are "FOR RESEARCH USE ONLY. NOT FOR USE IN DIAGNOSTIC PROCEDURES"

Our Abpromise to you: Quality guaranteed and expert technical support

- Replacement or refund for products not performing as stated on the datasheet
- Valid for 12 months from date of delivery
- Response to your inquiry within 24 hours
- We provide support in Chinese, English, French, German, Japanese and Spanish
- Extensive multi-media technical resources to help you
- We investigate all quality concerns to ensure our products perform to the highest standards

If the product does not perform as described on this datasheet, we will offer a refund or replacement. For full details of the Abpromise, please visit <https://www.abcam.com/abpromise> or contact our technical team.

Terms and conditions

- Guarantee only valid for products bought direct from Abcam or one of our authorized distributors