

## Product datasheet

# Anti-Thomsen-Friedenreich Antigen antibody [SPM320], prediluted ab17785

[3 References](#) [1 Image](#)

### Overview

<b>Product name</b>	Anti-Thomsen-Friedenreich Antigen antibody [SPM320], prediluted
<b>Description</b>	Mouse monoclonal [SPM320] to Thomsen-Friedenreich Antigen, prediluted
<b>Host species</b>	Mouse
<b>Tested applications</b>	<b>Suitable for:</b> IHC-P
<b>Species reactivity</b>	<b>Reacts with:</b> Mouse, Rat, Human
<b>Immunogen</b>	Tissue, cells or virus corresponding to Human Thomsen-Friedenreich Antigen.
<b>Epitope</b>	Gal $\beta$ 1-3GalNAc
<b>Positive control</b>	KG1 cells. Human colorectal carcinoma tissues.
<b>General notes</b>	<p>The Life Science industry has been in the grips of a reproducibility crisis for a number of years. Abcam is leading the way in addressing this with our range of recombinant monoclonal antibodies and knockout edited cell lines for gold-standard validation. Please check that this product meets your needs before purchasing.</p> <p>If you have any questions, special requirements or concerns, please send us an inquiry and/or contact our Support team ahead of purchase. Recommended alternatives for this product can be found below, along with publications, customer reviews and Q&amp;As</p>

### Properties

<b>Form</b>	Liquid
<b>Storage instructions</b>	Shipped at 4°C. Store at +4°C.
<b>Storage buffer</b>	pH: 7.2 Preservative: 0.09% Sodium azide Constituents: Tris buffered saline, 1% BSA
<b>Purity</b>	Purified IgM
<b>Clonality</b>	Monoclonal
<b>Clone number</b>	SPM320
<b>Isotype</b>	IgM
<b>Light chain type</b>	kappa

## Applications

### The Abpromise guarantee

Our **Abpromise guarantee** covers the use of ab17785 in the following tested applications.

The application notes include recommended starting dilutions; optimal dilutions/concentrations should be determined by the end user.

Application	Abreviews	Notes
IHC-P		Use at an assay dependent concentration. Perform heat mediated antigen retrieval with citrate buffer pH 6 before commencing with IHC staining protocol.

## Target

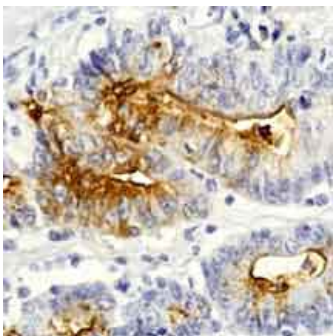
### Relevance

The Thomsen Friedenreich antigen acts as an oncofoetal antigen, with low expression in normal adult tissues but increasing to foetal levels of expression in hyperplasia or malignancy. It is considered as a pan carcinoma marker. Can be applied for the detection of cells with TF antigen and is especially applicable for sensitive determination of neuraminidases.

### Cellular localization

Cell Membrane

## Images



Human colon adenocarcinoma stained with ab17785 (prediluted)

Immunohistochemistry (Formalin/PFA-fixed paraffin-embedded sections) - Anti-Thomsen-Friedenreich Antigen antibody [SPM320], prediluted (ab17785)

**Please note:** All products are "FOR RESEARCH USE ONLY. NOT FOR USE IN DIAGNOSTIC PROCEDURES"

## Our Abpromise to you: Quality guaranteed and expert technical support

- Replacement or refund for products not performing as stated on the datasheet
- Valid for 12 months from date of delivery
- Response to your inquiry within 24 hours
- We provide support in Chinese, English, French, German, Japanese and Spanish
- Extensive multi-media technical resources to help you
- We investigate all quality concerns to ensure our products perform to the highest standards

If the product does not perform as described on this datasheet, we will offer a refund or replacement. For full details of the Abpromise, please visit <https://www.abcam.com/abpromise> or contact our technical team.

#### **Terms and conditions**

---

- Guarantee only valid for products bought direct from Abcam or one of our authorized distributors