

# Anti-Thymidylate Synthase antibody ab7398

[7 References](#) [1 Image](#)

### Overview

<b>Product name</b>	Anti-Thymidylate Synthase antibody
<b>Description</b>	Sheep polyclonal to Thymidylate Synthase
<b>Host species</b>	Sheep
<b>Tested applications</b>	<b>Suitable for:</b> WB
<b>Species reactivity</b>	<b>Reacts with:</b> Human <b>Does not react with:</b> Saccharomyces cerevisiae
<b>Immunogen</b>	Recombinant full length protein corresponding to Human Thymidylate Synthase. Produced in E.coli. Database link: <a href="#">P04818</a>
<b>General notes</b>	<p>The antibody recognizes the expected additional band corresponding to the ternary complex of human TS-dFUMP-reduced folate in HeLa cells treated with the TS inhibitor 5-FUdR. This event occurs in most human breast, colorectal, gastric, head and neck carcinomas. The antibody recognizes 36 kDa human TS.</p> <p>The Life Science industry has been in the grips of a reproducibility crisis for a number of years. Abcam is leading the way in addressing this with our range of recombinant monoclonal antibodies and knockout edited cell lines for gold-standard validation. Please check that this product meets your needs before purchasing.</p> <p>If you have any questions, special requirements or concerns, please send us an inquiry and/or contact our Support team ahead of purchase. Recommended alternatives for this product can be found below, along with publications, customer reviews and Q&amp;As</p>

### Properties

<b>Form</b>	Liquid
<b>Storage instructions</b>	Shipped at 4°C. Store at +4°C short term (1-2 weeks). Upon delivery aliquot. Store at -20°C or -80°C. Avoid freeze / thaw cycle.
<b>Storage buffer</b>	Preservative: 0.01% Sodium azide Constituents: 0.42% Potassium phosphate, 0.87% Sodium chloride
<b>Purity</b>	IgG fraction
<b>Clonality</b>	Polyclonal
<b>Isotype</b>	IgG

## Applications

### The Abpromise guarantee

Our **Abpromise guarantee** covers the use of ab7398 in the following tested applications.

The application notes include recommended starting dilutions; optimal dilutions/concentrations should be determined by the end user.

Application	Abreviews	Notes
WB		Use at an assay dependent concentration. Predicted molecular weight: 37 kDa.

## Target

### Function

Contributes to the de novo mitochondrial thymidylate biosynthesis pathway.

### Pathway

Pyrimidine metabolism; dTTP biosynthesis.

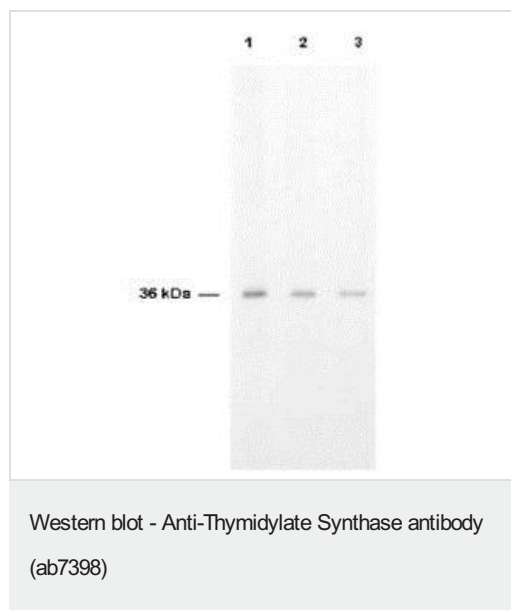
### Sequence similarities

Belongs to the thymidylate synthase family.

### Cellular localization

Nucleus. Cytoplasm. Mitochondrion. Mitochondrion matrix. Mitochondrion inner membrane.

## Images



ab7398 is shown to detect thymidylate synthase present in a HeLa cell extract. Each lane is estimated to contain 4 µg of protein. Lanes 1, 2 and 3 represent 1/2000, 1/5000 and 1/10000 fold dilutions of the antibody. Detection was made using HRP Rabbit-a-Sheep IgG diluted 1/1000 and color development using TMB substrate for approximately 4'.

**Please note:** All products are "FOR RESEARCH USE ONLY. NOT FOR USE IN DIAGNOSTIC PROCEDURES"

## Our Abpromise to you: Quality guaranteed and expert technical support

- Replacement or refund for products not performing as stated on the datasheet
- Valid for 12 months from date of delivery
- Response to your inquiry within 24 hours
- We provide support in Chinese, English, French, German, Japanese and Spanish

- Extensive multi-media technical resources to help you
- We investigate all quality concerns to ensure our products perform to the highest standards

If the product does not perform as described on this datasheet, we will offer a refund or replacement. For full details of the Abpromise, please visit <https://www.abcam.com/abpromise> or contact our technical team.

#### **Terms and conditions**

---

- Guarantee only valid for products bought direct from Abcam or one of our authorized distributors