

Product datasheet

Anti-TICAM2 antibody [mAbcam77169] ab77169

[2 Images](#)

Overview

Product name	Anti-TICAM2 antibody [mAbcam77169]
Description	Mouse monoclonal [mAbcam77169] to TICAM2
Host species	Mouse
Tested applications	Suitable for: WB, Flow Cyt (Intra)
Species reactivity	Reacts with: Human
Immunogen	Synthetic peptide corresponding to Human TICAM2 aa 200 to the C-terminus conjugated to keyhole limpet haemocyanin. (Peptide available as ab57980)
Positive control	Recombinant Human TICAM2 protein (ab123160) can be used as a positive control in WB. This antibody gave a positive signal in Human Kidney and Human Spleen Tissue Lyates
General notes	<p>This antibody clone is manufactured by Abcam. If you require a custom buffer formulation or conjugation for your experiments, please contact orders@abcam.com.</p> <p>The Life Science industry has been in the grips of a reproducibility crisis for a number of years. Abcam is leading the way in addressing this with our range of recombinant monoclonal antibodies and knockout edited cell lines for gold-standard validation. Please check that this product meets your needs before purchasing.</p> <p>If you have any questions, special requirements or concerns, please send us an inquiry and/or contact our Support team ahead of purchase. Recommended alternatives for this product can be found below, along with publications, customer reviews and Q&As</p>

Properties

Form	Liquid
Storage instructions	Shipped at 4°C. Upon delivery aliquot and store at -20°C or -80°C. Avoid repeated freeze / thaw cycles.
Storage buffer	pH: 7.40 Preservative: 0.02% Sodium azide
Purity	IgG fraction
Clonality	Monoclonal
Clone number	mAbcam77169

Myeloma Sp2/0-Ag14
Isotype IgG1

Applications

The Abpromise guarantee Our **Abpromise guarantee** covers the use of ab77169 in the following tested applications.

The application notes include recommended starting dilutions; optimal dilutions/concentrations should be determined by the end user.

Application	Abreviews	Notes
WB		Use a concentration of 10 µg/ml. Detects a band of approximately 32 kDa (predicted molecular weight: 27 kDa).
Flow Cyt (Intra)		Use 1 µg for 10 ⁶ cells. ab170190 - Mouse monoclonal IgG1, is suitable for use as an isotype control with this antibody.

Target

Function Functions in LPS-TLR4 signaling to regulate the MYD88-independent pathway during the innate immune response to LPS. Also involved in IL1-triggered NF-kappa-B activation, functioning upstream of IRAK1, IRAK2, TRAF6, and IKBKB. Physically bridges TLR4 and TICAM1 and functionally transmits LPS-TRL4 signal to TICAM1.

Tissue specificity Expressed in spleen, prostate, testis, uterus, small intestine, colon, peripheral blood leukocytes, heart, placenta, lung, liver, skeletal muscle, and pancreas.

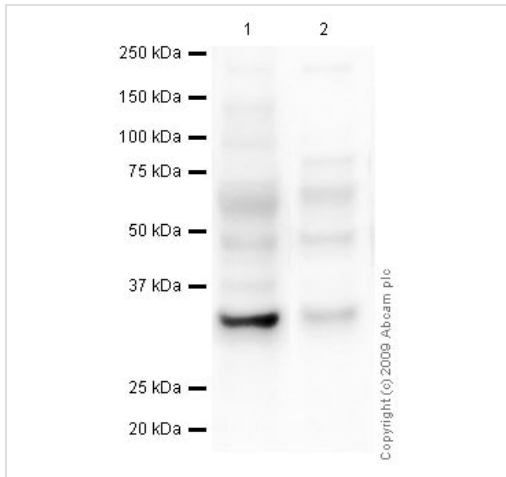
Sequence similarities Contains 1 TIR domain.

Domain The TIR domain mediates the interaction with TRAF6.

Post-translational modifications Phosphorylated by PKCE in response to LPS. Phosphorylation is essential for its function. It is depleted from the membrane upon phosphorylation.
Myristoylated. Required for membrane association which is critical for its ability to initiate efficient signaling.

Cellular localization Cytoplasm. Golgi apparatus. Cell membrane. Localized to the plasma membrane as a result of myristoylation. Phosphorylation on Ser-16 leads to its depletion from the membrane.

Images



Western blot - Anti-TICAM2 antibody [mAbcam77169] (ab77169)

All lanes : Anti-TICAM2 antibody [mAbcam77169] (ab77169) at 10 µg/ml

Lane 1 : Human kidney tissue lysate - total protein (**ab30203**)

Lane 2 : Human spleen tissue lysate - total protein (**ab29699**)

Lysates/proteins at 20 µg per lane.

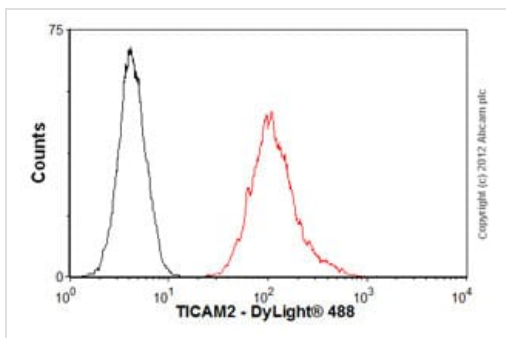
Secondary

All lanes : Goat polyclonal to Mouse IgG - H&L - Pre-Adsorbed (HRP) at 1/3000 dilution

Performed under reducing conditions.

Predicted band size: 27 kDa

Observed band size: 32 kDa



Flow Cytometry (Intracellular) - Anti-TICAM2 antibody [mAbcam77169] (ab77169)

Overlay histogram showing PC3 cells stained with ab77169 (red line). The cells were fixed with 80% methanol (5 min) and then permeabilized with 0.1% PBS-Tween for 20 min. The cells were then incubated in 1x PBS / 10% normal goat serum / 0.3M glycine to block non-specific protein-protein interactions. The cells were then incubated with the antibody (ab77169, 1µg/1x10⁶ cells) for 30 min at 22°C. The secondary antibody used was DyLight® 488 goat anti-mouse IgG (H+L) (**ab96879**) at 1/500 dilution for 30 min at 22°C. Isotype control antibody (black line) was mouse IgG1 [ICIGG1] (**ab91353**, 2µg/1x10⁶ cells) used under the same conditions. Acquisition of >5,000 events was performed.

Please note: All products are "FOR RESEARCH USE ONLY. NOT FOR USE IN DIAGNOSTIC PROCEDURES"

Our Abpromise to you: Quality guaranteed and expert technical support

- Replacement or refund for products not performing as stated on the datasheet
- Valid for 12 months from date of delivery
- Response to your inquiry within 24 hours

- We provide support in Chinese, English, French, German, Japanese and Spanish
- Extensive multi-media technical resources to help you
- We investigate all quality concerns to ensure our products perform to the highest standards

If the product does not perform as described on this datasheet, we will offer a refund or replacement. For full details of the Abpromise, please visit <https://www.abcam.com/abpromise> or contact our technical team.

Terms and conditions

- Guarantee only valid for products bought direct from Abcam or one of our authorized distributors