

Product datasheet

Anti-TIL/TLR1 antibody [EPR2075] ab68158

Recombinant RabMAb

[1 References](#) [4 Images](#)

Overview

Product name	Anti-TIL/TLR1 antibody [EPR2075]
Description	Rabbit monoclonal [EPR2075] to TIL/TLR1
Host species	Rabbit
Tested applications	Suitable for: WB, IP, Flow Cyt Unsuitable for: ICC/IF or IHC-P
Species reactivity	Reacts with: Human
Immunogen	Synthetic peptide within Human TIL/TLR1 aa 150-250 (extracellular). The exact sequence is proprietary.
Positive control	WB: Daudi and Ramos cell lysates. Flow Cyt: Daudi cells. IP: Ramos cell lysate.
General notes	This product is a recombinant monoclonal antibody, which offers several advantages including: <ul style="list-style-type: none"> - High batch-to-batch consistency and reproducibility - Improved sensitivity and specificity - Long-term security of supply - Animal-free production For more information see here . Our RabMAb [®] technology is a patented hybridoma-based technology for making rabbit monoclonal antibodies. For details on our patents, please refer to RabMAb[®] patents . Mouse, Rat: We have preliminary internal testing data to indicate this antibody may not react with these species. Please contact us for more information.

Properties

Form	Liquid
Storage instructions	Shipped at 4°C. Upon delivery aliquot and store at -20°C. Avoid freeze / thaw cycles.
Storage buffer	pH: 7.2 Preservative: 0.01% Sodium azide Constituents: 9% PBS, 40% Glycerol (glycerin, glycerine), 0.05% BSA, 50% Tissue culture supernatant
Purity	Protein A purified

Clonality	Monoclonal
Clone number	EPR2075
Isotype	IgG

Applications

The Abpromise guarantee Our **Abpromise guarantee** covers the use of ab68158 in the following tested applications. The application notes include recommended starting dilutions; optimal dilutions/concentrations should be determined by the end user.

Application	Abreviews	Notes
WB		
IP		
Flow Cyt		

Application notes

Flow Cyt: 1/60.
 IP: 1/40.
 WB: 1/1000 - 1/2000. Detects a band of approximately 90 and 125 kDa (predicted molecular weight: 90 kDa).

Is unsuitable for ICC or IHC-P.

Not yet tested in other applications.
 Optimal dilutions/concentrations should be determined by the end user.

Target

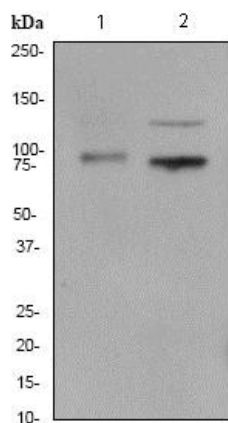
Function Participates in the innate immune response to microbial agents. Cooperates with TLR2 to mediate the innate immune response to bacterial lipoproteins or lipopeptides. Acts via MYD88 and TRAF6, leading to NF-kappa-B activation, cytokine secretion and the inflammatory response.

Tissue specificity Ubiquitous. Highly expressed in spleen, ovary, peripheral blood leukocytes, thymus and small intestine.

Sequence similarities Belongs to the Toll-like receptor family.
 Contains 12 LRR (leucine-rich) repeats.
 Contains 1 LRRCT domain.
 Contains 1 TIR domain.

Cellular localization Cell membrane. Cytoplasmic vesicle > phagosome membrane.

Images



Western blot - Anti-TIL/TLR1 antibody [EPR2075] (ab68158)

All lanes : Anti-TIL/TLR1 antibody [EPR2075] (ab68158) at 1/1000 dilution

Lane 1 : Daudi cell lysate

Lane 2 : Ramos cell lysate

Lysates/proteins at 10 µg per lane.

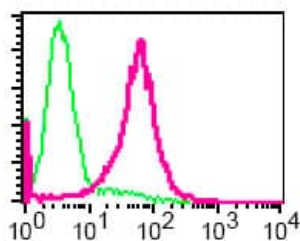
Secondary

All lanes : HRP labelled goat anti-rabbit at 1/2000 dilution

Predicted band size: 90 kDa

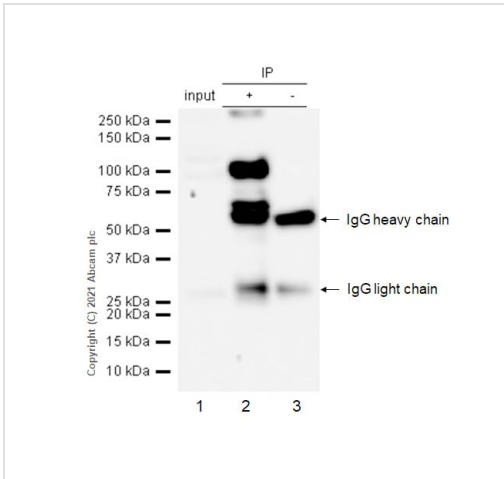
Observed band size: 90 kDa

Additional bands at: 125 kDa. We are unsure as to the identity of these extra bands.



Flow Cytometry - Anti-TIL/TLR1 antibody [EPR2075] (ab68158)

Flow cytometric analysis of TIL/TLR1 in Daudi cells using ab68158 at 1/60 dilution (pink) or a rabbit IgG (green).



Immunoprecipitation - Anti-TIL/TLR1 antibody
[EPR2075] (ab68158)

TIL/TLR1 was immunoprecipitated from 0.35 mg Ramos (Human Burkitt's lymphoma B lymphocyte) whole cell lysate 10 µg with ab68158 at 1/50 dilution (2µg). VeriBlot for IP Detection Reagent (HRP)([ab131366](#)) was used at 1/5000 dilution.

Lane 1: Ramos (Human Burkitt's lymphoma B lymphocyte) whole cell lysate 10 µg

Lane 2: ab68158 IP in Ramos whole cell lysate

Lane 3: Rabbit monoclonal IgG ([ab172730](#)) instead of ab68158 in Ramos whole cell lysate

Blocking and dilution buffer and concentration: 5% NFD/MBST.

Why choose a recombinant antibody?

Research with confidence
Consistent and reproducible results

Long-term and scalable supply
Recombinant technology

Success from the first experiment
Confirmed specificity

Ethical standards compliant
Animal-free production

Anti-TIL/TLR1 antibody [EPR2075] (ab68158)

Please note: All products are "FOR RESEARCH USE ONLY. NOT FOR USE IN DIAGNOSTIC PROCEDURES"

Our Abpromise to you: Quality guaranteed and expert technical support

- Replacement or refund for products not performing as stated on the datasheet
- Valid for 12 months from date of delivery
- Response to your inquiry within 24 hours
- We provide support in Chinese, English, French, German, Japanese and Spanish
- Extensive multi-media technical resources to help you
- We investigate all quality concerns to ensure our products perform to the highest standards

If the product does not perform as described on this datasheet, we will offer a refund or replacement. For full details of the Abpromise, please visit <https://www.abcam.com/abpromise> or contact our technical team.

Terms and conditions

- Guarantee only valid for products bought direct from Abcam or one of our authorized distributors