

### Anti-TIMP3 antibody ab39184

★★★★★ [6 Abreviews](#) [66 References](#) [2 Images](#)

#### Overview

<b>Product name</b>	Anti-TIMP3 antibody
<b>Description</b>	Rabbit polyclonal to TIMP3
<b>Host species</b>	Rabbit
<b>Specificity</b>	ab39184 binds to TIMP3. It recognizes the glycosylated and unglycosylated forms of TIMP3, and works against native or reduced TIMP3. Ab39184 does not cross react with the other TIMP family members (TIMP1, TIMP2, TIMP4).
<b>Tested applications</b>	<b>Suitable for:</b> ICC/IF, WB
<b>Species reactivity</b>	<b>Reacts with:</b> Mouse, Human
<b>Immunogen</b>	Synthetic peptide of TIMP3 based on loop #1 of the human TIMP3. Read Abcam's proprietary immunogen policy (Peptide available as <a href="#">ab41152</a> .)
<b>General notes</b>	<p>The Life Science industry has been in the grips of a reproducibility crisis for a number of years. Abcam is leading the way in addressing this with our range of recombinant monoclonal antibodies and knockout edited cell lines for gold-standard validation. Please check that this product meets your needs before purchasing.</p> <p>If you have any questions, special requirements or concerns, please send us an inquiry and/or contact our Support team ahead of purchase. Recommended alternatives for this product can be found below, along with publications, customer reviews and Q&amp;As</p>

#### Properties

<b>Form</b>	Liquid
<b>Storage instructions</b>	Shipped at 4°C. Store at +4°C short term (1-2 weeks). Upon delivery aliquot. Store at -20°C long term.
<b>Storage buffer</b>	Preservative: 0.05% Sodium azide Constituent: 50% Glycerol
<b>Purity</b>	Immunogen affinity purified
<b>Clonality</b>	Polyclonal
<b>Isotype</b>	IgG

#### Applications

## The Abpromise guarantee

Our **Abpromise guarantee** covers the use of ab39184 in the following tested applications.

The application notes include recommended starting dilutions; optimal dilutions/concentrations should be determined by the end user.

Application	Abreviews	Notes
ICC/IF	★★★★★ (2)	Use a concentration of 1 - 5 µg/ml.
WB	★★★★★ (3)	1/1000 - 1/5000. Detects a band of approximately 24, 30 kDa (predicted molecular weight: 24 kDa). Dilution optimised using Chromogenic detection.

## Target

### Function

Complexes with metalloproteinases (such as collagenases) and irreversibly inactivates them by binding to their catalytic zinc cofactor. May form part of a tissue-specific acute response to remodeling stimuli. Known to act on MMP-1, MMP-2, MMP-3, MMP-7, MMP-9, MMP-13, MMP-14 and MMP-15.

### Involvement in disease

Defects in TIMP3 are the cause of Sorsby fundus dystrophy (SFD) [MIM:136900]. SFD is a rare autosomal dominant macular disorder with an age of onset in the fourth decade. It is characterized by loss of central vision from subretinal neovascularization and atrophy of the ocular tissues. Generally, macular disciform degeneration develops in the patients eye within 6 months to 6 years.

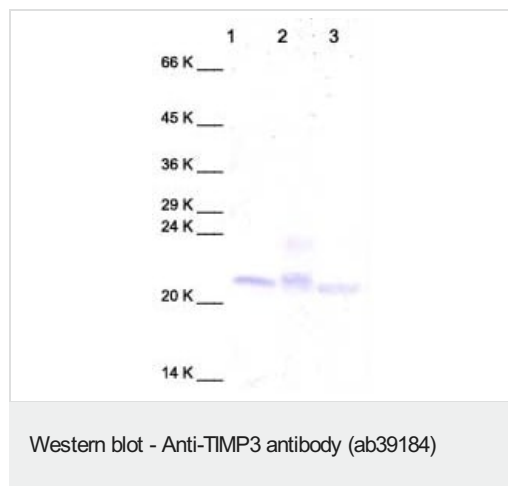
### Sequence similarities

Belongs to the protease inhibitor I35 (TIMP) family.  
Contains 1 NTR domain.

### Cellular localization

Secreted > extracellular space > extracellular matrix.

## Images



**All lanes :** Anti-TIMP3 antibody (ab39184)

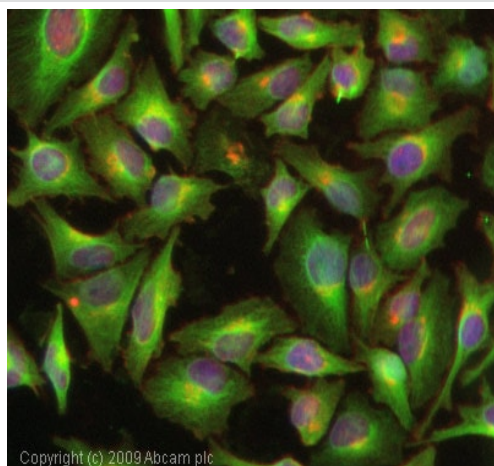
**Lane 1 :** Human TIMP3

**Lane 2 :** Mouse TIMP3

**Lane 3 :** crude control (preparation of extracellular matrix from BHK cells producing recombinant human TIMP-3)

**Predicted band size:** 24 kDa

**Observed band size:** 21 kDa



Immunocytochemistry/ Immunofluorescence - Anti-TIMP3 antibody (ab39184)

ICC/IF image of ab39184 stained HeLa cells. The cells were 4% PFA fixed (10 min) and then incubated in 1%BSA / 10% normal goat serum / 0.3M glycine in 0.1% PBS-Tween for 1h to permeabilise the cells and block non-specific protein-protein interactions. The cells were then incubated with the antibody (ab39184, 1µg/ml) overnight at +4°C. The secondary antibody (green) was Alexa Fluor® 488 goat anti-rabbit IgG (H+L) used at a 1/1000 dilution for 1h. Alexa Fluor® 594 WGA was used to label plasma membranes (red) at a 1/200 dilution for 1h. DAPI was used to stain the cell nuclei (blue) at a concentration of 1.43µM.

**Please note:** All products are "FOR RESEARCH USE ONLY. NOT FOR USE IN DIAGNOSTIC PROCEDURES"

### Our Abpromise to you: Quality guaranteed and expert technical support

- Replacement or refund for products not performing as stated on the datasheet
- Valid for 12 months from date of delivery
- Response to your inquiry within 24 hours
- We provide support in Chinese, English, French, German, Japanese and Spanish
- Extensive multi-media technical resources to help you
- We investigate all quality concerns to ensure our products perform to the highest standards

If the product does not perform as described on this datasheet, we will offer a refund or replacement. For full details of the Abpromise, please visit <https://www.abcam.com/abpromise> or contact our technical team.

### Terms and conditions

- Guarantee only valid for products bought direct from Abcam or one of our authorized distributors