

# Anti-Tissue kallikrein antibody ab217203

2 Images

### Overview

|                            |   |
|----------------------------|---|
| <b>Product name</b>        | Anti-Tissue kallikrein antibody   |
| <b>Description</b>         | Rabbit polyclonal to Tissue kallikrein  |
| <b>Host species</b>        | Rabbit  |
| <b>Tested applications</b> | <b>Suitable for:</b> IHC-P  |
| <b>Species reactivity</b>  | <b>Reacts with:</b> Rat, Human  |
| <b>Immunogen</b>           | Synthetic peptide within Human Tissue kallikrein aa 122-180 conjugated to keyhole limpet haemocyanin. The exact sequence is proprietary.<br>Database link: <a href="#">P06870</a>   |
| <b>Positive control</b>    | Rat kidney tissue; Human breast carcinoma tissue.   |
| <b>General notes</b>       | <p>The Life Science industry has been in the grips of a reproducibility crisis for a number of years. Abcam is leading the way in addressing this with our range of recombinant monoclonal antibodies and knockout edited cell lines for gold-standard validation. Please check that this product meets your needs before purchasing.</p> <p>If you have any questions, special requirements or concerns, please send us an inquiry and/or contact our Support team ahead of purchase. Recommended alternatives for this product can be found below, along with publications, customer reviews and Q&amp;As</p> |

### Properties

|                             |   |
|-----------------------------|---|
| <b>Form</b>                 | Liquid  |
| <b>Storage instructions</b> | Shipped at 4°C. Store at +4°C short term (1-2 weeks). Upon delivery aliquot. Store at -20°C long term. Avoid freeze / thaw cycle.                                       |
| <b>Storage buffer</b>       | <p>pH: 7.40</p> <p>Preservative: 0.02% Proclin 300</p> <p>Constituents: 50% Glycerol (glycerin, glycerine), 1% BSA, 48.98% TBS, 1X</p> <p>Aqueous buffered solution</p> |
| <b>Purity</b>               | Protein A purified  |
| <b>Clonality</b>            | Polyclonal  |
| <b>Isotype</b>              | IgG   |

## Applications

### The Abpromise guarantee

Our **Abpromise guarantee** covers the use of ab217203 in the following tested applications.

The application notes include recommended starting dilutions; optimal dilutions/concentrations should be determined by the end user.

| Application | Abreviews | Notes          |
|-------------|-----------|----------------|
| IHC-P       |           | 1/100 - 1/500. |

## Target

### Function

Glandular kallikreins cleave Met-Lys and Arg-Ser bonds in kininogen to release Lys-bradykinin.

### Tissue specificity

Isoform 2 is expressed in pancreas, salivary glands, kidney, colon, prostate gland, testis, spleen and the colon adenocarcinoma cell line T84.

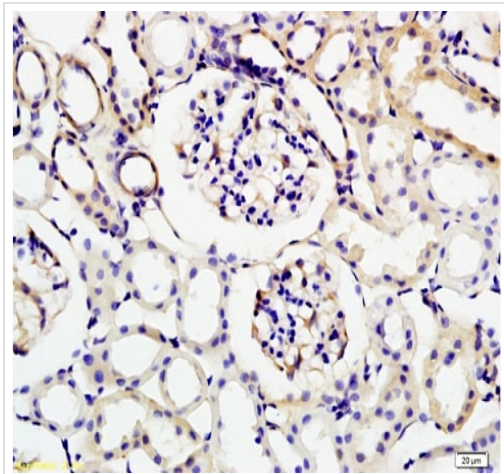
### Sequence similarities

Belongs to the peptidase S1 family. Kallikrein subfamily.  
Contains 1 peptidase S1 domain.

### Post-translational modifications

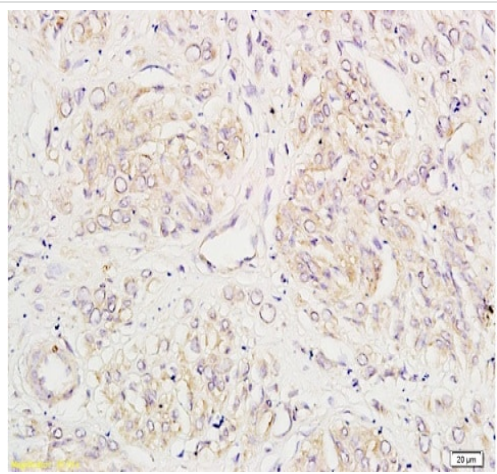
The O-linked polysaccharides on Ser-93, Ser-104 and Ser-167 are probably the mucin type linked to GalNAc. In PubMed:3163150, GalNAc was detected with the corresponding peptides but not located.

## Images



Immunohistochemistry (Formalin/PFA-fixed paraffin-embedded sections) - Anti-Tissue kallikrein antibody (ab217203)

Immunohistochemical analysis of formalin fixed, paraffin embedded Rat kidney tissue labeling Tissue kallikrein with ab217203 at 1/200 dilution followed by conjugation to the secondary antibody and DAB staining.



Immunohistochemical analysis of formalin fixed, paraffin embedded Human breast carcinoma tissue labeling Tissue kallikrein with ab217203 at 1/200 dilution followed by conjugation to the secondary antibody and DAB staining.

Immunohistochemistry (Formalin/PFA-fixed paraffin-embedded sections) - Anti-Tissue kallikrein antibody (ab217203)

**Please note:** All products are "FOR RESEARCH USE ONLY. NOT FOR USE IN DIAGNOSTIC PROCEDURES"

### Our Abpromise to you: Quality guaranteed and expert technical support

- Replacement or refund for products not performing as stated on the datasheet
- Valid for 12 months from date of delivery
- Response to your inquiry within 24 hours
- We provide support in Chinese, English, French, German, Japanese and Spanish
- Extensive multi-media technical resources to help you
- We investigate all quality concerns to ensure our products perform to the highest standards

If the product does not perform as described on this datasheet, we will offer a refund or replacement. For full details of the Abpromise, please visit <https://www.abcam.com/abpromise> or contact our technical team.

### Terms and conditions

- Guarantee only valid for products bought direct from Abcam or one of our authorized distributors