

Product datasheet

Anti-TLE4 antibody ab64833

★ ★ ★ ★ ★ [2 Abreviews](#) [4 References](#) [2 Images](#)

Overview

Product name	Anti-TLE4 antibody
Description	Rabbit polyclonal to TLE4
Host species	Rabbit
Tested applications	Suitable for: WB
Species reactivity	Reacts with: Rat, Human
Immunogen	Synthetic peptide corresponding to Human TLE4 (internal sequence). Database link: Q04727
Positive control	WB: Jurkat, 293, HuvEc cell; rat muscle lysate.
General notes	<p>The Life Science industry has been in the grips of a reproducibility crisis for a number of years. Abcam is leading the way in addressing this with our range of recombinant monoclonal antibodies and knockout edited cell lines for gold-standard validation. Please check that this product meets your needs before purchasing.</p> <p>If you have any questions, special requirements or concerns, please send us an inquiry and/or contact our Support team ahead of purchase. Recommended alternatives for this product can be found below, along with publications, customer reviews and Q&As</p>

Properties

Form	Liquid
Storage instructions	Shipped at 4°C. Store at -20°C. Stable for 12 months at -20°C.
Storage buffer	pH: 7.40 Preservative: 0.02% Sodium azide Constituents: PBS, 50% Glycerol (glycerin, glycerine), 0.87% Sodium chloride
	Without Mg ²⁺ and Ca ²⁺
Purity	Immunogen affinity purified
Clonality	Polyclonal
Isotype	IgG

Applications

The Abpromise guarantee

Our **Abpromise guarantee** covers the use of ab64833 in the following tested applications.

The application notes include recommended starting dilutions; optimal dilutions/concentrations should be determined by the end user.

Application	Abreviews	Notes
WB	★☆☆☆☆ (1)	1/500 - 1/1000. Detects a band of approximately 84 kDa (predicted molecular weight: 84 kDa).

Target

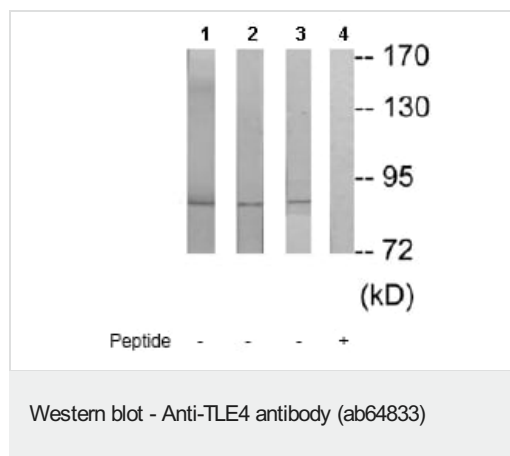
Relevance

TLE4 (Transducin-like enhancer protein 4) is a member of the Groucho family of transcriptional corepressors and inhibits the transcriptional activation mediated by Pax5 and by beta-catenin and TCF family members in Wnt signaling.

Cellular localization

Nuclear

Images



All lanes : Anti-TLE4 antibody (ab64833) at 1/500 dilution

Lane 1 : Jurkat cell extract at 30 µg

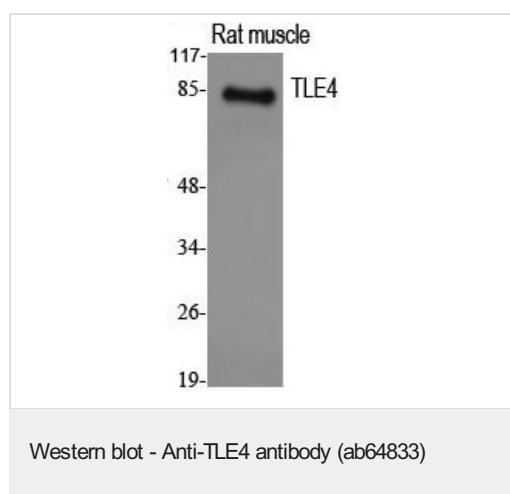
Lane 2 : 293 cell extract at 30 µg

Lane 3 : HuvEc cell extract at 30 µg

Lane 4 : HuvEc cell extract immunising peptide at 10 µg

Predicted band size: 84 kDa

Observed band size: 84 kDa



Anti-TLE4 antibody (ab64833) at 1/1000 dilution + Rat muscle lysate

Predicted band size: 84 kDa

Please note: All products are "FOR RESEARCH USE ONLY. NOT FOR USE IN DIAGNOSTIC PROCEDURES"

Our Abpromise to you: Quality guaranteed and expert technical support

- Replacement or refund for products not performing as stated on the datasheet
- Valid for 12 months from date of delivery
- Response to your inquiry within 24 hours

- We provide support in Chinese, English, French, German, Japanese and Spanish
- Extensive multi-media technical resources to help you
- We investigate all quality concerns to ensure our products perform to the highest standards

If the product does not perform as described on this datasheet, we will offer a refund or replacement. For full details of the Abpromise, please visit <https://www.abcam.com/abpromise> or contact our technical team.

Terms and conditions

- Guarantee only valid for products bought direct from Abcam or one of our authorized distributors