

## Product datasheet

# Anti-TLR7 antibody [4F4] ab28048

[3 References](#) [1 Image](#)

### Overview

---

<b>Product name</b>	Anti-TLR7 antibody [4F4]
<b>Description</b>	Mouse monoclonal [4F4] to TLR7
<b>Host species</b>	Mouse
<b>Tested applications</b>	<b>Suitable for:</b> WB
<b>Species reactivity</b>	<b>Reacts with:</b> Human
<b>Immunogen</b>	Recombinant fragment corresponding to Human TLR7 aa 450-550. Database link: <a href="#">Q9NYK1</a> <a href="#">Run BLAST with</a> <a href="#">Run BLAST with</a>
<b>Positive control</b>	Ramos cell lysates
<b>General notes</b>	<p>This product was changed from ascites to tissue culture supernatant on 28/02/19. Please note that the dilutions may need to be adjusted accordingly. If you have any questions, please do not hesitate to contact our scientific support team.</p> <p>The Life Science industry has been in the grips of a reproducibility crisis for a number of years. Abcam is leading the way in addressing this with our range of recombinant monoclonal antibodies and knockout edited cell lines for gold-standard validation. Please check that this product meets your needs before purchasing.</p> <p>If you have any questions, special requirements or concerns, please send us an inquiry and/or contact our Support team ahead of purchase. Recommended alternatives for this product can be found below, along with publications, customer reviews and Q&amp;As</p>

### Properties

---

<b>Form</b>	Liquid
<b>Storage instructions</b>	Shipped at 4°C. Store at +4°C short term (1-2 weeks). Upon delivery aliquot. Store at -20°C long term.
<b>Storage buffer</b>	pH: 7.40 Preservative: 0.02% Sodium azide Constituents: PBS, 10% Glycerol
<b>Purity</b>	Protein G purified
<b>Clonality</b>	Monoclonal
<b>Clone number</b>	4F4

<b>Myeloma</b>	Sp2/0
<b>Isotype</b>	IgG1
<b>Light chain type</b>	kappa

## Applications

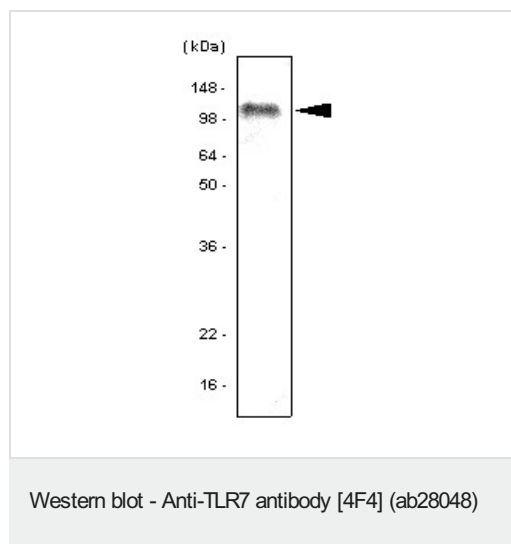
**The Abpromise guarantee** Our **Abpromise guarantee** covers the use of ab28048 in the following tested applications. The application notes include recommended starting dilutions; optimal dilutions/concentrations should be determined by the end user.

Application	Abreviews	Notes
<b>WB</b>		1/500 - 1/2000. Predicted molecular weight: 121 kDa.

## Target

<b>Function</b>	Key component of innate and adaptive immunity. TLRs (Toll-like receptors) control host immune response against pathogens through recognition of molecular patterns specific of microorganisms. TLR7 is a nucleotide-sensing TLR which is activated by single-stranded RNA. Acts via MYD88 and TRAF6, leading to NF-kappa-B activation, cytokine secretion and the inflammatory response.
<b>Tissue specificity</b>	Detected in brain, placenta, spleen, stomach, small intestine, lung and in plasmacytoid pre-dendritic cells.
<b>Sequence similarities</b>	Belongs to the Toll-like receptor family. Contains 27 LRR (leucine-rich) repeats. Contains 1 TIR domain.
<b>Cellular localization</b>	Endoplasmic reticulum membrane. Endosome. Lysosome. Cytoplasmic vesicle > phagosome. Relocalizes from endoplasmic reticulum to endosome and lysosome upon stimulation with agonist.

## Images



Anti-TLR7 antibody [4F4] (ab28048) at 1/1000 dilution + 80 µg  
Ramos cell lysate

### Secondary

goat anti mouse secondary antibody conjugated to HRP

Developed using the ECL technique.

**Predicted band size:** 121 kDa

**Observed band size:** 121 kDa

**This image was generated using the ascites version of the product.**

**Please note:** All products are "FOR RESEARCH USE ONLY. NOT FOR USE IN DIAGNOSTIC PROCEDURES"

### **Our Abpromise to you: Quality guaranteed and expert technical support**

---

- Replacement or refund for products not performing as stated on the datasheet
- Valid for 12 months from date of delivery
- Response to your inquiry within 24 hours
  
- We provide support in Chinese, English, French, German, Japanese and Spanish
- Extensive multi-media technical resources to help you
- We investigate all quality concerns to ensure our products perform to the highest standards

If the product does not perform as described on this datasheet, we will offer a refund or replacement. For full details of the Abpromise, please visit <https://www.abcam.com/abpromise> or contact our technical team.

### **Terms and conditions**

---

- Guarantee only valid for products bought direct from Abcam or one of our authorized distributors