

Product datasheet

Anti-TLR8 antibody ab180610

★★★★★ [5 Abreviews](#) [7 References](#) [3 Images](#)

Overview

Product name	Anti-TLR8 antibody
Description	Rabbit polyclonal to TLR8
Host species	Rabbit
Tested applications	Suitable for: WB, ICC/IF
Species reactivity	Reacts with: Mouse, Rat
Immunogen	Recombinant fragment corresponding to Human TLR8 aa 849-1041. Sequence: HHLFYWDVWFMYVCLAKVKGYSLSSTSQTFYDAYISYDTK DASVTDWVI NELRYHLEESRDKNVLLCLEERDWDPLAIDNLMQSINQS KKTVFLTK KYAKSWNFKTA FYLALQRLMDENMDVIFILLEPVLQHSQY LRLRQRICK SSILQWPDNPKAEGFLWQTLRNVVLTENDSRYNMYVDSI KQY

Database link: [Q9NR97](#)

 [Run BLAST with](#)

 [Run BLAST with](#)

Positive control WB: Mouse liver tissue lysate; ICC/ IF: Mouse and rat spleen.

General notes

The Life Science industry has been in the grips of a reproducibility crisis for a number of years. Abcam is leading the way in addressing this with our range of recombinant monoclonal antibodies and knockout edited cell lines for gold-standard validation. Please check that this product meets your needs before purchasing.

If you have any questions, special requirements or concerns, please send us an inquiry and/or contact our Support team ahead of purchase. Recommended alternatives for this product can be found below, along with publications, customer reviews and Q&As

Properties

Form	Liquid
Storage instructions	Shipped at 4°C. Store at +4°C short term (1-2 weeks). Upon delivery aliquot. Store at -20°C long term. Avoid freeze / thaw cycle.

Storage buffer	pH: 7.30 Preservative: 0.02% Sodium azide Constituents: 49% PBS, 50% Glycerol
Purity	Immunogen affinity purified
Clonality	Polyclonal
Isotype	IgG

Applications

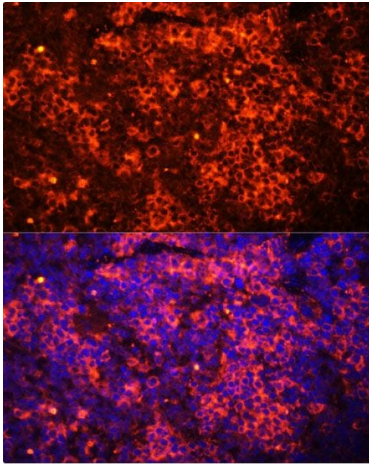
The Abpromise guarantee Our **Abpromise guarantee** covers the use of ab180610 in the following tested applications. The application notes include recommended starting dilutions; optimal dilutions/concentrations should be determined by the end user.

Application	Abreviews	Notes
WB	★★★★★ (1)	1/500 - 1/2000. Predicted molecular weight: 120 kDa.
ICC/IF	★★★★★ (1)	1/50 - 1/200.

Target

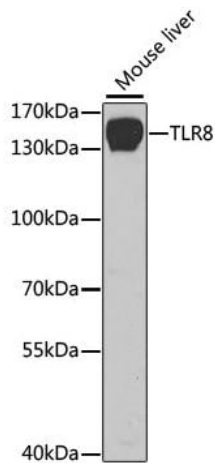
Function	Key component of innate and adaptive immunity. TLRs (Toll-like receptors) control host immune response against pathogens through recognition of molecular patterns specific of microorganisms. Acts via MYD88 and TRAF6, leading to NF-kappa-B activation, cytokine secretion and the inflammatory response.
Tissue specificity	Detected in brain, heart, lung, liver, placenta, in monocytes, and at lower levels in CD11c+ immature dendritic cells.
Sequence similarities	Belongs to the Toll-like receptor family. Contains 23 LRR (leucine-rich) repeats. Contains 1 LRRCT domain. Contains 1 TIR domain.
Cellular localization	Membrane.

Images



Immunofluorescence staining of mouse spleen tissue stained for TLR8 with ab180610 at 1/100 dilution. Nuclei are labeled with DAPI (Blue).

Immunocytochemistry/ Immunofluorescence - Anti-TLR8 antibody (ab180610)



Anti-TLR8 antibody (ab180610) at 1/1000 dilution + Mouse liver tissue lysate at 25 μ g

Secondary

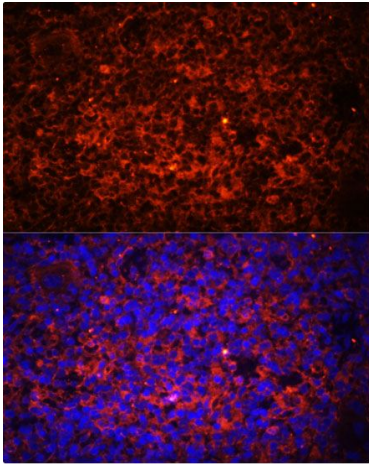
HRP Goat AntiRabbit IgG (H+L)

Developed using the ECL technique.

Predicted band size: 120 kDa

Western blot - Anti-TLR8 antibody (ab180610)

Blocking buffer: 3% nonfat dry milk in TBST.



Immunofluorescence staining of rat spleen tissue stained for TLR8 with ab180610 at 1/100 dilution. Nuclei are labeled with DAPI (Blue).

Immunocytochemistry/ Immunofluorescence - Anti-TLR8 antibody (ab180610)

Please note: All products are "FOR RESEARCH USE ONLY. NOT FOR USE IN DIAGNOSTIC PROCEDURES"

Our Abpromise to you: Quality guaranteed and expert technical support

- Replacement or refund for products not performing as stated on the datasheet
- Valid for 12 months from date of delivery
- Response to your inquiry within 24 hours

- We provide support in Chinese, English, French, German, Japanese and Spanish
- Extensive multi-media technical resources to help you
- We investigate all quality concerns to ensure our products perform to the highest standards

If the product does not perform as described on this datasheet, we will offer a refund or replacement. For full details of the Abpromise, please visit <https://www.abcam.com/abpromise> or contact our technical team.

Terms and conditions

- Guarantee only valid for products bought direct from Abcam or one of our authorized distributors