



## Product datasheet

### Anti-TLX1 antibody ab191270

2 Images

#### Overview

<b>Product name</b>	Anti-TLX1 antibody
<b>Description</b>	Rabbit polyclonal to TLX1
<b>Host species</b>	Rabbit
<b>Tested applications</b>	<b>Suitable for:</b> WB, IHC-P
<b>Species reactivity</b>	<b>Reacts with:</b> Mouse, Human
<b>Immunogen</b>	Synthetic peptide corresponding to Human TLX1 aa 150-250 (internal sequence). Database link: <b><u>P31314</u></b>
	 <b><u>Run BLAST with</u></b>  <b><u>Run BLAST with</u></b>
<b>Positive control</b>	Human kidney tissue; Mouse kidney tissue lysate
<b>General notes</b>	<p>The Life Science industry has been in the grips of a reproducibility crisis for a number of years. Abcam is leading the way in addressing this with our range of recombinant monoclonal antibodies and knockout edited cell lines for gold-standard validation. Please check that this product meets your needs before purchasing.</p> <p>If you have any questions, special requirements or concerns, please send us an inquiry and/or contact our Support team ahead of purchase. Recommended alternatives for this product can be found below, along with publications, customer reviews and Q&amp;As</p>

#### Properties

<b>Form</b>	Liquid
<b>Storage instructions</b>	Shipped at 4°C. Store at +4°C short term (1-2 weeks). Upon delivery aliquot. Store at -20°C long term. Avoid freeze / thaw cycle.
<b>Storage buffer</b>	pH: 7.4 Preservative: 0.09% Sodium azide Constituent: 99% PBS
<b>Purity</b>	Immunogen affinity purified
<b>Clonality</b>	Polyclonal
<b>Isotype</b>	IgG

#### Applications

## The Abpromise guarantee

Our **Abpromise guarantee** covers the use of ab191270 in the following tested applications.

The application notes include recommended starting dilutions; optimal dilutions/concentrations should be determined by the end user.

Application	Abreviews	Notes
WB		1/1000. Predicted molecular weight: 34 kDa.
IHC-P		1/50.

## Target

### Function

Controls the genesis of the spleen. Binds to the DNA sequence 5'-GGCGGTAAGTGG-3'.

### Involvement in disease

Note=A chromosomal aberration involving TLX1 may be a cause of a form of T-cell acute lymphoblastic leukemia (T-ALL). Translocation t(10;14)(q24;q11) with TCRD.

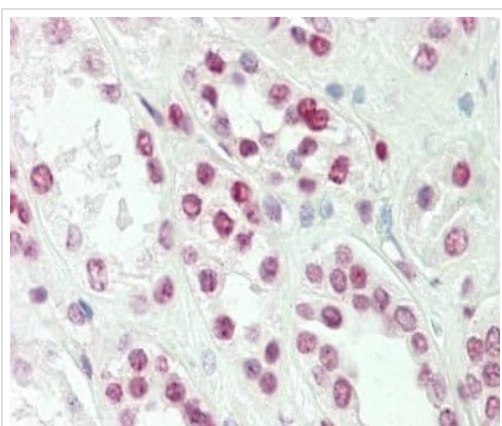
### Sequence similarities

Contains 1 homeobox DNA-binding domain.

### Cellular localization

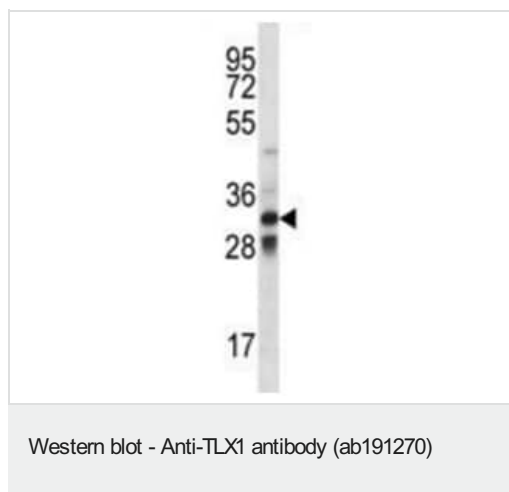
Nucleus.

## Images



Immunohistochemical analysis of paraffin-embedded, formalin-fixed Human kidney tissue labeling TLX1 using ab191270 at 1/50 dilution.

Immunohistochemistry (Formalin/PFA-fixed paraffin-embedded sections) - Anti-TLX1 antibody (ab191270)



Anti-TLX1 antibody (ab191270) at 1/1000 dilution + mouse kidney tissue lysate at 35 µg

**Predicted band size:** 34 kDa

**Please note:** All products are "FOR RESEARCH USE ONLY. NOT FOR USE IN DIAGNOSTIC PROCEDURES"

### Our Abpromise to you: Quality guaranteed and expert technical support

---

- Replacement or refund for products not performing as stated on the datasheet
- Valid for 12 months from date of delivery
- Response to your inquiry within 24 hours
- We provide support in Chinese, English, French, German, Japanese and Spanish
- Extensive multi-media technical resources to help you
- We investigate all quality concerns to ensure our products perform to the highest standards

If the product does not perform as described on this datasheet, we will offer a refund or replacement. For full details of the Abpromise, please visit <https://www.abcam.com/abpromise> or contact our technical team.

### Terms and conditions

---

- Guarantee only valid for products bought direct from Abcam or one of our authorized distributors