

# Anti-TMEM184C antibody ab106719

3 Images

## Overview

<b>Product name</b>	Anti-TMEM184C antibody
<b>Description</b>	Rabbit polyclonal to TMEM184C
<b>Host species</b>	Rabbit
<b>Specificity</b>	ab106719 predicted to not crossreact with other members of the TMEM184 protein family.
<b>Tested applications</b>	<b>Suitable for:</b> IHC-P, WB, ICC/IF
<b>Species reactivity</b>	<b>Reacts with:</b> Mouse
<b>Immunogen</b>	A 15 amino acid peptide near the carboxy terminus of Human TMEM184C (NP_060711).
<b>Positive control</b>	Mouse heart tissue lysate; Mouse heart tissue
<b>General notes</b>	<p>The Life Science industry has been in the grips of a reproducibility crisis for a number of years. Abcam is leading the way in addressing this with our range of recombinant monoclonal antibodies and knockout edited cell lines for gold-standard validation. Please check that this product meets your needs before purchasing.</p> <p>If you have any questions, special requirements or concerns, please send us an inquiry and/or contact our Support team ahead of purchase. Recommended alternatives for this product can be found below, along with publications, customer reviews and Q&amp;As</p>

## Properties

<b>Form</b>	Liquid
<b>Storage instructions</b>	Shipped at 4°C. Store at 4°C (stable for up to 12 months).
<b>Storage buffer</b>	pH: 7.2 Preservative: 0.02% Sodium azide Constituent: PBS
<b>Purity</b>	Immunogen affinity purified
<b>Clonality</b>	Polyclonal
<b>Isotype</b>	IgG

## Applications

The **Abpromise guarantee** Our **Abpromise guarantee** covers the use of ab106719 in the following tested applications.

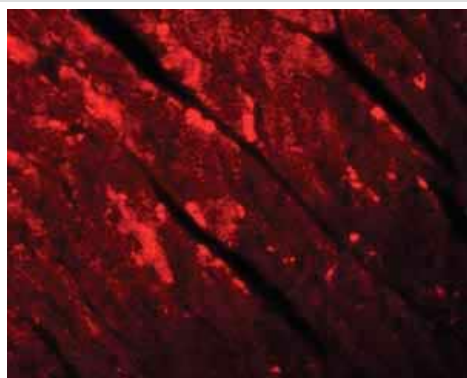
The application notes include recommended starting dilutions; optimal dilutions/concentrations should be determined by the end user.

Application	Abreviews	Notes
IHC-P		Use a concentration of 5 µg/ml.
WB		Use a concentration of 1 - 2 µg/ml. Predicted molecular weight: 50 kDa.
ICC/IF		Use a concentration of 20 µg/ml.

## Target

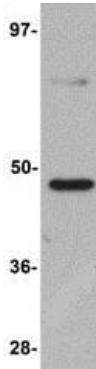
<b>Function</b>	Possible tumor suppressor which may play a role in cell growth.
<b>Tissue specificity</b>	Widely expressed with higher expression in lung, kidney, spleen, pancreas, thymus, prostate, testis, ovary, small intestine and thyroid.
<b>Sequence similarities</b>	Belongs to the TMEM184 family.
<b>Cellular localization</b>	Membrane.

## Images



Immunofluorescence of TMEM184C in mouse heart tissue with ab106719 at 20 µg/mL.

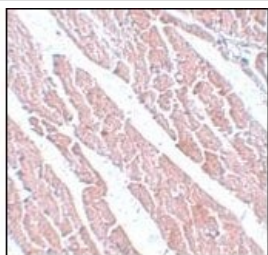
Immunocytochemistry/ Immunofluorescence - Anti-TMEM184C antibody (ab106719)



Western blot - Anti-TMEM184C antibody (ab106719)

Anti-TMEM184C antibody (ab106719) at 1 µg/ml + Mouse heart tissue lysate at 15 µg

**Predicted band size:** 50 kDa



Immunohistochemistry (Formalin/PFA-fixed paraffin-embedded sections) - Anti-TMEM184C antibody (ab106719)

ab106719, at 5 µg/ml, staining paraffin embedded Mouse heart tissue by Immunohistochemistry.

**Please note:** All products are "FOR RESEARCH USE ONLY. NOT FOR USE IN DIAGNOSTIC PROCEDURES"

### Our Abpromise to you: Quality guaranteed and expert technical support

- Replacement or refund for products not performing as stated on the datasheet
- Valid for 12 months from date of delivery
- Response to your inquiry within 24 hours
- We provide support in Chinese, English, French, German, Japanese and Spanish
- Extensive multi-media technical resources to help you
- We investigate all quality concerns to ensure our products perform to the highest standards

If the product does not perform as described on this datasheet, we will offer a refund or replacement. For full details of the Abpromise, please visit <https://www.abcam.com/abpromise> or contact our technical team.

### Terms and conditions

- Guarantee only valid for products bought direct from Abcam or one of our authorized distributors