


Anti-TMPRSS4 antibody ab188816

[3 References](#) [2 Images](#)

Overview

Product name	Anti-TMPRSS4 antibody
Description	Rabbit polyclonal to TMPRSS4
Host species	Rabbit
Tested applications	Suitable for: IHC-P
Species reactivity	Reacts with: Human Predicted to work with: Horse, Dog, Pig, Chimpanzee, Monkey, Gorilla, Common marmoset, Orangutan 
Immunogen	Synthetic peptide corresponding to Human TMPRSS4 (internal sequence). 19 amino acids long. Database link: Q9NRS4
Positive control	Human pancreatic carcinoma, human pancreas tissue.
General notes	<p>The Life Science industry has been in the grips of a reproducibility crisis for a number of years. Abcam is leading the way in addressing this with our range of recombinant monoclonal antibodies and knockout edited cell lines for gold-standard validation. Please check that this product meets your needs before purchasing.</p> <p>If you have any questions, special requirements or concerns, please send us an inquiry and/or contact our Support team ahead of purchase. Recommended alternatives for this product can be found below, along with publications, customer reviews and Q&As</p>

Properties

Form	Liquid
Storage instructions	Shipped at 4°C. Store at +4°C short term (1-2 weeks). Upon delivery aliquot. Store at -20°C long term. Avoid freeze / thaw cycle.
Storage buffer	pH: 7.4 Preservative: 0.1% Sodium azide Constituent: 99% PBS
Purity	Immunogen affinity purified
Clonality	Polyclonal
Isotype	IgG

Applications

The Abpromise guarantee

Our **Abpromise guarantee** covers the use of ab188816 in the following tested applications.

The application notes include recommended starting dilutions; optimal dilutions/concentrations should be determined by the end user.

Application	Abreviews	Notes
IHC-P		Use a concentration of 15 - 20 µg/ml. Perform heat mediated antigen retrieval before commencing with IHC staining protocol.

Target

Function

Probable protease. Seems to be capable of activating ENaC.

Tissue specificity

High levels in pancreatic, gastric, colorectal and ampullary cancer. Very weak expression in normal gastrointestinal and urogenital tract.

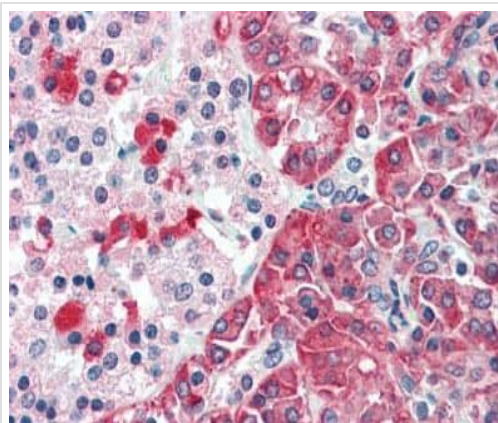
Sequence similarities

Belongs to the peptidase S1 family.
Contains 1 LDL-receptor class A domain.
Contains 1 peptidase S1 domain.
Contains 1 SRCR domain.

Cellular localization

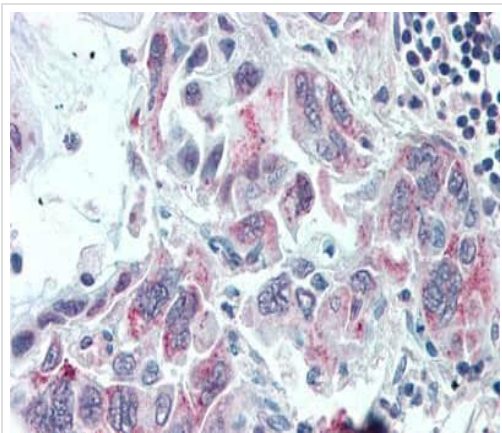
Membrane.

Images



Immunohistochemical analysis of formalin fixed paraffin embedded human pancreas labeling TMPRSS4 with ab188816 at 20 µg/ml

Immunohistochemistry (Formalin/PFA-fixed paraffin-embedded sections) - Anti-TMPRSS4 antibody (ab188816)



Immunohistochemical analysis of formalin fixed paraffin embedded human pancreatic carcinoma labeling TMPRSS4 with ab188816 at 20 µg/ml

Immunohistochemistry (Formalin/PFA-fixed paraffin-embedded sections) - Anti-TMPRSS4 antibody (ab188816)

Please note: All products are "FOR RESEARCH USE ONLY. NOT FOR USE IN DIAGNOSTIC PROCEDURES"

Our Abpromise to you: Quality guaranteed and expert technical support

- Replacement or refund for products not performing as stated on the datasheet
- Valid for 12 months from date of delivery
- Response to your inquiry within 24 hours
- We provide support in Chinese, English, French, German, Japanese and Spanish
- Extensive multi-media technical resources to help you
- We investigate all quality concerns to ensure our products perform to the highest standards

If the product does not perform as described on this datasheet, we will offer a refund or replacement. For full details of the Abpromise, please visit <https://www.abcam.com/abpromise> or contact our technical team.

Terms and conditions

- Guarantee only valid for products bought direct from Abcam or one of our authorized distributors