

# Anti-TNF alpha antibody ab34674

★★★★★ [5 Abreviews](#) [42 References](#) [1 Image](#)

### Overview

|                            |   |
|----------------------------|---|
| <b>Product name</b>        | Anti-TNF alpha antibody   |
| <b>Description</b>         | Rabbit polyclonal to TNF alpha  |
| <b>Host species</b>        | Rabbit  |
| <b>Tested applications</b> | <b>Suitable for:</b> IP, RIA, ICC/IF, WB, Neutralising, IHC-P, ELISA  |
| <b>Species reactivity</b>  | <b>Reacts with:</b> Mouse, Recombinant fragment   |
| <b>Immunogen</b>           | Recombinant full length protein corresponding to Mouse TNF alpha.   |
| <b>General notes</b>       | <p>The Life Science industry has been in the grips of a reproducibility crisis for a number of years. Abcam is leading the way in addressing this with our range of recombinant monoclonal antibodies and knockout edited cell lines for gold-standard validation. Please check that this product meets your needs before purchasing.</p> <p>If you have any questions, special requirements or concerns, please send us an inquiry and/or contact our Support team ahead of purchase. Recommended alternatives for this product can be found below, along with publications, customer reviews and Q&amp;As</p> |

### Properties

|                             |   |
|-----------------------------|---|
| <b>Form</b>                 | Liquid  |
| <b>Storage instructions</b> | Shipped at 4°C. Upon delivery aliquot and store at -20°C or -80°C. Avoid repeated freeze / thaw cycles. |
| <b>Storage buffer</b>       | Preservative: 0.01% Sodium azide<br>Constituents: 0.42% Potassium phosphate, 0.87% Sodium chloride      |
| <b>Purity</b>               | Whole antiserum   |
| <b>Clonality</b>            | Polyclonal  |
| <b>Isotype</b>              | IgG   |

### Applications

**The Abpromise guarantee** Our **Abpromise guarantee** covers the use of ab34674 in the following tested applications.

The application notes include recommended starting dilutions; optimal dilutions/concentrations should be determined by the end user.

| Application  | Abreviews | Notes   |
|--------------|-----------|---|
| IP           |           | Use at an assay dependent concentration.  |
| RIA          |           | Use at an assay dependent concentration.  |
| ICC/IF       | ★★★★★ (1) | Use at an assay dependent concentration.  |
| WB           | ★★★★★ (1) | 1/500 - 1/2000. Detects a band of approximately 17 kDa (predicted molecular weight: 26 kDa).  |
| Neutralising |           | Use at an assay dependent concentration.<br>It is recommended to incubate the sample with the dilution of the antibody for at least 4 hours before being tested. A control of similarly diluted normal rabbit IgG is recommended. |
| IHC-P        | ★★★★★ (2) | Use at an assay dependent concentration.  |
| ELISA        |           | Use at an assay dependent concentration.<br>For use in ELISA formats, this antibody is best used as the second antibody in combination with a monoclonal antibody as a capture antibody.  |

## Target

### Function

Cytokine that binds to TNFRSF1A/TNFR1 and TNFRSF1B/TNFR. It is mainly secreted by macrophages and can induce cell death of certain tumor cell lines. It is potent pyrogen causing fever by direct action or by stimulation of interleukin-1 secretion and is implicated in the induction of cachexia. Under certain conditions it can stimulate cell proliferation and induce cell differentiation.

### Involvement in disease

Genetic variations in TNF are a cause of susceptibility psoriatic arthritis (PSORAS) [MIM:607507]. PSORAS is an inflammatory, seronegative arthritis associated with psoriasis. It is a heterogeneous disorder ranging from a mild, non-destructive disease to a severe, progressive, erosive arthropathy. Five types of psoriatic arthritis have been defined: asymmetrical oligoarthritis characterized by primary involvement of the small joints of the fingers or toes; asymmetrical arthritis which involves the joints of the extremities; symmetrical polyarthritis characterized by a rheumatoidlike pattern that can involve hands, wrists, ankles, and feet; arthritis mutilans, which is a rare but deforming and destructive condition; arthritis of the sacroiliac joints and spine (psoriatic spondylitis).

### Sequence similarities

Belongs to the tumor necrosis factor family.

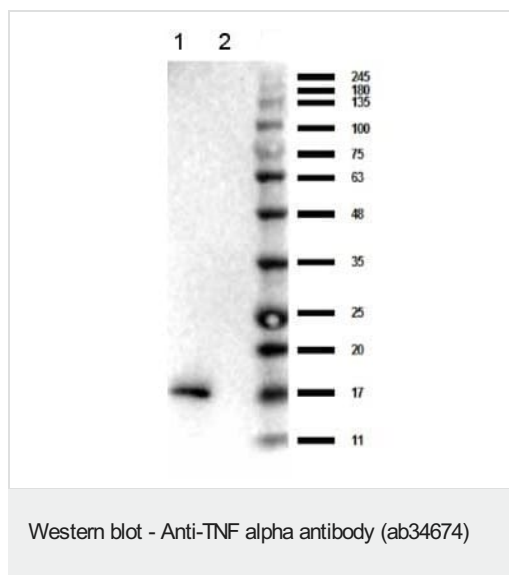
### Post-translational modifications

The soluble form derives from the membrane form by proteolytic processing.  
The membrane form, but not the soluble form, is phosphorylated on serine residues.  
Dephosphorylation of the membrane form occurs by binding to soluble TNFRSF1A/TNFR1.  
O-glycosylated; glycans contain galactose, N-acetylgalactosamine and N-acetylneuraminic acid.

### Cellular localization

Secreted and Cell membrane.

## Images



Anti-TNF alpha antibody (ab34674) at 1/1000 dilution +  
recombinant mouse TNF alpha, 50ng

#### Secondary

HRP rabbit secondary antibody at 1/40000 dilution

**Predicted band size:** 26 kDa

**Observed band size:** 17 kDa

**Please note:** All products are "FOR RESEARCH USE ONLY. NOT FOR USE IN DIAGNOSTIC PROCEDURES"

#### Our Abpromise to you: Quality guaranteed and expert technical support

---

- Replacement or refund for products not performing as stated on the datasheet
- Valid for 12 months from date of delivery
- Response to your inquiry within 24 hours
- We provide support in Chinese, English, French, German, Japanese and Spanish
- Extensive multi-media technical resources to help you
- We investigate all quality concerns to ensure our products perform to the highest standards

If the product does not perform as described on this datasheet, we will offer a refund or replacement. For full details of the Abpromise, please visit <https://www.abcam.com/abpromise> or contact our technical team.

#### Terms and conditions

---

- Guarantee only valid for products bought direct from Abcam or one of our authorized distributors