

Product datasheet

Anti-TNFRSF14/HVEM antibody ab62462

[1 References](#) [3 Images](#)

Overview

Product name	Anti-TNFRSF14/HVEM antibody
Description	Rabbit polyclonal to TNFRSF14/HVEM
Host species	Rabbit
Tested applications	Suitable for: WB, ICC
Species reactivity	Reacts with: Human
Immunogen	Synthetic peptide corresponding to Human TNFRSF14/HVEM (C terminal).
Positive control	Raji cell lysate. Raji cells.
General notes	<p>The Life Science industry has been in the grips of a reproducibility crisis for a number of years. Abcam is leading the way in addressing this with our range of recombinant monoclonal antibodies and knockout edited cell lines for gold-standard validation. Please check that this product meets your needs before purchasing.</p> <p>If you have any questions, special requirements or concerns, please send us an inquiry and/or contact our Support team ahead of purchase. Recommended alternatives for this product can be found below, along with publications, customer reviews and Q&As</p>

Properties

Form	Liquid
Storage instructions	Shipped at 4°C. Store at +4°C.
Storage buffer	pH: 7.2 Preservative: 0.02% Sodium azide Constituent: PBS
Purity	Immunogen affinity purified
Clonality	Polyclonal
Isotype	IgG

Applications

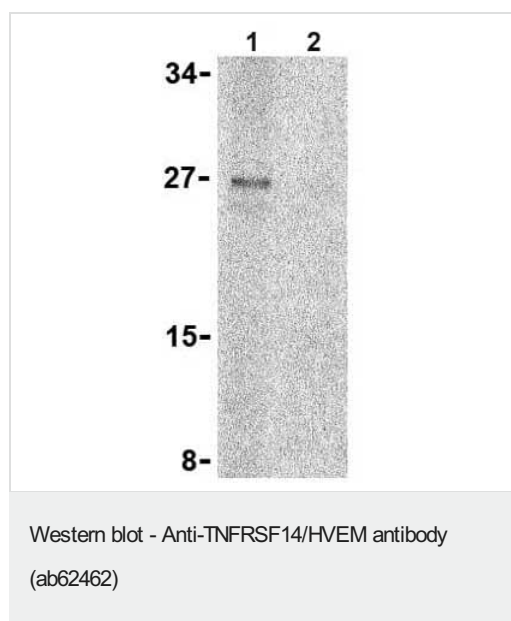
The Abpromise guarantee Our **Abpromise guarantee** covers the use of ab62462 in the following tested applications. The application notes include recommended starting dilutions; optimal dilutions/concentrations should be determined by the end user.

Application	Abreviews	Notes
WB		Use a concentration of 1 - 2 µg/ml. Detects a band of approximately 27 kDa (predicted molecular weight: 31 kDa).
ICC		Use a concentration of 10 - 20 µg/ml.

Target

Function	Receptor for BTLA. Receptor for TNFSF14/LIGHT and homotrimeric TNFSF1/lymphotoxin-alpha. Involved in lymphocyte activation. Plays an important role in HSV pathogenesis because it enhanced the entry of several wild-type HSV strains of both serotypes into CHO cells, and mediated HSV entry into activated human T-cells.
Tissue specificity	Widely expressed, with the highest expression in lung, spleen and thymus.
Sequence similarities	Contains 3 TNFR-Cys repeats.
Post-translational modifications	N-glycosylated.
Cellular localization	Membrane.

Images



All lanes : Anti-TNFRSF14/HVEM antibody (ab62462) at 2 µg/ml

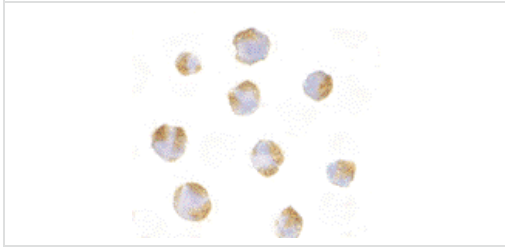
Lane 1 : Raji cell lysate with no blocking peptide

Lane 2 : Raji cell lysate with blocking peptide

Lysates/proteins at 15 µg per lane.

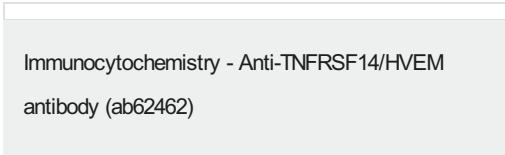
Predicted band size: 31 kDa

Observed band size: 27 kDa



Immunocytochemistry - Anti-TNFRSF14/HVEM antibody (ab62462)

Immunocytochemistry of TNFRSF14/HVEM in Raji cells with ab62462 antibody at 10 µg/ml.



Immunocytochemistry - Anti-TNFRSF14/HVEM antibody (ab62462)

Immunofluorescence of TNFRSF14/HVEM in Raji cells using ab62462 at 20 µg/ml.

Please note: All products are "FOR RESEARCH USE ONLY. NOT FOR USE IN DIAGNOSTIC PROCEDURES"

Our Abpromise to you: Quality guaranteed and expert technical support

- Replacement or refund for products not performing as stated on the datasheet
- Valid for 12 months from date of delivery
- Response to your inquiry within 24 hours
- We provide support in Chinese, English, French, German, Japanese and Spanish
- Extensive multi-media technical resources to help you
- We investigate all quality concerns to ensure our products perform to the highest standards

If the product does not perform as described on this datasheet, we will offer a refund or replacement. For full details of the Abpromise, please visit <https://www.abcam.com/abpromise> or contact our technical team.

Terms and conditions

- Guarantee only valid for products bought direct from Abcam or one of our authorized distributors