

Product datasheet

Anti-TOMM20 antibody [EPR15581-39] - BSA and Azide free ab220822

Recombinant RabMAb

[3 References](#) [5 Images](#)

Overview

Product name	Anti-TOMM20 antibody [EPR15581-39] - BSA and Azide free
Description	Rabbit monoclonal [EPR15581-39] to TOMM20 - BSA and Azide free
Host species	Rabbit
Tested applications	Suitable for: Flow Cyt (Intra), WB, IHC-P, ICC/IF
Species reactivity	Reacts with: Mouse, Rat, Human
Immunogen	Recombinant fragment. This information is proprietary to Abcam and/or its suppliers.
Positive control	HepG2 and HeLa whole cell lysate (ab150035); Human endometrial adenocarcinoma and mouse cardiac muscle tissues; HeLa and NCI-H2228 cells.
General notes	<p>ab220822 is the carrier-free version of ab186734.</p> <p>Our carrier-free antibodies are typically supplied in a PBS-only formulation, purified and free of BSA, sodium azide and glycerol. The carrier-free buffer and high concentration allow for increased conjugation efficiency.</p> <p>This conjugation-ready format is designed for use with fluorochromes, metal isotopes, oligonucleotides, and enzymes, which makes them ideal for antibody labelling, functional and cell-based assays, flow-based assays (e.g. mass cytometry) and Multiplex Imaging applications.</p> <p>Use our conjugation kits for antibody conjugates that are ready-to-use in as little as 20 minutes with <1 minute hands-on-time and 100% antibody recovery: available for fluorescent dyes, HRP, biotin and gold.</p> <p>This product is compatible with the Maxpar[®] Antibody Labeling Kit from Fluidigm, without the need for antibody preparation. Maxpar[®] is a trademark of Fluidigm Canada Inc.</p> <p>Our RabMAb[®] technology is a patented hybridoma-based technology for making rabbit monoclonal antibodies. For details on our patents, please refer to RabMAb[®] patents.</p>

Properties

Form	Liquid
Storage instructions	Shipped at 4°C. Store at +4°C. Do Not Freeze.

Storage buffer	pH: 7.2 Constituent: PBS
Carrier free	Yes
Purity	Protein A purified
Clonality	Monoclonal
Clone number	EPR15581-39
Isotype	IgG

Applications

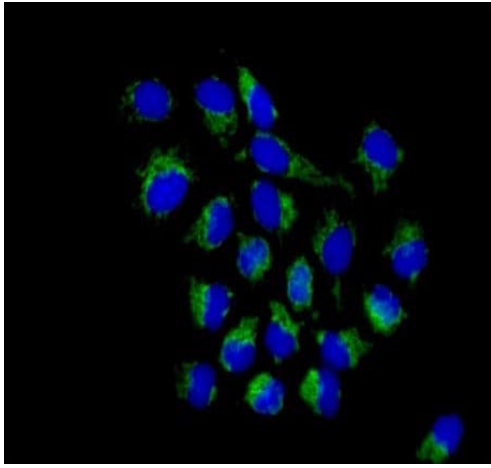
The Abpromise guarantee Our **Abpromise guarantee** covers the use of ab220822 in the following tested applications. The application notes include recommended starting dilutions; optimal dilutions/concentrations should be determined by the end user.

Application	Abreviews	Notes
Flow Cyt (Intra)		Use at an assay dependent concentration. ab199376 - Rabbit monoclonal IgG, is suitable for use as an isotype control with this antibody.
WB		Use at an assay dependent concentration. Detects a band of approximately 16 kDa (predicted molecular weight: 16 kDa).
IHC-P		Use at an assay dependent concentration. Perform heat mediated antigen retrieval with Tris/EDTA buffer pH 9.0 before commencing with IHC staining protocol.
ICC/IF		Use at an assay dependent concentration.

Target

Function	Central component of the receptor complex responsible for the recognition and translocation of cytosolically synthesized mitochondrial preproteins. Together with TOM22 functions as the transit peptide receptor at the surface of the mitochondrion outer membrane and facilitates the movement of preproteins into the TOM40 translocation pore.
Sequence similarities	Belongs to the Tom20 family.
Cellular localization	Mitochondrion outer membrane.

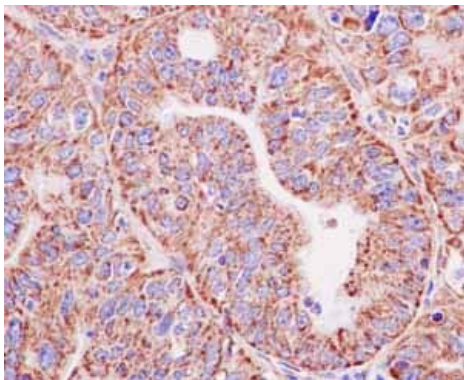
Images



Immunocytochemistry/ Immunofluorescence - Anti-TOMM20 antibody [EPR15581-39] - BSA and Azide free (ab220822)

Immunofluorescence analysis of paraformaldehyde-fixed HeLa cells, labeling TOMM20 (green) with **ab186734** at 1/250 dilution. Alexa Fluor®488-conjugated goat anti-rabbit IgG was used as a secondary antibody at 1/200 dilution. Nuclei were counterstained with DAPI (blue).

This data was developed using the same antibody clone in a different buffer formulation containing PBS, BSA, glycerol, and sodium azide (**ab186734**).

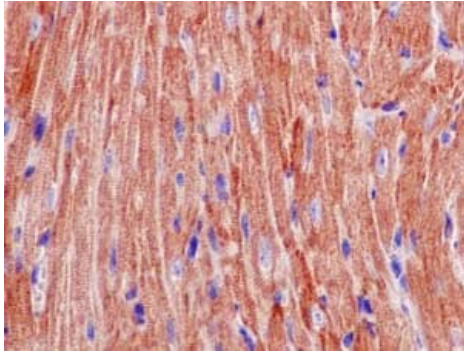


Immunohistochemistry (Formalin/PFA-fixed paraffin-embedded sections) - Anti-TOMM20 antibody [EPR15581-39] - BSA and Azide free (ab220822)

Immunohistochemical analysis of paraffin-embedded Human endometrial adenocarcinoma tissue, labeling TOMM20 with **ab186734** at 1/100 dilution. Detected using HRP Polymer for Rabbit IgG and counter-stained using hematoxylin.

This data was developed using the same antibody clone in a different buffer formulation containing PBS, BSA, glycerol, and sodium azide (**ab186734**).

Perform heat mediated antigen retrieval with EDTA buffer pH 9 before commencing with IHC staining protocol.

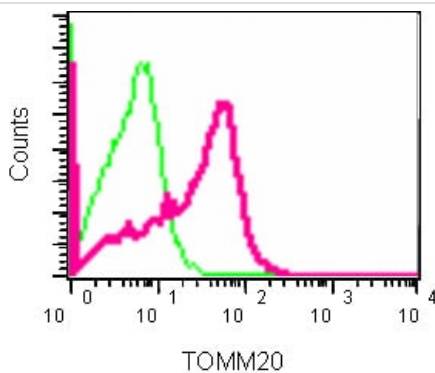


Immunohistochemistry (Formalin/PFA-fixed paraffin-embedded sections) - Anti-TOMM20 antibody [EPR15581-39] - BSA and Azide free (ab220822)

Immunohistochemical analysis of paraffin-embedded mouse cardiac muscle tissue, labeling TOMM20 with **ab186734** at 1/100 dilution. Detected using HRP Polymer for Rabbit IgG and counter-stained using hematoxylin.

This data was developed using the same antibody clone in a different buffer formulation containing PBS, BSA, glycerol, and sodium azide (**ab186734**).

Perform heat mediated antigen retrieval with EDTA buffer pH 9 before commencing with IHC staining protocol.

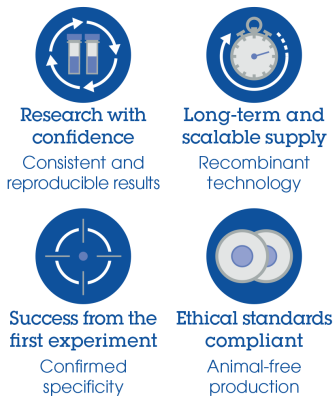


Flow Cytometry (Intracellular) - Anti-TOMM20 antibody [EPR15581-39] - BSA and Azide free (ab220822)

Intracellular Flow Cytometry analysis of TOMM20 expression in NCI-H2228 cells using **ab186734** at 1/40 dilution (red) and a rabbit IgG as negative control (green).

This data was developed using the same antibody clone in a different buffer formulation containing PBS, BSA, glycerol, and sodium azide (**ab186734**).

Why choose a recombinant antibody?



Anti-TOMM20 antibody [EPR15581-39] - BSA and Azide free (ab220822)

Please note: All products are "FOR RESEARCH USE ONLY. NOT FOR USE IN DIAGNOSTIC PROCEDURES"

Our Abpromise to you: Quality guaranteed and expert technical support

- Replacement or refund for products not performing as stated on the datasheet
- Valid for 12 months from date of delivery
- Response to your inquiry within 24 hours

- We provide support in Chinese, English, French, German, Japanese and Spanish
- Extensive multi-media technical resources to help you
- We investigate all quality concerns to ensure our products perform to the highest standards

If the product does not perform as described on this datasheet, we will offer a refund or replacement. For full details of the Abpromise, please visit <https://www.abcam.com/abpromise> or contact our technical team.

Terms and conditions

- Guarantee only valid for products bought direct from Abcam or one of our authorized distributors