

Anti-TOMM22/TOM22 antibody [4G4] ab57523

[13 References](#) [6 Images](#)

Overview

Product name	Anti-TOMM22/TOM22 antibody [4G4]
Description	Mouse monoclonal [4G4] to TOMM22/TOM22
Host species	Mouse
Tested applications	Suitable for: WB, IHC-P, Flow Cyt, ICC/IF
Species reactivity	Reacts with: Mouse, Human
Immunogen	Recombinant full length protein (GST-tag) corresponding to Human TOMM22/TOM22 aa 1-142. Sequence: MAAAVAAAGAGEPQSPDELLPKGDAEKPEEELEEDDDE ELDETLSERLWG LTEMFPERVRSAAAGATFDLSLFVAQKMYRFSRAALWIGTT SFMLVLPVV FETEKLMQEQQQLQQRQILLGPNTGLSGGMPGALPSLP GKI

Database link: [Q9NS69](#)

 [Run BLAST with](#)

 [Run BLAST with](#)

Positive control IHC-P: Human small Intestine. ICC/IF: HeLa cell. WB: NIH/3T3 cell lysate. Flow cyt: HeLa cells.

General notes This product was changed from ascites to tissue culture supernatant on 15 May 2019. Please note that the dilutions may need to be adjusted accordingly. If you have any questions, please do not hesitate to contact our scientific support team.

The Life Science industry has been in the grips of a reproducibility crisis for a number of years. Abcam is leading the way in addressing this with our range of recombinant monoclonal antibodies and knockout edited cell lines for gold-standard validation. Please check that this product meets your needs before purchasing.

If you have any questions, special requirements or concerns, please send us an inquiry and/or contact our Support team ahead of purchase. Recommended alternatives for this product can be found below, along with publications, customer reviews and Q&As

Properties

Form	Liquid
Storage instructions	Shipped at 4°C. Upon delivery aliquot and store at -20°C or -80°C. Avoid repeated freeze / thaw

	cycles.
Storage buffer	pH: 7.4
Purity	Tissue culture supernatant
Purification notes	Purified from TCS.
Clonality	Monoclonal
Clone number	4G4
Isotype	IgG2a
Light chain type	kappa

Applications

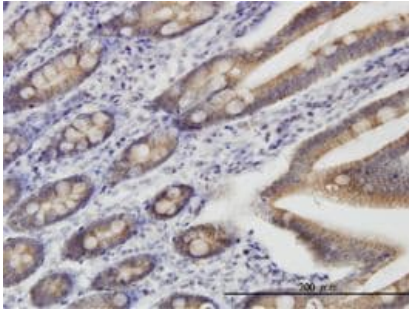
The Abpromise guarantee Our **Abpromise guarantee** covers the use of ab57523 in the following tested applications. The application notes include recommended starting dilutions; optimal dilutions/concentrations should be determined by the end user.

Application	Abreviews	Notes
WB		Use at an assay dependent concentration. Predicted molecular weight: 15 kDa.
IHC-P		Use at an assay dependent concentration.
Flow Cyt		Use at an assay dependent concentration. ab170191 - Mouse monoclonal IgG2a, is suitable for use as an isotype control with this antibody.
ICC/IF		Use at an assay dependent concentration.

Target

Cellular localization Mitochondrion outer membrane; Single-pass membrane protein

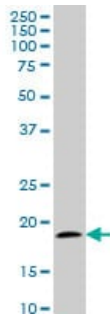
Images



Immunohistochemistry (Formalin/PFA-fixed paraffin-embedded sections) - Anti-TOMM22/TOM22 antibody [4G4] (ab57523)

TOMM22/TOM22 antibody (ab57523) used in immunohistochemistry at 3ug/ml on formalin fixed and paraffin embedded human small intestine.

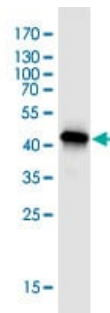
This image was generated using the ascites version of the product.



Western blot - Anti-TOMM22/TOM22 antibody [4G4] (ab57523)

TOMM22/TOM22 antibody (ab57523) at 1ug/lane + NIH/3T3 cell lysate at 25ug/lane.

This image was generated using the ascites version of the product.

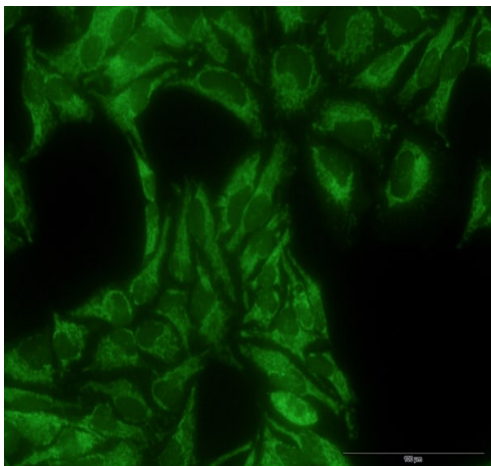


Western blot - Anti-TOMM22/TOM22 antibody [4G4] (ab57523)

Anti-TOMM22/TOM22 antibody [4G4] (ab57523) + immunogen peptide, Full length TOMM22 / TOM22 with GST tag.

Predicted band size: 15 kDa

GST tag MW is 26kDa.



Immunocytochemistry/ Immunofluorescence - Anti-TOMM22/TOM22 antibody [4G4] (ab57523)

Immunocytochemistry/ Immunofluorescence of TOMM22 in HeLa cell using ab57523 at 10 µg/ml.

Immunocytochemistry/ Immunofluorescence - Anti-TOMM22/TOM22 antibody [4G4] (ab57523)

ICC/IF image of ab57523 stained HeLa cells. The cells were 4% formaldehyde fixed (10 min) and then incubated in 1%BSA / 10% normal goat serum / 0.3M glycine in 0.1% PBS-Tween for 1h to permeabilise the cells and block non-specific protein-protein interactions. The cells were then incubated with the antibody (ab57523, 10µg/ml) overnight at +4°C. The secondary antibody (green) was Alexa Fluor® 488 goat anti-mouse IgG (H+L) used at a 1/1000 dilution for 1h. Alexa Fluor® 594 WGA was used to label plasma membranes (red) at a 1/200 dilution for 1h. DAPI was used to stain the cell nuclei (blue) at a concentration of 1.43µM.

This image was generated using the ascites version of the product.

Flow Cytometry - Anti-TOMM22/TOM22 antibody [4G4] (ab57523)

Overlay histogram showing HeLa cells stained with ab57523 (red line). The cells were fixed with 80% methanol (5 min) and then permeabilized with 0.1% PBS-Tween for 20 min. The cells were then incubated in 1x PBS / 10% normal goat serum / 0.3M glycine to block non-specific protein-protein interactions followed by the antibody (ab57523, 1µg/1x10⁶ cells) for 30 min at 22°C. The secondary antibody used was DyLight® 488 goat anti-mouse IgG

(H+L) (**ab96879**) at 1/500 dilution for 30 min at 22°C. Isotype control antibody (black line) was mouse IgG2a [ICIGG2A] (**ab91361**, 1µg/1x10⁶ cells) used under the same conditions. Acquisition of >5,000 events was performed.

This image was generated using the ascites version of the product.

Please note: All products are "FOR RESEARCH USE ONLY. NOT FOR USE IN DIAGNOSTIC PROCEDURES"

Our Abpromise to you: Quality guaranteed and expert technical support

- Replacement or refund for products not performing as stated on the datasheet
- Valid for 12 months from date of delivery
- Response to your inquiry within 24 hours
- We provide support in Chinese, English, French, German, Japanese and Spanish
- Extensive multi-media technical resources to help you
- We investigate all quality concerns to ensure our products perform to the highest standards

If the product does not perform as described on this datasheet, we will offer a refund or replacement. For full details of the Abpromise, please visit <https://www.abcam.com/abpromise> or contact our technical team.

Terms and conditions

- Guarantee only valid for products bought direct from Abcam or one of our authorized distributors