

Product datasheet

Anti-Topoisomerase II alpha (phospho T1343) antibody [EP1054Y] α b52853

Recombinant RabMAb

4 Images

Overview

Product name	Anti-Topoisomerase II alpha (phospho T1343) antibody [EP1054Y]
Description	Rabbit monoclonal [EP1054Y] to Topoisomerase II alpha (phospho T1343)
Host species	Rabbit
Tested applications	Suitable for: IHC-P, WB, ICC/IF Unsuitable for: Flow Cyt or IP
Species reactivity	Reacts with: Human
Immunogen	Synthetic peptide. This information is proprietary to Abcam and/or its suppliers.
Positive control	WB: HeLa cell lysates. IHC-P: Human cervical carcinoma tissue. ICC/IF: HeLa cells
General notes	<p>This product is a recombinant monoclonal antibody, which offers several advantages including:</p> <ul style="list-style-type: none"> - High batch-to-batch consistency and reproducibility - Improved sensitivity and specificity - Long-term security of supply - Animal-free production <p>For more information see here.</p> <p>Our RabMAb[®] technology is a patented hybridoma-based technology for making rabbit monoclonal antibodies. For details on our patents, please refer to RabMAb[®] patents.</p> <p>Mouse, Rat: We have preliminary internal testing data to indicate this antibody may not react with these species. Please contact us for more information.</p>

Properties

Form	Liquid
Storage instructions	Shipped at 4°C. Store at -20°C. Stable for 12 months at -20°C.
Storage buffer	<p>pH: 7.20</p> <p>Preservative: 0.01% Sodium azide</p> <p>Constituents: 9% PBS, 40% Glycerol (glycerin, glycerine), 0.05% BSA, 50% Tissue culture supernatant</p>
Purity	Protein A purified

Clonality	Monoclonal
Clone number	EP1054Y
Isotype	IgG

Applications

The Abpromise guarantee Our **Abpromise guarantee** covers the use of ab52853 in the following tested applications. The application notes include recommended starting dilutions; optimal dilutions/concentrations should be determined by the end user.

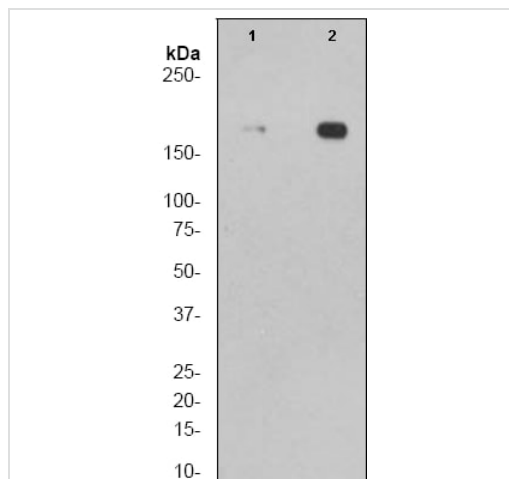
Application	Abreviews	Notes
IHC-P		Use at an assay dependent concentration. Perform heat mediated antigen retrieval with citrate buffer pH 6 before commencing with IHC staining protocol.
WB		1/1000. Detects a band of approximately 174 kDa (predicted molecular weight: 174 kDa).
ICC/IF		1/50 - 1/100.

Application notes Is unsuitable for Flow Cyt or IP.

Target

Function	Control of topological states of DNA by transient breakage and subsequent rejoining of DNA strands. Topoisomerase II makes double-strand breaks.
Sequence similarities	Belongs to the type II topoisomerase family.
Post-translational modifications	Phosphorylation has no effect on catalytic activity.
Cellular localization	Cytoplasm. Nucleus > nucleoplasm. Generally located in the nucleoplasm.

Images



Western blot - Anti-Topoisomerase II alpha (phospho T1343) antibody [EP1054Y] (ab52853)

All lanes : Anti-Topoisomerase II alpha (phospho T1343) antibody [EP1054Y] (ab52853) at 1/1000 dilution

Lane 1 : HeLa cell lysate treated with AP

Lane 2 : HeLa cell lysate untreated

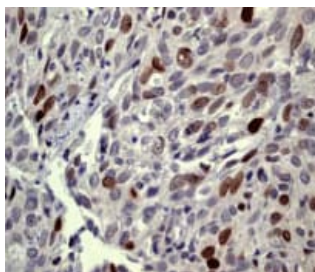
Lysates/proteins at 10 µg per lane.

Secondary

All lanes : goat anti-rabbit HRP at 1/2000 dilution

Predicted band size: 174 kDa

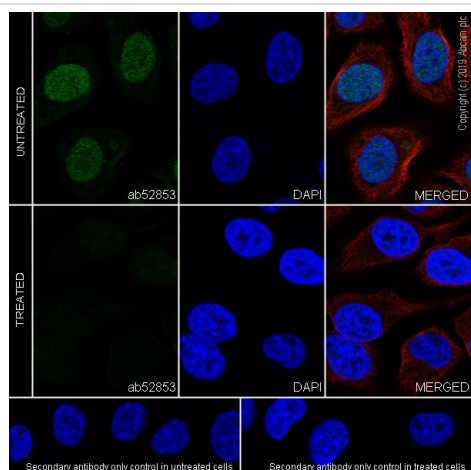
Observed band size: 174 kDa



Immunohistochemistry (Formalin/PFA-fixed paraffin-embedded sections) - Anti-Topoisomerase II alpha (phospho T1343) antibody [EP1054Y] (ab52853)

ab52853 at 1/100 dilution staining Topoisomerase II alpha in paraffin embedded human cervical carcinoma tissue by Immunohistochemistry.

Perform heat mediated antigen retrieval with citrate buffer pH 6 before commencing with IHC staining protocol.



Immunocytochemistry/ Immunofluorescence - Anti-Topoisomerase II alpha (phospho T1343) antibody [EP1054Y] (ab52853)

Immunocytochemistry analysis of HeLa (human cervix adenocarcinoma epithelial cell) labeling Topoisomerase II alpha with purified ab52853 at 1/50 dilution (4 µg/ml). Cells were fixed with 4% Paraformaldehyde and permeabilised with 0.1% tritonX-100. Goat anti rabbit IgG (Alexa Fluor® 488, **ab150077**) at 1/1000 (2 µg/ml) was used as the secondary antibody. **ab195889** Anti-alpha Tubulin antibody [DM1A] - Microtubule Marker (Alexa Fluor® 594) 1/200 (2.14 µg/ml) was used as counterstain. Nuclei were stained blue with DAPI.

Negative control: PBS instead of the primary antibody.

Why choose a recombinant antibody?



Research with confidence
Consistent and reproducible results



Long-term and scalable supply
Recombinant technology



Success from the first experiment
Confirmed specificity



Ethical standards compliant
Animal-free production

Anti-Topoisomerase II alpha (phospho T1343)
antibody [EP1054Y] (ab52853)

Please note: All products are "FOR RESEARCH USE ONLY. NOT FOR USE IN DIAGNOSTIC PROCEDURES"

Our Abpromise to you: Quality guaranteed and expert technical support

- Replacement or refund for products not performing as stated on the datasheet
- Valid for 12 months from date of delivery
- Response to your inquiry within 24 hours
- We provide support in Chinese, English, French, German, Japanese and Spanish
- Extensive multi-media technical resources to help you
- We investigate all quality concerns to ensure our products perform to the highest standards

If the product does not perform as described on this datasheet, we will offer a refund or replacement. For full details of the Abpromise, please visit <https://www.abcam.com/abpromise> or contact our technical team.

Terms and conditions

- Guarantee only valid for products bought direct from Abcam or one of our authorized distributors