


Product datasheet

Anti-Torsin A/DYT1 antibody ab34540

★★★★★ [2 Abreviews](#) [32 References](#) [3 Images](#)

Overview

Product name	Anti-Torsin A/DYT1 antibody
Description	Rabbit polyclonal to Torsin A/DYT1
Host species	Rabbit
Specificity	The immunogen used to raise this antibody has 92% homology with the human Torsin A/DYT1 protein. Some customers have successfully used ab34540 in human tissue. Please contact Abcam Scientific Support for more information.
Tested applications	Suitable for: IHC-FoFr, ICC/IF, WB
Species reactivity	Reacts with: Mouse, Rat Predicted to work with: Human 
Immunogen	Synthetic peptide corresponding to Rat Torsin A/DYT1 aa 300 to the C-terminus (C terminal) conjugated to keyhole limpet haemocyanin. (Peptide available as ab35510 , ab35511)
Positive control	ICC/IF: Neuro2a cells
General notes	<p>The Life Science industry has been in the grips of a reproducibility crisis for a number of years. Abcam is leading the way in addressing this with our range of recombinant monoclonal antibodies and knockout edited cell lines for gold-standard validation. Please check that this product meets your needs before purchasing.</p> <p>If you have any questions, special requirements or concerns, please send us an inquiry and/or contact our Support team ahead of purchase. Recommended alternatives for this product can be found below, along with publications, customer reviews and Q&As</p>

Properties

Form	Liquid
Storage instructions	Shipped at 4°C. Store at +4°C short term (1-2 weeks). Upon delivery aliquot. Store at -20°C or -80°C. Avoid freeze / thaw cycle.
Storage buffer	pH: 7.40 Preservative: 0.02% Sodium azide Constituent: PBS

Batches of this product that have a concentration < 1mg/ml may have BSA added as a stabilising

agent. If you would like information about the formulation of a specific lot, please contact our scientific support team who will be happy to help.

Purity	Immunogen affinity purified
Clonality	Polyclonal
Isotype	IgG

Applications

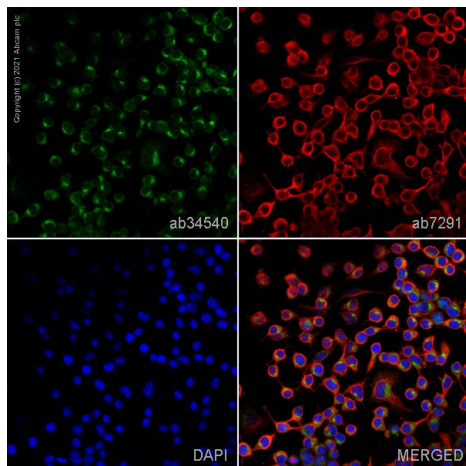
The Abpromise guarantee Our **Abpromise guarantee** covers the use of ab34540 in the following tested applications.

The application notes include recommended starting dilutions; optimal dilutions/concentrations should be determined by the end user.

Application	Abreviews	Notes
IHC-FoFr	★★★★★ (1)	Use at an assay dependent concentration.
ICC/IF		Use a concentration of 1 µg/ml.
WB	★★★★★ (1)	Use a concentration of 1 µg/ml. Detects a band of approximately 38 kDa (predicted molecular weight: 38 kDa).

Target

Images

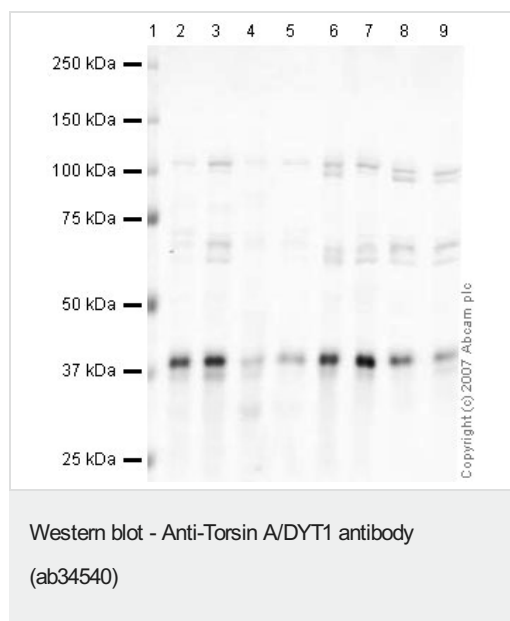


Immunocytochemistry/ Immunofluorescence - Anti-Torsin A/DYT1 antibody (ab34540)

ab34540 staining Torsin A/DYT1 in Neuro2a cells. The cells were fixed with 4% paraformaldehyde (10 min), permeabilized with 0.1% PBS-Triton X-100 for 5 minutes and then blocked with 1% BSA/10% normal goat serum/0.3M glycine in 0.1% PBS-Tween for 1h. The cells were then incubated overnight at 4°C with ab34540 at 1 µg/ml and **ab7291**, Mouse monoclonal [DM1A] to alpha Tubulin - Loading Control. Cells were then incubated with **ab150081**, Goat polyclonal Secondary Antibody to Rabbit IgG - H&L (Alexa Fluor® 488), pre-adsorbed at 1/1000 dilution (shown in green) and **ab150120**, Goat polyclonal Secondary Antibody to Mouse IgG - H&L (Alexa Fluor® 594), pre-adsorbed at 1/1000 dilution (shown in pseudocolour red). Nuclear DNA was labelled with DAPI (shown in blue).

Also suitable in cells fixed with 100% methanol (5 min).

Image was acquired with a confocal microscope (Leica-Microsystems TCS SP8) and a single confocal section is shown.



All lanes : Anti-Torsin A/DYT1 antibody (ab34540) at 1 µg/ml

Lane 1 : Marker

Lane 2 : Mouse Brain at 10 µg

Lane 3 : Testis (Mouse) Whole Cell Lysate - normal tissue at 10 µg

Lane 4 : Mouse Heart Mouse Tissue Lysate at 10 µg

Lane 5 : Mouse skeletal muscle tissue lysate - total protein ([ab29711](#)) at 10 µg

Lane 6 : Mouse Fetal lysate - 14 Days old Tissue Lysate at 10 µg

Lane 7 : Mouse brain tissue lysate - total protein (0 days) ([ab7188](#)) at 10 µg

Lane 8 : Mouse Embryonic Fibroblast 1 at 10 µg

Lane 9 : NIH/3T3 whole cell lysate ([ab7179](#)) at 10 µg

Secondary

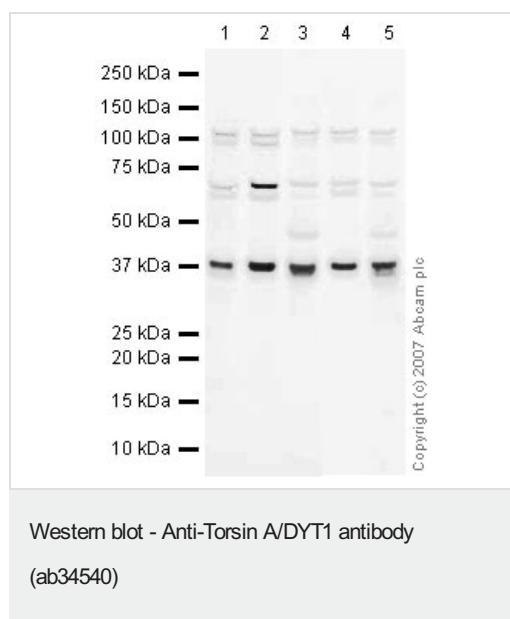
All lanes : IRDye 680 Conjugated Goat Anti-Rabbit IgG (H+L) at 1/15000 dilution

Performed under reducing conditions.

Predicted band size: 38 kDa

Observed band size: 38 kDa

Additional bands at: 105 kDa, 65 kDa. We are unsure as to the identity of these extra bands.



All lanes : Anti-Torsin A/DYT1 antibody (ab34540) at 1 µg/ml

Lane 1 : NIH/3T3 whole cell lysate ([ab7179](#))

Lane 2 : MEF1 (Mouse embryonic fibroblast cell line) Whole Cell Lysate

Lane 3 : Liver (Mouse) Tissue Lysate - normal tissue

Lane 4 : PC12 (Rat adrenal pheochromocytoma cell line) Whole Cell Lysate

Lane 5 : Liver (Rat) Tissue Lysate

Lysates/proteins at 10 µg per lane.

Secondary

All lanes : IRDye 680 Conjugated Goat Anti-Rabbit IgG at 1/10000 dilution

Performed under reducing conditions.

Predicted band size: 38 kDa

Observed band size: 38 kDa

Additional bands at: 65 kDa, 65 kDa. We are unsure as to the identity of these extra bands.

Please note: All products are "FOR RESEARCH USE ONLY. NOT FOR USE IN DIAGNOSTIC PROCEDURES"

Our Abpromise to you: Quality guaranteed and expert technical support

- Replacement or refund for products not performing as stated on the datasheet
- Valid for 12 months from date of delivery
- Response to your inquiry within 24 hours
- We provide support in Chinese, English, French, German, Japanese and Spanish
- Extensive multi-media technical resources to help you
- We investigate all quality concerns to ensure our products perform to the highest standards

If the product does not perform as described on this datasheet, we will offer a refund or replacement. For full details of the Abpromise, please visit <https://www.abcam.com/abpromise> or contact our technical team.

Terms and conditions

- Guarantee only valid for products bought direct from Abcam or one of our authorized distributors