




Product datasheet

Anti-TPD52L2 antibody ab234819

★★★★★ [4 Abreviews](#) [4 Images](#)

Overview

Product name	Anti-TPD52L2 antibody
Description	Rabbit polyclonal to TPD52L2
Host species	Rabbit
Tested applications	Suitable for: WB, IHC-P, ICC/IF
Species reactivity	Reacts with: Mouse, Human Predicted to work with: Orangutan 
Immunogen	Recombinant full length protein corresponding to Human TPD52L2 aa 1 to the C-terminus. Database link: O43399  Run BLAST with  Run BLAST with
Positive control	IHC-P: Human pancreatic cancer and spleen tissues. ICC/IF: HepG2 cells. WB: Mouse spleen lysate.
General notes	<p>The Life Science industry has been in the grips of a reproducibility crisis for a number of years. Abcam is leading the way in addressing this with our range of recombinant monoclonal antibodies and knockout edited cell lines for gold-standard validation. Please check that this product meets your needs before purchasing.</p> <p>If you have any questions, special requirements or concerns, please send us an inquiry and/or contact our Support team ahead of purchase. Recommended alternatives for this product can be found below, along with publications, customer reviews and Q&As</p>

Properties

Form	Liquid
Storage instructions	Shipped at 4°C. Store at +4°C short term (1-2 weeks). Upon delivery aliquot. Store at -20°C long term. Avoid freeze / thaw cycle.
Storage buffer	pH: 7.40 Preservative: 0.03% Proclin 300 Constituents: 50% Glycerol (glycerin, glycerine), PBS
Purity	Protein G purified
Purification notes	Purity >95%.
Clonality	Polyclonal

Isotype

IgG

Applications

The Abpromise guarantee

Our **Abpromise guarantee** covers the use of ab234819 in the following tested applications.
The application notes include recommended starting dilutions; optimal dilutions/concentrations should be determined by the end user.

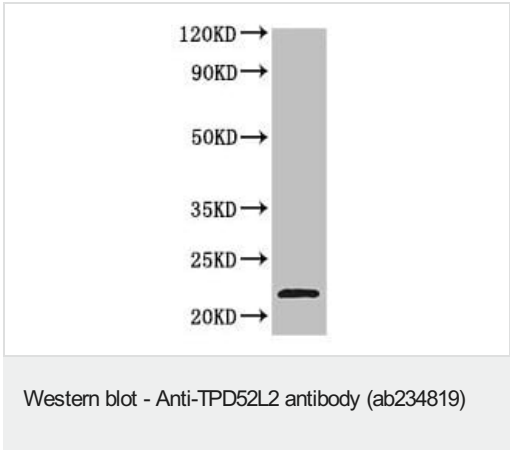
Application	Abreviews	Notes
WB	★★★★★ (2)	1/200 - 1/5000. Predicted molecular weight: 22 kDa.
IHC-P		1/20 - 1/200.
ICC/IF	★★★★★ (2)	1/50 - 1/200.

Target

Sequence similarities

Belongs to the TPD52 family.

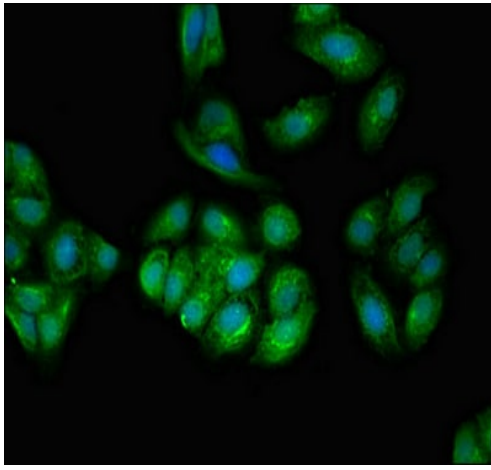
Images



Anti-TPD52L2 antibody (ab234819) at 1/200 dilution + Mouse spleen lysate

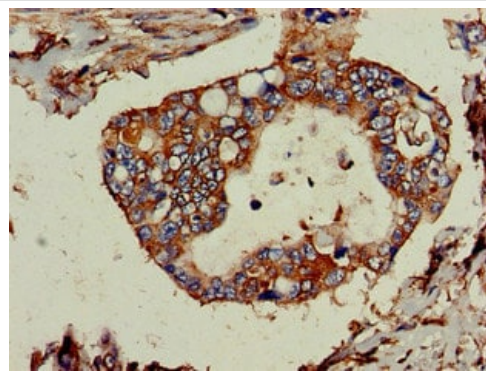
Secondary
Goat polyclonal to rabbit IgG at 1/50000 dilution

Predicted band size: 22 kDa



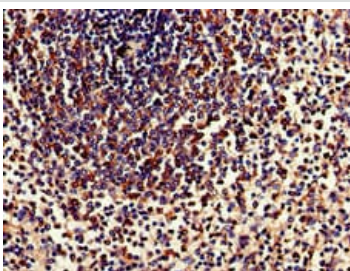
Immunocytochemistry/ Immunofluorescence - Anti-TPD52L2 antibody (ab234819)

HepG2 (human liver hepatocellular carcinoma cell line) cells stained for TPD52L2 (green) using ab234819 at 1/100 dilution in ICC/IF, followed by Alexa Fluor 488[®] conjugated Goat Anti-Rabbit IgG (H+L).



Immunohistochemistry (Formalin/PFA-fixed paraffin-embedded sections) - Anti-TPD52L2 antibody (ab234819)

Paraffin-embedded human pancreatic cancer tissue stained for TPD52L2 using ab234819 at 1/100 dilution in immunohistochemical analysis.



Immunohistochemistry (Formalin/PFA-fixed paraffin-embedded sections) - Anti-TPD52L2 antibody (ab234819)

Paraffin-embedded human spleen tissue stained for TPD52L2 using ab234819 at 1/100 dilution in immunohistochemical analysis.

Please note: All products are "FOR RESEARCH USE ONLY. NOT FOR USE IN DIAGNOSTIC PROCEDURES"

Our Abpromise to you: Quality guaranteed and expert technical support

- Replacement or refund for products not performing as stated on the datasheet
- Valid for 12 months from date of delivery
- Response to your inquiry within 24 hours
- We provide support in Chinese, English, French, German, Japanese and Spanish
- Extensive multi-media technical resources to help you
- We investigate all quality concerns to ensure our products perform to the highest standards

If the product does not perform as described on this datasheet, we will offer a refund or replacement. For full details of the Abpromise, please visit <https://www.abcam.com/abpromise> or contact our technical team.

Terms and conditions

- Guarantee only valid for products bought direct from Abcam or one of our authorized distributors