

Product datasheet

Anti-TPH2 antibody ab111828

★★★★★ [1 Abreviews](#) [13 References](#) [1 Image](#)

Overview

Product name	Anti-TPH2 antibody
Description	Rabbit polyclonal to TPH2
Host species	Rabbit
Tested applications	Suitable for: IP
Species reactivity	Reacts with: Rat
Immunogen	Synthetic peptide: RRGLSLDSAVPEDHQL , corresponding to N terminal amino acids 15-30 of Human TPH2. Run BLAST with Run BLAST with
Positive control	IP: Sprague-Dawley rat brains
General notes	<p>The Life Science industry has been in the grips of a reproducibility crisis for a number of years. Abcam is leading the way in addressing this with our range of recombinant monoclonal antibodies and knockout edited cell lines for gold-standard validation. Please check that this product meets your needs before purchasing.</p> <p>If you have any questions, special requirements or concerns, please send us an inquiry and/or contact our Support team ahead of purchase. Recommended alternatives for this product can be found below, along with publications, customer reviews and Q&As</p>

Properties

Form	Liquid
Storage instructions	Shipped at 4°C. Store at +4°C short term (1-2 weeks). Store at -20°C or -80°C. Avoid freeze / thaw cycle.
Storage buffer	Preservative: 0.1% Sodium azide Constituent: 0.1% BSA
Purity	Affinity purified
Clonality	Polyclonal
Isotype	IgG

Applications

The Abpromise guarantee

Our **Abpromise guarantee** covers the use of ab111828 in the following tested applications.

The application notes include recommended starting dilutions; optimal dilutions/concentrations should be determined by the end user.

Application	Abreviews	Notes
IP		1/1000.

Target

Tissue specificity

Brain specific.

Pathway

Aromatic compound metabolism; serotonin biosynthesis; serotonin from L-tryptophan: step 1/2.

Involvement in disease

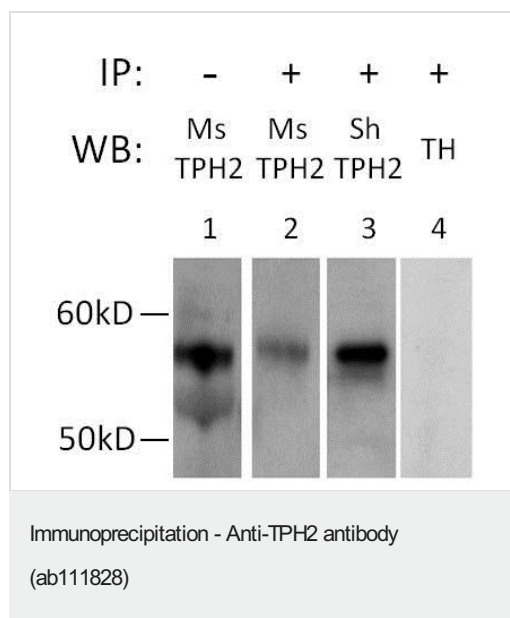
Genetic variation in TPH2 may influence susceptibility to major depressive disorder (MDD) [MIM:608516].

Defects in TPH2 are the cause of susceptibility to attention deficit-hyperactivity disorder type 7 (ADHD7) [MIM:613003]. ADHD is a neurobehavioral developmental disorder and is primarily characterized by the co-existence of attentional problems and hyperactivity, with each behavior occurring infrequently alone. Note=Naturally occurring variants of TPH2 with impaired enzyme activity could cause deficiency of serotonin production and result in an increased risk of developing behavioral disorders.

Sequence similarities

Belongs to the bipterin-dependent aromatic amino acid hydroxylase family.
Contains 1 ACT domain.

Images



Immunoprecipitation analysis of Raphe Nuclei isolated from Sprague-Dawley, precipitating ab111828 coupled to magnetic beads, which was introduced to whole cell extracts at room temperature for 15 mins. Immunoprecipitated proteins were assessed by Western blotting.

Lane 1 (Positive Control): Non-immunoprecipitated brain lysates were probed with ab111828.

Lane 2 (ab111828 Ms TPH2): Immunoprecipitated Proteins

Lane 3 (Sheep TPH2 antibody): Immunoprecipitated Proteins

Lane 4 (Negative Control => Anti-Tyrosine Hydroxylase antibody): Immunoprecipitated proteins

Please note: All products are "FOR RESEARCH USE ONLY. NOT FOR USE IN DIAGNOSTIC PROCEDURES"

Our Abpromise to you: Quality guaranteed and expert technical support

- Replacement or refund for products not performing as stated on the datasheet
- Valid for 12 months from date of delivery
- Response to your inquiry within 24 hours

- We provide support in Chinese, English, French, German, Japanese and Spanish
- Extensive multi-media technical resources to help you
- We investigate all quality concerns to ensure our products perform to the highest standards

If the product does not perform as described on this datasheet, we will offer a refund or replacement. For full details of the Abpromise, please visit <https://www.abcam.com/abpromise> or contact our technical team.

Terms and conditions

- Guarantee only valid for products bought direct from Abcam or one of our authorized distributors