



Anti-TRAIL antibody ab231063

[3 References](#) [7 Images](#)

Overview

Product name	Anti-TRAIL antibody
Description	Rabbit polyclonal to TRAIL
Host species	Rabbit
Tested applications	Suitable for: WB, IHC-P
Species reactivity	Reacts with: Rat, Human
Immunogen	Recombinant fragment corresponding to Rat TRAIL aa 100 to the C-terminus. N-terminal His-tag and GST-tag. Expressed in E. coli. Database link: Q8K3G0
	 Run BLAST with  Run BLAST with
Positive control	WB: Recombinant rat TRAIL protein. MCF7 cell lysate. IHC-P: Rat kidney, intestine, stomach, ovary and testis tissue.
General notes	<p>The Life Science industry has been in the grips of a reproducibility crisis for a number of years. Abcam is leading the way in addressing this with our range of recombinant monoclonal antibodies and knockout edited cell lines for gold-standard validation. Please check that this product meets your needs before purchasing.</p> <p>If you have any questions, special requirements or concerns, please send us an inquiry and/or contact our Support team ahead of purchase. Recommended alternatives for this product can be found below, along with publications, customer reviews and Q&As</p>

Properties

Form	Liquid
Storage instructions	Shipped at 4°C. Store at +4°C short term (1-2 weeks). Upon delivery aliquot. Store at -20°C long term. Avoid freeze / thaw cycle.
Storage buffer	pH: 7.40 Preservative: 0.011% Proclin 300 Constituents: 55.77% Glycerol (glycerin, glycerine), 44.219% PBS
Purity	Protein A purified
Purification notes	Antigen-specific affinity chromatography followed by Protein A affinity chromatography
Clonality	Polyclonal
Isotype	IgG

Applications

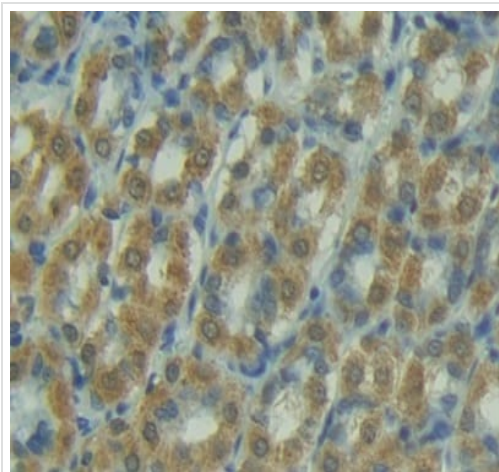
The Abpromise guarantee Our **Abpromise guarantee** covers the use of ab231063 in the following tested applications. The application notes include recommended starting dilutions; optimal dilutions/concentrations should be determined by the end user.

Application	Abreviews	Notes
WB		Use a concentration of 0.5 - 2 µg/ml.
IHC-P		Use a concentration of 5 - 20 µg/ml.

Target

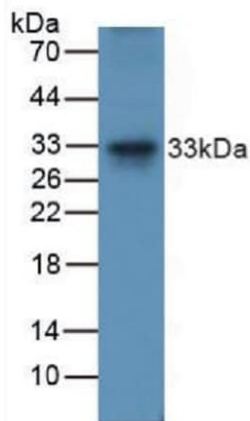
Function	Cytokine that binds to TNFRSF10A/TRAILR1, TNFRSF10B/TRAILR2, TNFRSF10C/TRAILR3, TNFRSF10D/TRAILR4 and possibly also to TNFRSF11B/OPG. Induces apoptosis. Its activity may be modulated by binding to the decoy receptors TNFRSF10C/TRAILR3, TNFRSF10D/TRAILR4 and TNFRSF11B/OPG that cannot induce apoptosis.
Tissue specificity	Widespread; most predominant in spleen, lung and prostate.
Sequence similarities	Belongs to the tumor necrosis factor family.
Cellular localization	Membrane.

Images



Formalin-fixed, paraffin-embedded rat intestine tissue stained for TRAIL with ab231063 at 20 µg/ml in immunohistochemical analysis. DAB staining.

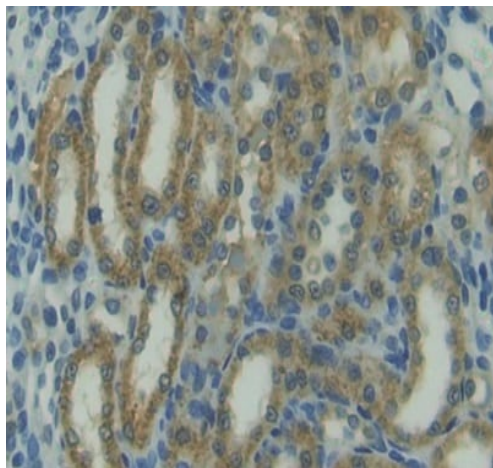
Immunohistochemistry (Formalin/PFA-fixed paraffin-embedded sections) - Anti-TRAIL antibody (ab231063)



Western blot - Anti-TRAIL antibody (ab231063)

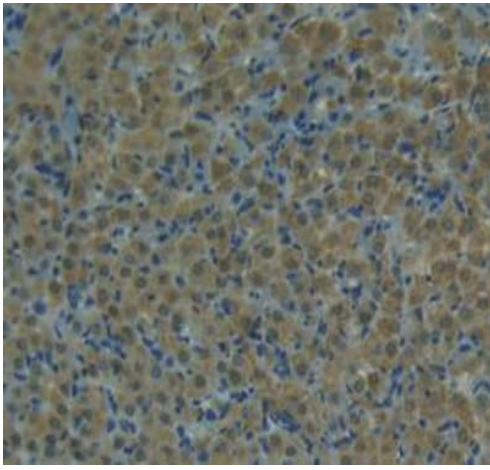
Anti-TRAIL antibody (ab231063) at 3 $\mu\text{g/ml}$ + MCF7 (Human breast adenocarcinoma cell line) cell lysate

Developed using the ECL technique.



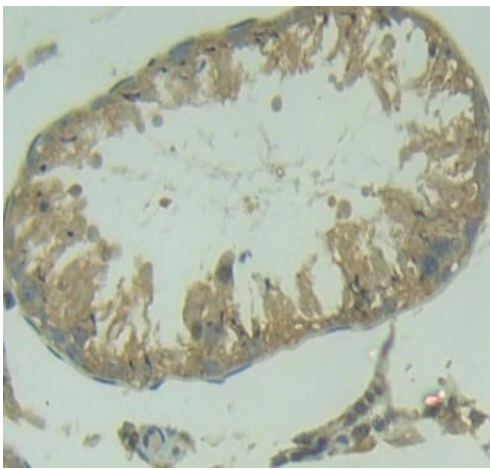
Immunohistochemistry (Formalin/PFA-fixed paraffin-embedded sections) - Anti-TRAIL antibody (ab231063)

Formalin-fixed, paraffin-embedded rat kidney tissue stained for TRAIL with ab231063 at 20 $\mu\text{g/ml}$ in immunohistochemical analysis. DAB staining.



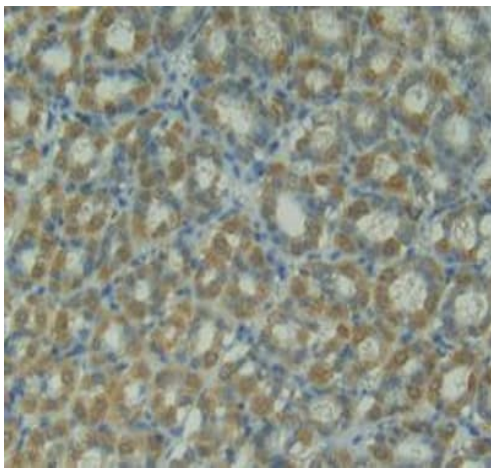
Formalin-fixed, paraffin-embedded rat ovary tissue stained for TRAIL with ab231063 at 20 µg/ml in immunohistochemical analysis. DAB staining.

Immunohistochemistry (Formalin/PFA-fixed paraffin-embedded sections) - Anti-TRAIL antibody (ab231063)



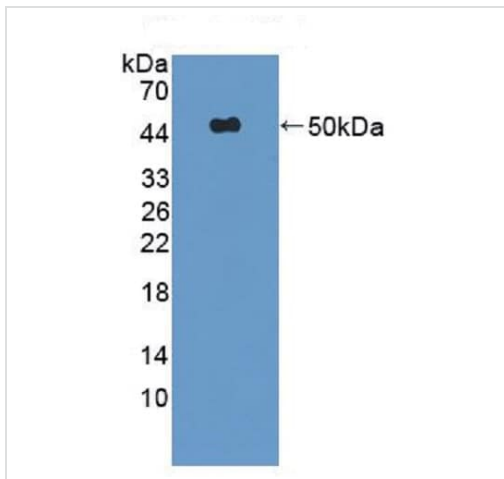
Formalin-fixed, paraffin-embedded rat testis tissue stained for TRAIL with ab231063 at 20 µg/ml in immunohistochemical analysis. DAB staining.

Immunohistochemistry (Formalin/PFA-fixed paraffin-embedded sections) - Anti-TRAIL antibody (ab231063)



Formalin-fixed, paraffin-embedded rat stomach tissue stained for TRAIL with ab231063 at 20 µg/ml in immunohistochemical analysis. DAB staining.

Immunohistochemistry (Formalin/PFA-fixed paraffin-embedded sections) - Anti-TRAIL antibody (ab231063)



Anti-TRAIL antibody (ab231063) at 2 µg/ml + recombinant rat TRAIL protein

Developed using the ECL technique.

Western blot - Anti-TRAIL antibody (ab231063)

Please note: All products are "FOR RESEARCH USE ONLY. NOT FOR USE IN DIAGNOSTIC PROCEDURES"

Our Abpromise to you: Quality guaranteed and expert technical support

- Replacement or refund for products not performing as stated on the datasheet
- Valid for 12 months from date of delivery
- Response to your inquiry within 24 hours
- We provide support in Chinese, English, French, German, Japanese and Spanish
- Extensive multi-media technical resources to help you
- We investigate all quality concerns to ensure our products perform to the highest standards

If the product does not perform as described on this datasheet, we will offer a refund or replacement. For full details of the Abpromise, please visit <https://www.abcam.com/abpromise> or contact our technical team.

Terms and conditions

- Guarantee only valid for products bought direct from Abcam or one of our authorized distributors