


Product datasheet

Anti-Transaldolase 1 antibody ab187730

[2 Images](#)

Overview

Product name	Anti-Transaldolase 1 antibody
Description	Rabbit polyclonal to Transaldolase 1
Host species	Rabbit
Tested applications	Suitable for: IP, WB
Species reactivity	Reacts with: Mouse, Human Predicted to work with: Chimpanzee, Gorilla 
Immunogen	Synthetic peptide within Human Transaldolase 1 aa 250 to the C-terminus. The exact immunogen sequence used to generate this antibody is proprietary information. If additional detail on the immunogen is needed to determine the suitability of the antibody for your needs, please contact our Scientific Support team to discuss your requirements. Database link: P37837 Run BLAST with Run BLAST with
Positive control	HeLa, Jurkat, 293, NIH 3T3 and TCMK-1 cell lysates
General notes	<p>The Life Science industry has been in the grips of a reproducibility crisis for a number of years. Abcam is leading the way in addressing this with our range of recombinant monoclonal antibodies and knockout edited cell lines for gold-standard validation. Please check that this product meets your needs before purchasing.</p> <p>If you have any questions, special requirements or concerns, please send us an inquiry and/or contact our Support team ahead of purchase. Recommended alternatives for this product can be found below, along with publications, customer reviews and Q&As</p>

Properties

Form	Liquid
Storage instructions	Shipped at 4°C. Store at +4°C short term (1-2 weeks). Upon delivery aliquot. Store at -20°C long term. Avoid freeze / thaw cycle.
Storage buffer	pH: 7 Preservative: 0.09% Sodium azide Constituent: 99% Tris citrate/phosphate pH 7 to 8

Purity	Immunogen affinity purified
Clonality	Polyclonal
Isotype	IgG

Applications

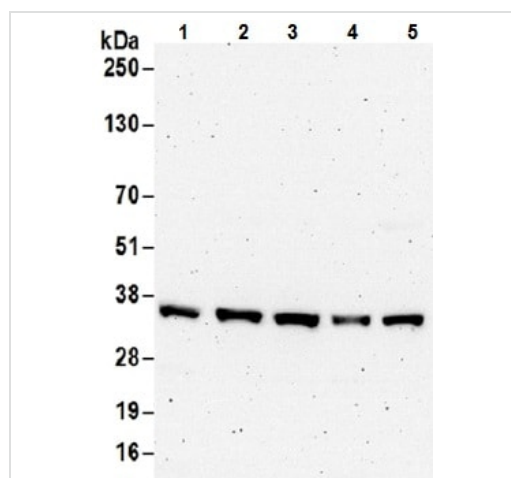
The Abpromise guarantee Our **Abpromise guarantee** covers the use of ab187730 in the following tested applications. The application notes include recommended starting dilutions; optimal dilutions/concentrations should be determined by the end user.

Application	Abreviews	Notes
IP		Use at 2-10 µg/mg of lysate.
WB		1/1000 - 1/5000. Predicted molecular weight: 37 kDa.

Target

Function	Transaldolase is important for the balance of metabolites in the pentose-phosphate pathway.
Pathway	Carbohydrate degradation; pentose phosphate pathway; D-glyceraldehyde 3-phosphate and beta-D-fructose 6-phosphate from D-ribose 5-phosphate and D-xylulose 5-phosphate (non-oxidative stage); step 2/3.
Involvement in disease	Defects in TALDO1 are the cause of transaldolase 1 deficiency (TALDO1 deficiency) [MIM:606003]. It results in telangiectases of the skin, hepatosplenomegaly, and enlarged clitoris.
Sequence similarities	Belongs to the transaldolase family. Type 1 subfamily.
Cellular localization	Cytoplasm.

Images



Western blot - Anti-Transaldolase 1 antibody (ab187730)

All lanes : Anti-Transaldolase 1 antibody (ab187730) at 0.4 µg/ml

Lane 1 : HeLa cell lysate

Lane 2 : 293T cell lysate

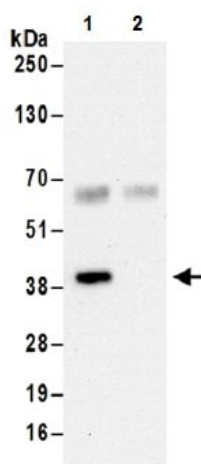
Lane 3 : Jurkat cell lysate

Lane 4 : Mouse TCMK-1 cell lysate

Lane 5 : Mouse NIH 3T3 cell lysate

Lysates/proteins at 50 µg per lane.

Predicted band size: 37 kDa



Immunoprecipitation - Anti-Transaldolase 1 antibody
(ab187730)

Immunoprecipitation of Transaldolase 1 from HeLa whole cell lysate (1 mg per lane), using ab187730 at 6 μ g (lane 1) or an IgG control (lane 2). For western blot of immunoprecipitated protein, ab187730 was used at 1 μ g/ml.

Detection: ECL with an exposure time of 30 seconds.

Please note: All products are "FOR RESEARCH USE ONLY. NOT FOR USE IN DIAGNOSTIC PROCEDURES"

Our Abpromise to you: Quality guaranteed and expert technical support

- Replacement or refund for products not performing as stated on the datasheet
- Valid for 12 months from date of delivery
- Response to your inquiry within 24 hours
- We provide support in Chinese, English, French, German, Japanese and Spanish
- Extensive multi-media technical resources to help you
- We investigate all quality concerns to ensure our products perform to the highest standards

If the product does not perform as described on this datasheet, we will offer a refund or replacement. For full details of the Abpromise, please visit <https://www.abcam.com/abpromise> or contact our technical team.

Terms and conditions

- Guarantee only valid for products bought direct from Abcam or one of our authorized distributors